



- Sealed to IP66 IP68 and IP69K when mated
- IP68 rating tested at 1.054kg/sq cm (15lb/sq in) 10m depth for 2 weeks
- 2, 3, 4, 6, 8, 10 & 12 pole configuration
- Power ratings up to 13A, 600V
- Cable range from 3 to 7mm
- Diameter over coupling ring 19.7mm
- Flex, Flex In-Line, Rear Panel and PCB mounting body styles
- Colour coded O-rings & washers for easy identification purposes
- Plug and Socket versions in all body styles
- Flame Retardant moulding material - Polyamide UL94-V0
- Contacts supplied separately (except PCB versions)
- Sealing caps available to maintain IP68 rating
- Crimp and solder contacts
- UL, CSA and VDE approvals
- EN60068-2-52 Test Kb Salt Mist (Cyclic) Marine Severity Level 1
- EN60068-2-64 Vibration Resistance

Flex Cable Connector



PXP4010

- Mates with Flex In-line or Panel mounting versions PXP4011, PXP4013
- Pin or socket
- 2, 3, 4, 6, 8, 10 & 12 pole
- ¼ turn locking ring
- Contacts supplied separately



Inline Flex Cable Connector



PXP4011

- Mates with Flex Cable connector PXP4010
- Pin or socket
- 2, 3, 4, 6, 8, 10 & 12 pole
- For in-line cable connection
- Contacts supplied separately



Rear Panel Mounting Connector
(locking nut included)



PXP4013

- Mates with Flex Cable connector PXP4010, PXP4011
- Pin or socket
- Single hole fixing
- Contacts supplied separately
- 2, 3, 4, 6, 8, 10 & 12 pole



PCB Mounting Connector
(locking nut included)



PXP4013/XXX/PC

- Mates with Flex Cable connector PXP4010, PXP4011
- Pin or socket
- PCB Rear Panel mounting
- Straight PC spills
- Supplied with pre-loaded gold plated contacts
- 2, 3, 4, 6, 8, 10 & 12 pole



Sealing Caps



PXP4081 PXP4082 PXP4083

- Maintains IP-sealed rating of unmated connectors

Part no.

PXP4081

Description

Sealing cap for use with PXP4010 & PXP4040

PXP4082

Sealing cap for use with PXP4011

PXP4083

Sealing cap for use with PXP4013 & PXP4043

Gland Packs



Part no. **Description**

PXP4088/0305 Pack of 4 pairs cable glands and collets to suit cables from 3.0 to 5.0mm diameter.

PXP4088/0507 Pack of 4 pairs cable glands and collets to suit cables from 5.0 to 7.0mm diameter.

O-ring & washer pack



Part no. **Description**

PXP4089/YL Yellow coloured O-ring and washer pack

PXP4089/BL Blue coloured O-ring and washer pack

PXP4089/RD Red coloured O-ring and washer pack

PXP4089/WH White coloured O-ring and washer pack

PXP4089/GN Green coloured O-ring and washer pack

Crimp Contacts

Pole	Current Rating	Pin Part No.	Socket Part No.	Pack Qty	Cable Acceptance (dia)
2, 3	13A /*10A	SA3350	SA3349	10	16 - 18 AWG
4, 6, 8	8A /*5A	SA3348	SA3347	10	18 - 20 AWG
10, 12	3A /*3A	SA3180	SA3179	10	22 - 24 AWG

Solder Contacts

Pole	Current Rating	Pin Part No.	Socket Part No.	Pack Qty	Cable Acceptance (dia)
2,3	13A /*10A	SA3350/1	SA3349/1	10	16 - 18 AWG
4, 6, 8	8A /*5A	SA3348/1	SA3347/1	10	18 - 20 AWG
10, 12	3A /*3A	SA3180/1	SA3179/1	10	22 - 24 AWG

Insertion / Extraction

	Poles	Contact Rating	Colour	Part No
Insertion/Extraction Tool	2, 3	13A /*10A	Blue	13027/2
Insertion/Extraction Tool	4, 6, 8	8A /*5A	Red	13027/1
Insertion/Extraction Tool	10, 12	3A /*3A	Green	13027

Crimp tools

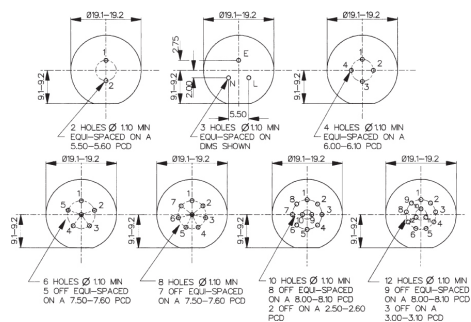
	Poles	Contact Rating	Colour	Part No
Positioner	2, 3	13A/*10A	Orange	14025/1618
Positioner	4, 6, 8	8A /*5A	Grey	14025/1820
Positioner	10, 12	3A /*3A	Yellow	14025/2224
8 Indent Crimp Tool for use with positioners				14025

*Current rating for CSA standards

PXP4013 PCB Contact Layout

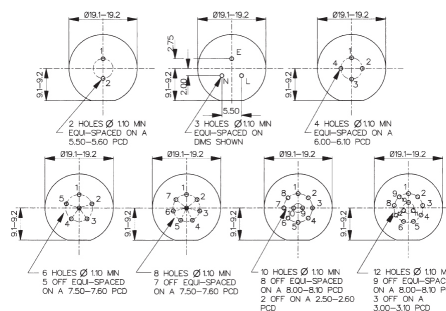
Sockets

Contact numbers viewed from rear of panel



Plugs

Contact numbers viewed from rear of panel



2 pole
(13 Amp)



3 pole
(13 Amp)



4 pole
(8 Amp)



6 pole
(8 Amp)



8 pole
(8 Amp)



10 pole
(3 Amp)






12 pole
(3 Amp)

Electrical:

No. Poles:	2 & 3	4, 6 & 8	10 & 12
Current Rating UL / VDE:	13A	8A	3A
Current Rating CSA:	10A	5A	3A
Voltage Rating:	600V AC/DC	600V AC/DC	600V AC/DC
Contact Resistance:	<5mΩ		
Insulation Resistance:	>10 ⁶ MΩ (@ 500V DC)		
AC Breakdown voltage:	2.5kV		
Cycles:	>1000		

Operating Temperature:
 Flex and panel types -40°C to +120°C

Approvals:

-  UL (Underwater Laboratories)
-  CSA (Canadian Standards Associations)
-  VDE (Verband der Elektrotechnik)

Material:

Flex and panel types:
 Body Mouldings: Polyamide
 Flammability Rating: UL94V-0
 UV Resistance: To EN 50021:1999

Contacts: Copper alloy, Gold plated

O Rings: Silicone

Panel Sealing O Ring: Silicone

RoHS Compliant

Mechanical:

Sealing: IP66 to En60529:1992+A2:2013
 IP68 to En60529:1992+A2:2013 (10m depth for 2 weeks)
 IP69k to DIN 40050-9

IP69K, Tested in accordance with DIN 40050/Part 9 IP6k9k

Salt Mist: EN60068-2-52 Test Kb Salt Mist (Cyclic) Marine Severity Level 1

Vibration: BS EN 60068-2-64:2008 Test Fh
 BS EN 60068-2-27:2009 Test Ea

Cable Acceptance: 3.0 - 7.0mm

Contact Accommodation: 2 & 3 pole, 16 - 18 AWG
 4, 6 & 8 pole, 18* - 20 AWG
 10 & 12 pole, 22 - 24 AWG

*Solid Core Wire Only

Termination: Crimp, solder and PCB

Insertion/Withdrawal Force:
 No. poles: 2 & 3 4, 6, 8 10 & 12
 Insertion Force (typ): 25N 28N 62N
 Withdrawal Force (typ): 17N 22N 29N

Panel mount (PXP4013)
 Front fixing nut: 1.0-1.1Nm (9lbf.in.)

Cable Retention force: 60N
 3.0mm dia 80N
 4.0 to 7.0mm dia

Panel thread PXP4013: 18.97x26TPI Whitworth form to BS84 med fit

Dimensions:

Overall dimensions of connectors when mated together

Flex + Flex In-Line 80mm
 Dia. over coupling ring 19.7mm

PXP40XX	XX	X	XXXX
<p>Body Styles</p> <p>PXP4010 = Flex body PXP4011 = Flex in-line body PXP4013 = Rear panel/PCB mounting body</p>	<p>Number of Poles</p> <p>02 03 04 06 08 10 12</p>	<p>Contact Type</p> <p>P = Pin, S = Socket</p>	<p>For PXP4010 and PXP4011 cable connectors - Cable Entry Size:</p> <p>3035 = 3.0 - 3.5mm (Light Grey) 3540 = 3.5 - 4.0mm (Grey) 4045 = 4.0 - 4.5mm (Green) 4550 = 4.5 - 5.0mm (Red)</p> <p>5055 = 5.0 - 5.5mm (Yellow) 5560 = 5.5 - 6.0mm (Blue) 6065 = 6.0 - 6.5mm (White) 6570 = 6.5 - 7.0mm (Black)</p> <p>Cable gland and collet supplied in colour coded pairs.</p> <p>For PXP4013 PCB/Rear Panel Mount: PC = Pre-loaded PC pins Blank = no pins supplied</p>
<p>Examples:</p> <p>PXP4010/03S/4045 = Flex cable connector, 3 socket contacts with gland and collet for cables between 4.0 and 4.5mm diameter (supplied less contacts). PXP4013/08P = Rear panel mounting connector, for 8 pin contacts (supplied less contacts). PXP4013/03P/PC = Rear panel/PCB connector, 3 pin contacts, PCB mounting (supplied with contacts loaded).</p>			

Mouser Electronics

Authorized Distributor

Click to View Pricing, Inventory, Delivery & Lifecycle Information:

Bulgin:

[PXP4010/03S/5055](#) [PXP4011/12P/3035](#) [PXP4011/08S/5560](#) [PXP4010/08P/4045](#) [PXP4013/08P](#) [PXP4089/GN](#)
[PXP4010/03P/5055](#) [PXP4011/03P/5055](#) [PXP4011/12P/5560](#) [PXP4011/12P/6065](#) [PXP4010/03P/5560](#) [PXP4013/08S](#)
[PXP4013/12S](#) [PXP4013/12S/PC](#) [PXP4010/12S/3540](#) [PXP4081](#) [PXP4010/03P/4550](#) [PXP4010/12P/4045](#)
[PXP4011/03P/3540](#) [PXP4010/12P/3540](#) [PXP4011/12P/6570](#) [PXP4010/03P/6065](#) [PXP4010/08S/6570](#)
[PXP4010/12S/4045](#) [PXP4011/03P/4550](#) [PXP4011/03P/3035](#) [PXP4011/08P/6570](#) [PXP4010/03S/6570](#) [PXP4088/0507](#)
[PXP4013/03S/PC](#) [PXP4011/08S/6065](#) [PXP4011/08P/3540](#) [PXP4011/12S/5055](#) [PXP4011/12S/6570](#)
[PXP4011/03S/5055](#) [PXP4010/12S/4550](#) [PXP4010/08P/3540](#) [PXP4010/12P/4550](#) [PXP4010/08P/5055](#)
[PXP4010/03S/3540](#) [PXP4011/03P/6065](#) [PXP4010/03P/6570](#) [PXP4011/12S/5560](#) [PXP4088/0305](#) [PXP4011/03P/4045](#)
[PXP4011/08S/3540](#) [PXP4011/08P/5560](#) [PXP4011/03S/4550](#) [PXP4011/12S/4045](#) [PXP4011/08S/4550](#)
[PXP4010/12P/6570](#) [PXP4010/08P/5560](#) [PXP4010/12P/3035](#) [PXP4011/03S/3540](#) [PXP4010/08S/3540](#)
[PXP4011/08S/3035](#) [PXP4010/08S/5560](#) [PXP4010/12S/5055](#) [PXP4010/08S/3035](#) [PXP4011/08S/4045](#)
[PXP4011/08P/6065](#) [PXP4082](#) [PXP4011/03S/4045](#) [PXP4010/03S/6065](#) [PXP4010/12S/6570](#) [PXP4010/03S/4550](#)
[PXP4010/08P/6570](#) [PXP4011/12P/3540](#) [PXP4010/03P/4045](#) [PXP4089/YL](#) [PXP4010/08S/5055](#) [PXP4011/12P/4550](#)
[PXP4011/12S/4550](#) [PXP4013/03P](#) [PXP4010/08P/4550](#) [PXP4013/03S](#) [PXP4011/03S/3035](#) [PXP4011/12S/3035](#)
[PXP4013/12P/PC](#) [PXP4011/08P/4045](#) [PXP4010/03P/3540](#) [PXP4010/03P/3035](#) [PXP4011/08S/6570](#)
[PXP4010/12S/6065](#) [PXP4013/08P/PC](#) [PXP4011/03P/5560](#) [PXP4011/08P/4550](#) [PXP4010/03S/5560](#)
[PXP4010/12S/3035](#) [PXP4011/03S/5560](#) [PXP4011/12P/4045](#) [PXP4010/12P/5560](#) [PXP4011/03P/6570](#)
[PXP4011/12S/6065](#) [PXP4013/03P/PC](#) [PXP4013/12P](#) [PXP4089/WH](#) [PXP4010/12S/5560](#) [PXP4010/08S/6065](#)
[PXP4010/12P/6065](#)