

# D-SUB STANDARD

Solder cup – Stamped contacts – For wire size AWG 20

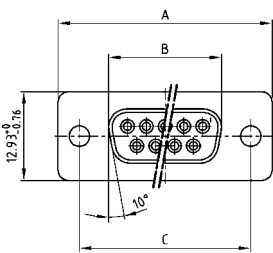


RoHS compliant – CSA listed, File No.: LR 115000-1 – UL listed, File No.: E202784

## DESCRIPTION

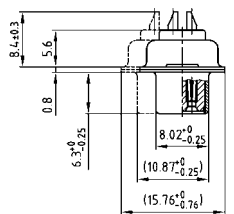
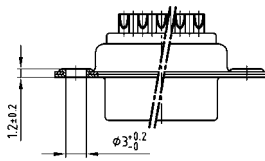
- Suitable for wire size **AWG 20**
- Mounting style:  
with through-hole, Ø .118" / 3 mm
- Quality class 3 (other quality classes on request)
- Shell: Steel tin plated

## SOCKET CONNECTOR



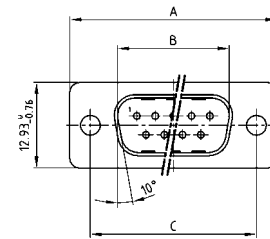
Mounting style: Through-hole

No. of pos.	A -0.76	B -0.25	C
09	31.19	16.46	25.00 +0.12
15	39.52	24.79	33.30 +0.15 -0.10
25	53.42	38.50	47.04 ±0.13
37	69.70	54.96	63.50 ±0.13
50	67.31	52.55	61.10 +0.14 -0.11



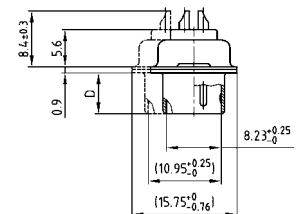
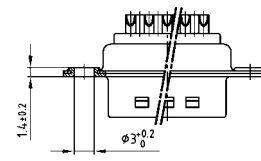
50 pos. = Dim. in ( \_ )

## PLUG CONNECTOR



Mounting style: Through-hole

No. of pos.	A -0.76	B -0.25	C	D -0.3
09	31.19	16.79	25.00 +0.12	6.12
15	39.52	25.12	33.30 +0.15 -0.10	6.12
25	53.42	38.84	47.04 ±0.13	5.99
37	69.70	55.30	63.50 ±0.13	5.99
50	67.31	52.68	61.10 +0.14 -0.11	5.99



50 pos. = Dim. in ( \_ )

## ORDER DATA

SOCKET CONNECTOR		
No. of pos.	Mounting style	Part Number
09	Through-hole	302 A 10019 X
15	Through-hole	302 A 10029 X
25	Through-hole	302 A 10059 X
37	Through-hole	302 A 10069 X
50	Through-hole	302 A 10079 X

PLUG CONNECTOR		
No. of pos.	Mounting style	Part Number
09	Through-hole	301 A 10019 X
15	Through-hole	301 A 10029 X
25	Through-hole	301 A 10059 X
37	Through-hole	301 A 10069 X
50	Through-hole	301 A 10079 X