

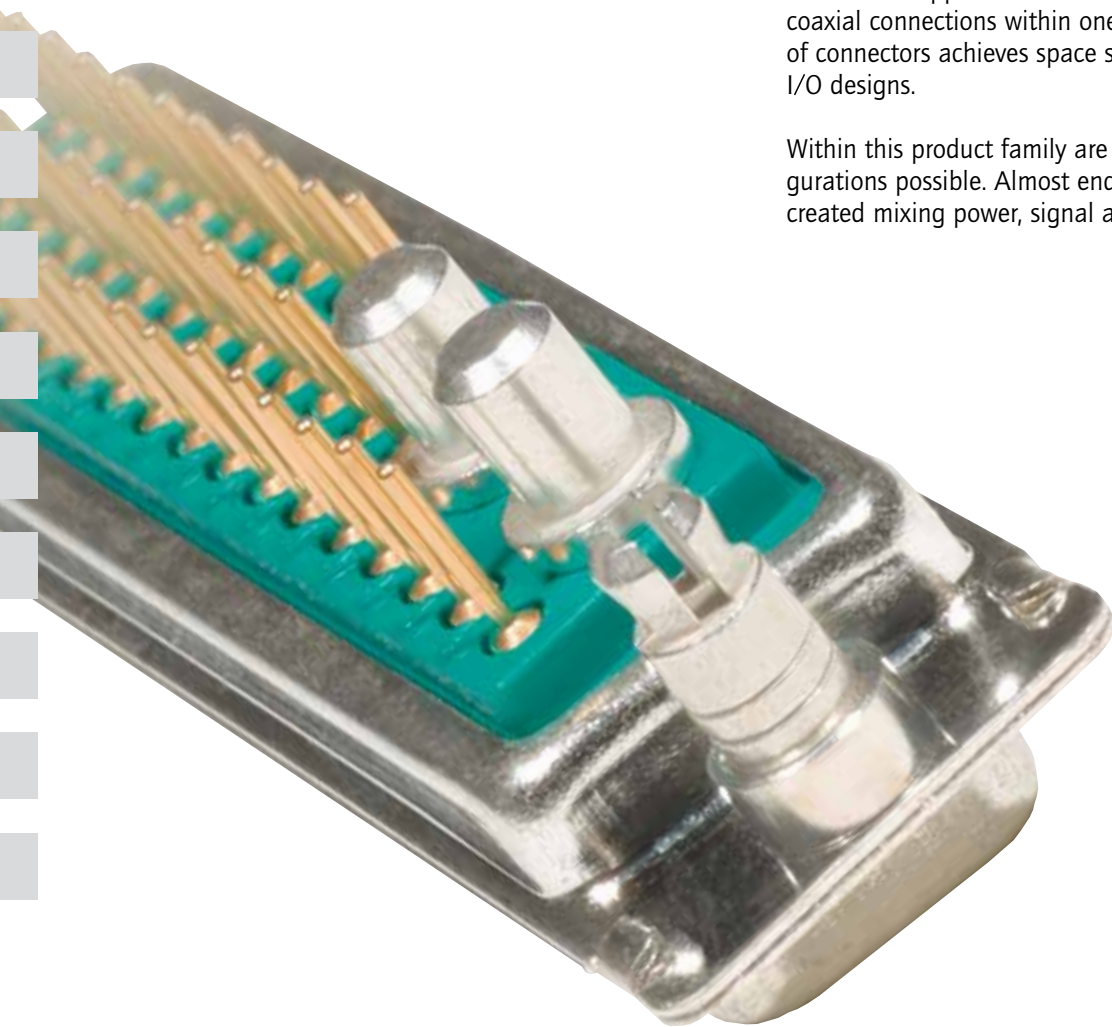
## SECTION 6

# COMBINATION D-SUB CONNECTORS

Combination D-SUB Connectors provide the ideal solution for applications to require power, signal and coaxial connections within one connector. This series of connectors achieves space saving on PCB's and I/O designs.

Within this product family are various pin out configurations possible. Almost endless selections can be created mixing power, signal and coaxial contacts.

Examples are coaxial contacts handling frequencies up to 2 GHz. Power contacts from 10 amp to 40 amp current handling. Signal contacts in various styles complete the product offering.



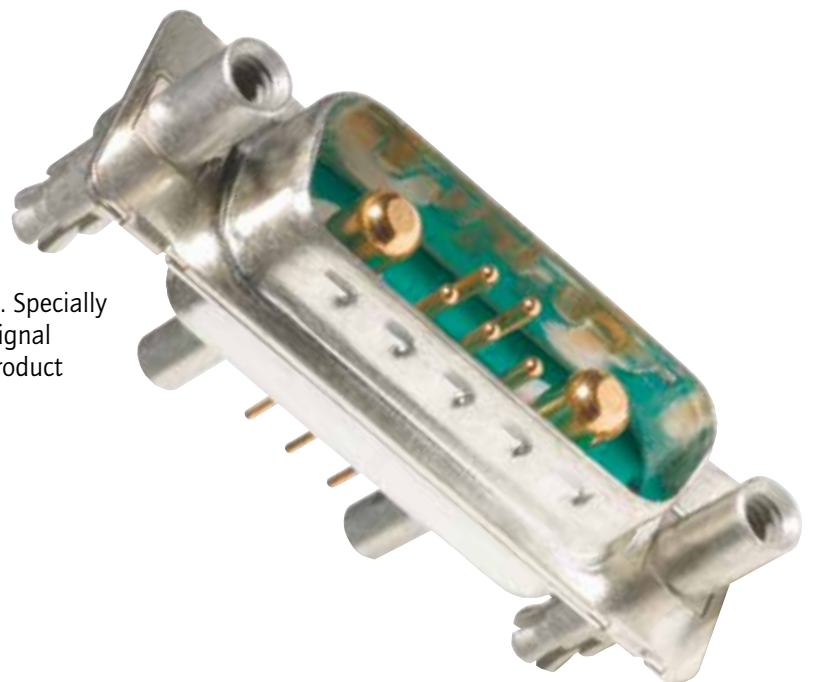


Industry standard terminations types, solder cup, PCB contacts in straight and angled pin configurations. Crimp types and wire wrap contacts.

**Here are just a few Product characteristics:**

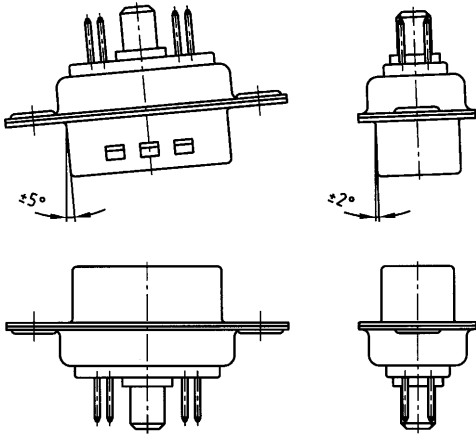
- Space savings on the PCB
- Different wire terminations are possible in a single connector
- Cost savings - mixed layout
- Insertable and removable coaxial, power, high voltage and signal contacts
- Precision machined contacts
- Various quality classes are available
- Wide product range

A wide range of standard pin configurations fully loaded with signal contacts are available. Specially configured contacts with power, coaxial and signal contacts can be constructed. Please use the product creator on page 6 | 3 or contact the factory.

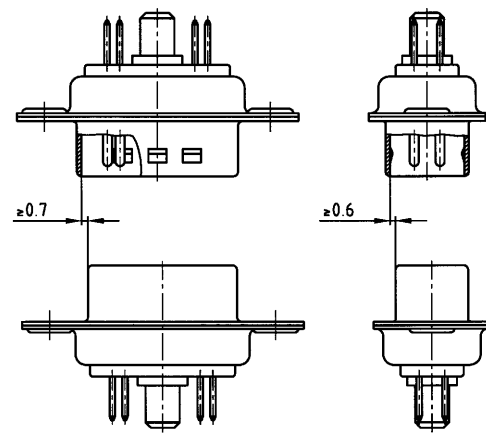


# MATING CONDITIONS

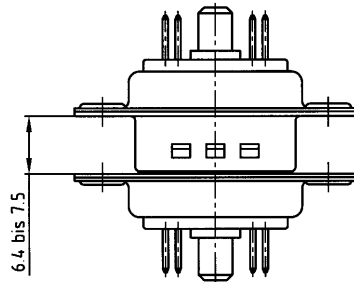
Float mount tolerance guide



Rigid mount tolerance guide

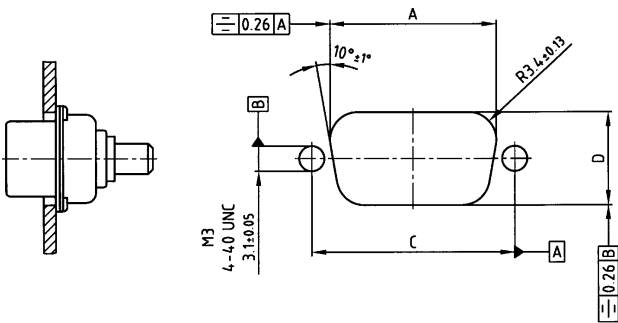


Rigid mount vertical to tolerance guide

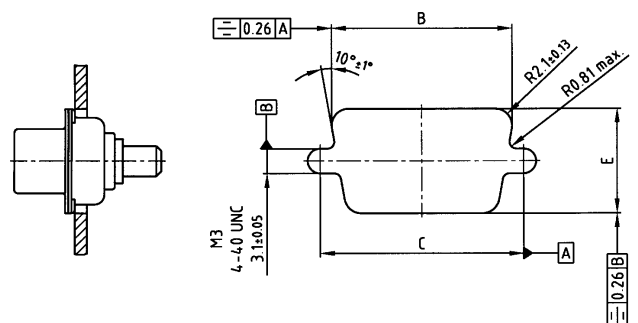


## PANEL CUT-OUT

Rear panel mounting



Front panel mounting



Shell size	A ± 0,13	B ± 0,13	C ± 0,13	D ± 0,13	E ± 0,13
1	20.50	22.20	25.00	11.40	13.00
2	28.80	30.50	33.30	11.40	13.00
3	42.50	44.30	47.04	11.40	13.00
4	59.10	60.70	63.50	11.40	13.00
5	56.30	58.30	61.10	14.10	15.80

## PART NUMBER CREATOR

3 003W3 S X X 6 1 A 1 O X

**Product Line**

3	= Shell steel tin plated	
1	= Brass tin plated*	
A	= Stainless steel*	*on request

**Shell size and design**

1	= 5W1, 2W2C	
2	= 3W3, 7W2, 11W1, 3W3C	
3	= 5W5, 9W4, 13W3, 17W2, 21W1	
4	= 8W8, 13W6, 17W5, 21WA4, 25W3, 27W2	
5	= 24W7, 36W4, 43W2, 47W1	Empty positions ADD „0“ = 003W3

**Contact type**

P	= Plug connector
S	= Socket connector

**Oberfläche/Quality class for signal contacts**

A	= Quality class 3 = 50 mating cycles
B	= Quality class 2 = 200 mating cycles
C	= Quality class 1 = 500 mating cycles
J	= Special application => 500 mating cycles (on request)
X	= Crimp and 3W3, 5W5, 8W8, 2W2C, 3W3C (no contacts are supplied with the connector)

**Termination only for signal contacts**

K	= Crimp without contacts	U	= Solder pin, angled, .370" / 9.40 mm
M	= Solder cup	W*	= Solder pin, angled, .450" / 11.43 mm
N	= Wire wrap, .500" / 12.7 mm	X	= 3W3, 5W5, 8W8, 2W2C, 3W3C
P	= Press fit	Z*	= Solder pin, angled, .540" / 13.84 mm
R	= Solder pin, straight, .220" / 5.6 mm	*	= please contact us
T	= Solder pin, angled, .280" / 7.19 mm		

**Termination for high power or coaxial contacts**

C1	= Solder/Crimp angled 10 A	75 / 58 = Solder pin, angled 40 A
C2	= Solder/Crimp angled 20 A	77 / 60 = Solder pin, angled 40 A
C3	= Solder/Crimp angled 30 A	85 / 65 = Solder pin, angled 30 A
C4	= Solder/Crimp angled 40 A	81 / 66 = Solder pin, angled 20 A
61 / 41 = Solder cup 10 A		82 / 67 = Solder pin, angled 30 A
62 / 42 = Solder cup 20 A		G7 / 76 = 3 Solder pins Straight 50 Ω
63 / 43 = Solder cup 30 A		G9 / 78 = 3 Solder pins angled 50 Ω
64 / 44 = Solder cup 40 A		H1 / 79 = 3 Solder pins angled 50 Ω
68 / 48 = Solder pin, straight 20 A, D= .077" / 1.95 mm		H4 / 80 = 5 Solder pins angled 50 Ω
69 / 49 = Solder pin, straight 20 A, D= .102" / 2.60 mm		G8 / 86 = 3 Solder pins Straight 75 Ω
70 / 50 = Solder pin, straight 20 A, D= .110" / 2.85 mm		H2 / 88 = 3 Solder pins angled 75 Ω
71 / 51 = Solder pin, straight 30 A, D= .130" / 3.18 mm		H3 / 89 = 3 Solder pins angled 75 Ω
72 / 52 = Solder pin, straight 40 A, D= .150" / 3.75 mm		H5 / 90 = 5 Solder pins angled 75 Ω
59 / 55 = Solder pin, angled 15 A		91 = Screw termination 20 A
73 / 56 = Solder pin, angled 20 A		99 = no high power, coax or crimp contacts loaded
74 / 57 = Solder pin, angled 30 A		Coaxial contacts with cable termination must be ordered separately.

**Mounting style**

A1	= Riveted	E6	= 4-40 UNC threaded rear spacer with PCB clip, PCB .126" / 3.20 mm
A2	= M3 threaded insert	F1	= M3 clip and threaded rear spacer with PCB clip, PCB .063" / 1.60 mm
A3	= 4-40 UNC threaded insert	F2	= 4-40 UNC clip and threaded rear spacer with PCB clip, PCB .063" / 1.60 mm
A4	= M3 threaded rear spacer	F3	= M3 clip and threaded rear spacer with PCB clip, PCB .091" / 2.30 mm
A5	= 4-40 UNC threaded rear spacer	F4	= 4-40 UNC clip and threaded rear spacer with PCB clip, PCB .091" / 2.30 mm
A6	= Float fastening	F5	= M3 clip and threaded rear spacer with PCB clip, PCB .126" / 3.20 mm
A7	= Threaded rear spacer for M3 press fit	F6	= 4-40 UNC clip and threaded rear spacer with PCB clip, PCB .126" / 3.20 mm
A8	= Threaded rear spacer for 4-40 UNC press fit	G1	= Metal bracket, M3 threaded insert for .370" / 9.40 mm
C1	= M3 threaded rear spacer with PCB clip, PCB .063" / 1.60 mm	G2	= Metal bracket, 4-40 UNC threaded insert for .370" / 9.40 mm
C2	= 4-40 UNC threaded rear spacer with PCB clip, PCB .063" / 1.60 mm	G3	= Metal bracket, M3 threaded insert and clip for .370" / 9.40 mm
C3	= M3 threaded rear spacer with PCB clip, PCB .091" / 2.30 mm	G4	= Metal bracket, 4-40 UNC threaded insert and clip for .370" / 9.40 mm
C4	= 4-40 UNC threaded rear spacer with PCB clip, PCB .091" / 2.30 mm	H1	= Metal bracket, M3 threaded lock for .370" / 9.40 mm
C5	= M3 threaded rear spacer with PCB clip, PCB .126" / 3.20 mm	H2	= Metal bracket, 4-40 UNC threaded lock for .370" / 9.40 mm
C6	= 4-40 UNC Threaded rear spacer with PCB clip, PCB .126" / 3.20 mm	H3	= Metal bracket, M3 threaded lock and clip for .370" / 9.40 mm
D1	= M3 clip and threaded rear spacer with PCB clip, PCB .063" / 1.60 mm	H4	= Metal bracket, 4-40 UNC threaded lock and clip for .370" / 9.40 mm
D2	= 4-40 UNC clip and threaded rear spacer with PCB clip, PCB .063" / 1.60 mm	N1	= Metal bracket, M3 threaded insert for .280" / 7.19 mm
D3	= M3 clip and threaded rear spacer with PCB clip, PCB .091" / 2.30 mm	N2	= Metal bracket, 4-40 UNC threaded insert for .280" / 7.19 mm
D4	= 4-40 UNC clip and threaded rear spacer with PCB clip, PCB .091" / 2.30 mm	N3	= Metal bracket, M3 threaded insert and clip for .280" / 7.19 mm
D5	= M3 clip and threaded rear spacer with PCB clip, PCB .126" / 3.20 mm	N4	= Metal bracket, 4-40 UNC threaded insert and clip for .280" / 7.19 mm
D6	= 4-40 UNC clip and threaded rear spacer with PCB clip, PCB .126" / 3.20 mm	P1	= Metal bracket, M3 threaded lock for .280" / 7.19 mm
E1	= M3 threaded rear spacer with PCB clip, PCB .063" / 1.60 mm	P2	= Metal bracket, 4-40 UNC threaded lock for .280" / 7.19 mm
E2	= 4-40 UNC threaded rear spacer with PCB clip, PCB .063" / 1.60 mm	P3	= Metal bracket, M3 threaded lock and clip for .280" / 7.19 mm
E3	= M3 threaded rear spacer with PCB clip, PCB .091" / 2.30 mm	P4	= Metal bracket, 4-40 UNC threaded lock and clip for .280" / 7.19 mm
E4	= 4-40 UNC threaded rear spacer with PCB clip, PCB .091" / 2.30 mm	W1	= Threaded rear spacer with M3 press in pin
E5	= M3 threaded rear spacer with PCB clip, PCB .126" / 3.20 mm	W2	= Threaded rear spacer with 4-40 UNC press in pin

OX = Standard

# TECHNICAL DATA

Materials	Connector with signal contacts	Coaxial contacts	High power contacts	High voltage contacts
Insulator Green standard / black crimp	PBTP, GV (UL94 V-0)			
Shell	steel tin plated Brass or stainless steel on request			
Contact plating	Gold plated over nickel			
Contact material	CU alloy			
PCB clip		CU alloy	CU alloy	PI
Insulator	PTFE/PBTP/PI		PTFE	
<b>Mechanical and electrical characteristics</b>				
Current rating	7.5 A (UL) / 5 A (CSA, VDE)			
Test voltage between 2 contacts contact and shell	1000 V, 50Hz 1 min.			
Resistance between mated contacts	2.7m $\Omega$			
Insulation resistance	5G $\Omega$	10 <sup>7</sup> m $\Omega$	5G $\Omega$	2x10 <sup>7</sup> m $\Omega$
Contact resistance	10 <sup>16</sup> $\Omega$ cm			
Dielectric impedance	50KV/mm			
Characteristic impedance		50/75		
Contact resistance inner/outer conductor	2.7m $\Omega$	2.7m $\Omega$	1m $\Omega$	2.7m $\Omega$
VSWR-value at according MIL-C-39012	1.2GHz 1.5GHz 2.0GHz		1.2 1.3 1.5	
Dielectric voltage		750V 50Hz		3.8kV
Frequency range		0-2GHz		
Working voltage	250 V	250 V		max. 2.8kV
Temperature range	-55°C to +125°C			
Insertion force per contact	3,4N	7N	7N	5N
Extraction force per contact	0,2N	7N	ca. 5N	ca. 2.5N
Mating cycles	A = Quality class 3 = 50 mating cycles, B = Quality class 2 = 200 mating cycles, C = Quality class 1 = 500 mating cycles			

Technical alterations are subject to change without notice.

# TECHNICAL INFORMATIONS

## SKIN EFFECT

Alternating currents do not uniformly occupy the entire cross section of the conductor, rather inductance effect in the conductor deflects the current towards the surface of the conductor, whereby this deflection increases with the frequency.

The resistive attenuation of a transmission line increases with the frequency as a result of this skin effect.

The skin depth (equivalent thickness of the layer in which current flows) can be determined using

$$\delta = \frac{1}{\sqrt{f \pi \sigma \mu_0 \mu_r}}$$

f = frequency

$\sigma$  = conductivity of the conductor material

$\sigma_{Ag} = 62 \times 10^6 \text{ S/m}$

$\sigma_{Cu} = 58 \times 10^6 \text{ S/m}$

$\mu_0 = 1,256 \cdot 10^{-6} \text{ Vs / Am}$

$\mu_r$  ... relative permeability constant for the employed material

## VSWR-VALUE

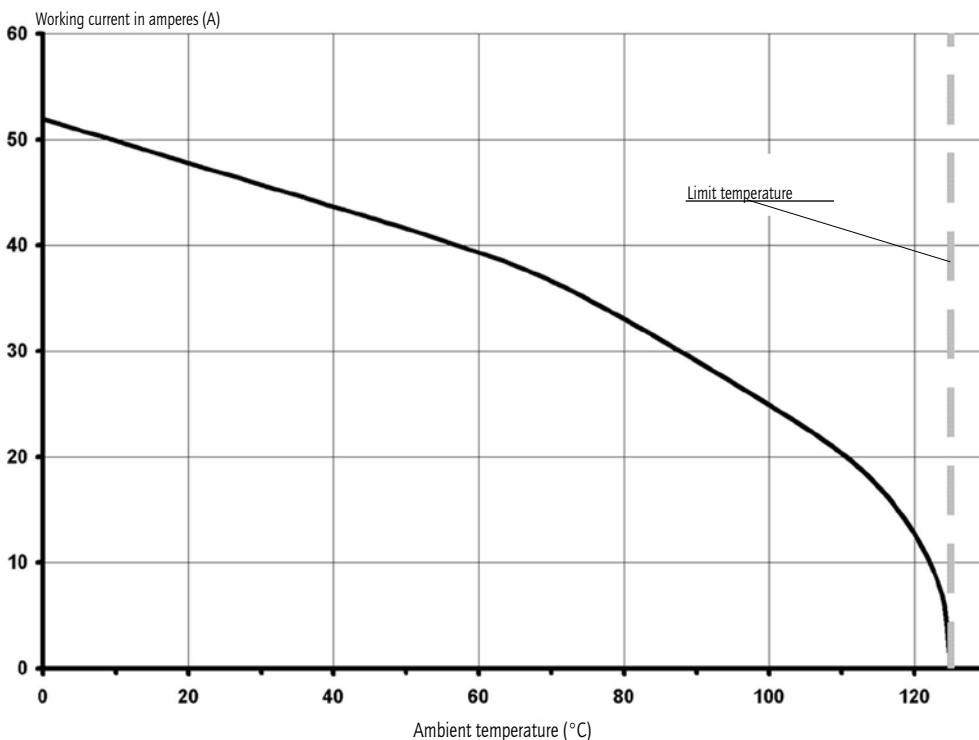
The ratio between the value of the largest and the smallest voltages on a loss-free line is known as the ripple or voltage standing wave ratio s (where  $1 \leq s < \infty$ ). The reciprocal value of the VSWR is known as the inverse voltage standing wave ratio m (where  $0 < m \leq 1$ ).

(VSWR = Voltage standing wave ratio)

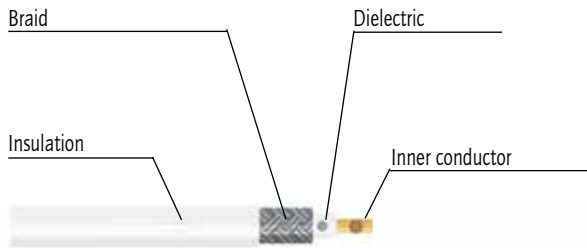
The value of s is linked with the → reflection coefficient r on s transmission line according to the equation

$$s = \frac{(1 + |r|)}{(1 - |r|)}$$

## CURRENT RATING



# CRIMPING INSTRUCTIONS FOR COAX CONTACTS



Strip the wire



Slide sleeve over coax cable



Crimp the inner contact on the inner conductor



Snap the inner contact into the outer contact



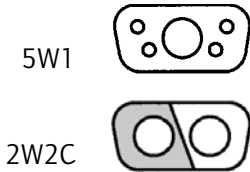
Slide braid over outer contact



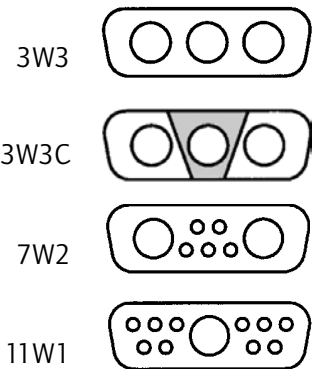
Crimp the sleeve on to outer contact

# PIN CONFIGURATION – MATING SIDE OF SOCKET CONNECTOR

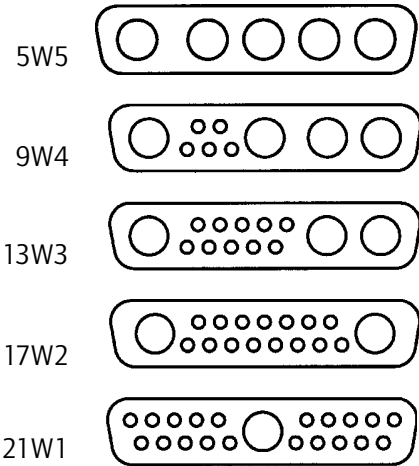
**SHELL SIZE 1**



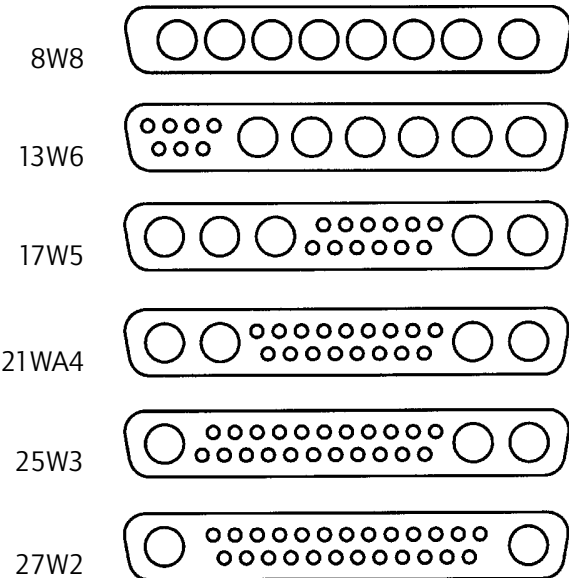
**SHELL SIZE 2**



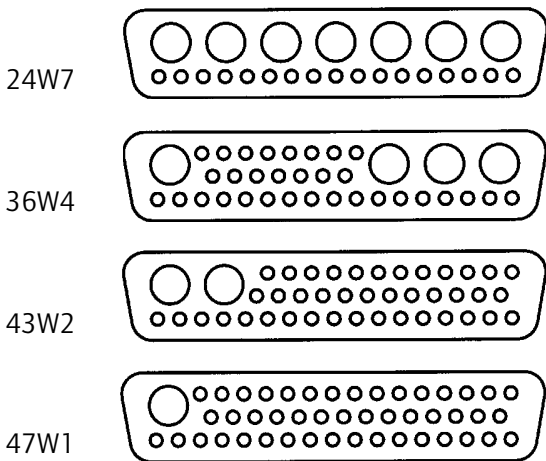
**SHELL SIZE 3**



**SHELL SIZE 4**



**SHELL SIZE 5**

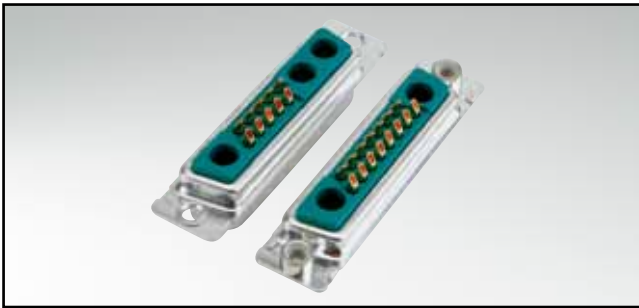


Connectors 3W3, 5W5 and 8W8 with female insulators: Socket contacts are fingerprobe safe according to UL 1950 and CSA 22.2.950.



# COMBINATION D-SUB WITH SIGNAL CONTACTS

Solder cup – Precision machined contacts – For wire size AWG 20



RoHS compliant – CSA listed, File No.: LR 115000-1 – UL listed, File No.: E 228329

## DESCRIPTION

- Suitable for wire size **AWG 20**
- Mounting styles:
  - with through-hole,  $\emptyset$  .118" / 3 mm
  - with 4-40 UNC or M3 threaded insert
  - with floating mount
- Quality class 3 (also available in quality class 1)
- Shell: Steel tin plated (brass tin plated or stainless steel available on request)

## SOCKET CONNECTOR

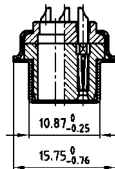


Shell size	A -0.76	B -0.25	C
1	31.19	16.46	25.00 <sup>+0.12</sup> <sub>-0.13</sub>
2	39.52	24.79	33.30 <sup>+0.15</sup> <sub>-0.10</sub>
3	53.42	38.50	47.04 <sup>+0.13</sup>
4	69.70	54.96	63.50 <sup>+0.13</sup>
5	67.31	52.55	61.10 <sup>+0.14</sup> <sub>-0.11</sub>

Shell size 1-4



Shell size 5

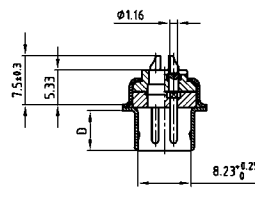


## PLUG CONNECTOR

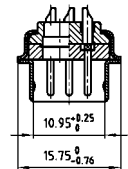


Shell size	A -0.76	B +0.25	C	D -0.30
1	31.19	16.79	25.00 <sup>+0.12</sup> <sub>-0.13</sub>	6.12
2	39.52	25.12	33.30 <sup>+0.15</sup> <sub>-0.10</sub>	6.12
3	53.42	38.84	47.04 <sup>+0.13</sup>	5.99
4	69.70	55.30	63.50 <sup>+0.13</sup>	5.99
5	67.31	52.68	61.10 <sup>+0.14</sup> <sub>-0.11</sub>	5.99

Shell size 1-4



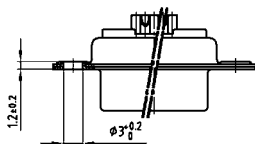
Shell size 5



## ORDER DATA

SOCKET CONNECTOR		
Design	Mounting style	Part Number
5W1	Through-hole	3 005W1SAM99A10 X
7W2	Through-hole	3 007W2SAM99A10 X
11W1	Through-hole	3 011W1SAM99A10 X
9W4	Through-hole	3 009W4SAM99A10 X
13W3	Through-hole	3 013W3SAM99A10 X
17W2	Through-hole	3 017W2SAM99A10 X
21W1	Through-hole	3 021W1SAM99A10 X
13W6	Through-hole	3 013W6SAM99A10 X
17W5	Through-hole	3 017W5SAM99A10 X
21WA4	Through-hole	3 21WA4SAM99A10 X
25W3	Through-hole	3 025W3SAM99A10 X
27W2	Through-hole	3 027W2SAM99A10 X
24W7	Through-hole	3 024W7SAM99A10 X
36W4	Through-hole	3 036W4SAM99A10 X
43W2	Through-hole	3 043W2SAM99A10 X
47W1	Through-hole	3 047W1SAM99A10 X

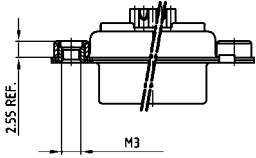
PLUG CONNECTOR		
Design	Mounting style	Part Number
5W1	Through-hole	3 005W1PAM99A10 X
7W2	Through-hole	3 007W2PAM99A10 X
11W1	Through-hole	3 011W1PAM99A10 X
9W4	Through-hole	3 009W4PAM99A10 X
13W3	Through-hole	3 013W3PAM99A10 X
17W2	Through-hole	3 017W2PAM99A10 X
21W1	Through-hole	3 021W1PAM99A10 X
13W6	Through-hole	3 013W6PAM99A10 X
17W5	Through-hole	3 017W5PAM99A10 X
21WA4	Through-hole	3 21WA4PAM99A10 X
25W3	Through-hole	3 025W3PAM99A10 X
27W2	Through-hole	3 027W2PAM99A10 X
24W7	Through-hole	3 024W7PAM99A10 X
36W4	Through-hole	3 036W4PAM99A10 X
43W2	Through-hole	3 043W2PAM99A10 X
47W1	Through-hole	3 047W1PAM99A10 X



# COMBINATION D-SUB – MOUNTING STYLES

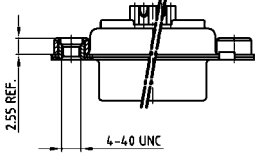
Solder cup – Precision machined contacts – For wire size AWG 20

ORDER DATA



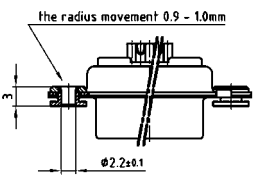
SOCKET CONNECTOR		
Design	Mounting style M3	Part Number
5W1	Threaded insert	3 005W1SAM99A20 X
7W2	Threaded insert	3 007W2SAM99A20 X
11W1	Threaded insert	3 011W1SAM99A20 X
9W4	Threaded insert	3 009W4SAM99A20 X
13W3	Threaded insert	3 013W3SAM99A20 X
17W2	Threaded insert	3 017W2SAM99A20 X
21W1	Threaded insert	3 021W1SAM99A20 X
13W6	Threaded insert	3 013W6SAM99A20 X
17W5	Threaded insert	3 017W5SAM99A20 X
21WA4	Threaded insert	3 21WA4SAM99A20 X
25W3	Threaded insert	3 025W3SAM99A20 X
27W2	Threaded insert	3 027W2SAM99A20 X
24W7	Threaded insert	3 024W7SAM99A20 X
36W4	Threaded insert	3 036W4SAM99A20 X
43W2	Threaded insert	3 043W2SAM99A20 X
47W1	Threaded insert	3 047W1SAM99A20 X

PLUG CONNECTOR		
Design	Mounting style M3	Part Number
5W1	Threaded insert	3 005W1PAM99A20 X
7W2	Threaded insert	3 007W2PAM99A20 X
11W1	Threaded insert	3 011W1PAM99A20 X
9W4	Threaded insert	3 009W4PAM99A20 X
13W3	Threaded insert	3 013W3PAM99A20 X
17W2	Threaded insert	3 017W2PAM99A20 X
21W1	Threaded insert	3 021W1PAM99A20 X
13W6	Threaded insert	3 013W6PAM99A20 X
17W5	Threaded insert	3 017W5PAM99A20 X
21WA4	Threaded insert	3 21WA4PAM99A20 X
25W3	Threaded insert	3 025W3PAM99A20 X
27W2	Threaded insert	3 027W2PAM99A20 X
24W7	Threaded insert	3 024W7PAM99A20 X
36W4	Threaded insert	3 036W4PAM99A20 X
43W2	Threaded insert	3 043W2PAM99A20 X
47W1	Threaded insert	3 047W1PAM99A20 X



SOCKET CONNECTOR		
Design	Mounting style 4-40 UNC	Part Number
5W1	Threaded insert	3 005W1SAM99A30 X
7W2	Threaded insert	3 007W2SAM99A30 X
11W1	Threaded insert	3 011W1SAM99A30 X
9W4	Threaded insert	3 009W4SAM99A30 X
13W3	Threaded insert	3 013W3SAM99A30 X
17W2	Threaded insert	3 017W2SAM99A30 X
21W1	Threaded insert	3 021W1SAM99A30 X
13W6	Threaded insert	3 013W6SAM99A30 X
17W5	Threaded insert	3 017W5SAM99A30 X
21WA4	Threaded insert	3 21WA4SAM99A30 X
25W3	Threaded insert	3 025W3SAM99A30 X
27W2	Threaded insert	3 027W2SAM99A30 X
24W7	Threaded insert	3 024W7SAM99A30 X
36W4	Threaded insert	3 036W4SAM99A30 X
43W2	Threaded insert	3 043W2SAM99A30 X
47W1	Threaded insert	3 047W1SAM99A30 X

PLUG CONNECTOR		
Design	Mounting style 4-40 UNC	Part Number
5W1	Threaded insert	3 005W1PAM99A30 X
7W2	Threaded insert	3 007W2PAM99A30 X
11W1	Threaded insert	3 011W1PAM99A30 X
9W4	Threaded insert	3 009W4PAM99A30 X
13W3	Threaded insert	3 013W3PAM99A30 X
17W2	Threaded insert	3 017W2PAM99A30 X
21W1	Threaded insert	3 021W1PAM99A30 X
13W6	Threaded insert	3 013W6PAM99A30 X
17W5	Threaded insert	3 017W5PAM99A30 X
21WA4	Threaded insert	3 21WA4PAM99A30 X
25W3	Threaded insert	3 025W3PAM99A30 X
27W2	Threaded insert	3 027W2PAM99A30 X
24W7	Threaded insert	3 024W7PAM99A30 X
36W4	Threaded insert	3 036W4PAM99A30 X
43W2	Threaded insert	3 043W2PAM99A30 X
47W1	Threaded insert	3 047W1PAM99A30 X



SOCKET CONNECTOR		
Design	Mounting style	Part Number
5W1	Floating mount	3 005W1SAM99A60 X
7W2	Floating mount	3 007W2SAM99A60 X
11W1	Floating mount	3 011W1SAM99A60 X
9W4	Floating mount	3 009W4SAM99A60 X
13W3	Floating mount	3 013W3SAM99A60 X
17W2	Floating mount	3 017W2SAM99A60 X
21W1	Floating mount	3 021W1SAM99A60 X
13W6	Floating mount	3 013W6SAM99A60 X
17W5	Floating mount	3 017W5SAM99A60 X
21WA4	Floating mount	3 21WA4SAM99A60 X
25W3	Floating mount	3 025W3SAM99A60 X
27W2	Floating mount	3 027W2SAM99A60 X
24W7	Floating mount	3 024W7SAM99A60 X
36W4	Floating mount	3 036W4SAM99A60 X
43W2	Floating mount	3 043W2SAM99A60 X
47W1	Floating mount	3 047W1SAM99A60 X

PLUG CONNECTOR		
Design	Mounting style	Part Number
5W1	Floating mount	3 005W1PAM99A60 X
7W2	Floating mount	3 007W2PAM99A60 X
11W1	Floating mount	3 011W1PAM99A60 X
9W4	Floating mount	3 009W4PAM99A60 X
13W3	Floating mount	3 013W3PAM99A60 X
17W2	Floating mount	3 017W2PAM99A60 X
21W1	Floating mount	3 021W1PAM99A60 X
13W6	Floating mount	3 013W6PAM99A60 X
17W5	Floating mount	3 017W5PAM99A60 X
21WA4	Floating mount	3 21WA4PAM99A60 X
25W3	Floating mount	3 025W3PAM99A60 X
27W2	Floating mount	3 027W2PAM99A60 X
24W7	Floating mount	3 024W7PAM99A60 X
36W4	Floating mount	3 036W4PAM99A60 X
43W2	Floating mount	3 043W2PAM99A60 X
47W1	Floating mount	3 047W1PAM99A60 X

# COMBINATION D-SUB WITH SIGNAL CONTACTS

Solder pin – Straight – Precision machined contacts

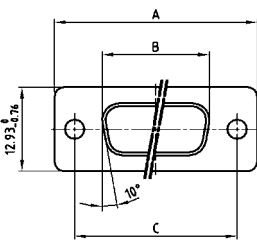


RoHS compliant – CSA listed, File No.: LR 115000-1 – UL listed, File No.: E 228329

## DESCRIPTION

- Mounting styles:
  - with through-hole,  $\varnothing$  .118" / 3 mm
  - with 4-40 UNC or M3 threaded insert
  - with 4-40 UNC or M3 threaded rear spacer
- Quality class 3 (also available in quality class 1)
- Shell: Steel tin plated (brass tin plated or stainless steel available on request)

## SOCKET CONNECTOR

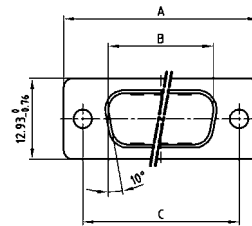


Shell size	A -0.76	B -0.25	C
1	31.19	16.46	25.00 <sup>+0.12</sup> / <sub>-0.13</sub>
2	39.52	24.79	33.30 <sup>+0.15</sup> / <sub>-0.10</sub>
3	53.42	38.50	47.04 <sup>+0.13</sup>
4	69.70	54.96	63.50 <sup>+0.13</sup>
5	67.31	52.55	61.10 <sup>+0.14</sup> / <sub>-0.11</sub>

Shell size 1-4

Shell size 5

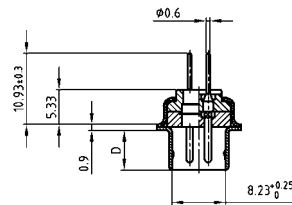
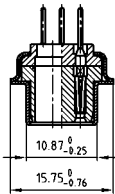
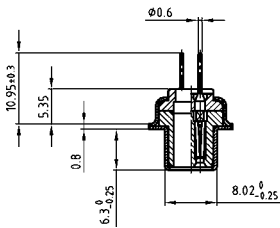
## PLUG CONNECTOR



Shell size	A -0.76	B -0.25	C	D -0.30
1	31.19	16.79	25.00 <sup>+0.12</sup> / <sub>-0.13</sub>	6.12
2	39.52	25.12	33.30 <sup>+0.15</sup> / <sub>-0.10</sub>	6.12
3	53.42	38.84	47.04 <sup>+0.13</sup>	5.99
4	69.70	55.30	63.50 <sup>+0.13</sup>	5.99
5	67.31	52.68	61.10 <sup>+0.14</sup> / <sub>-0.11</sub>	5.99

Shell size 1-4

Shell size 5



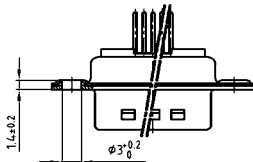
## ORDER DATA

### SOCKET CONNECTOR

Design	Mounting style	Part Number
5W1	Through-hole	3 005W1SAR99A10 X
7W2	Through-hole	3 007W2SAR99A10 X
11W1	Through-hole	3 011W1SAR99A10 X
9W4	Through-hole	3 009W4SAR99A10 X
13W3	Through-hole	3 013W3SAR99A10 X
17W2	Through-hole	3 017W2SAR99A10 X
21W1	Through-hole	3 021W1SAR99A10 X
13W6	Through-hole	3 013W6SAR99A10 X
17W5	Through-hole	3 017W5SAR99A10 X
21WA4	Through-hole	3 21WA4SAR99A10 X
25W3	Through-hole	3 025W3SAR99A10 X
27W2	Through-hole	3 027W2SAR99A10 X
24W7	Through-hole	3 024W7SAR99A10 X
36W4	Through-hole	3 036W4SAR99A10 X
43W2	Through-hole	3 043W2SAR99A10 X
47W1	Through-hole	3 047W1SAR99A10 X

### PLUG CONNECTOR

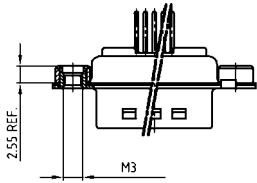
Design	Mounting style	Part Number
5W1	Through-hole	3 005W1PAR99A10 X
7W2	Through-hole	3 007W2PAR99A10 X
11W1	Through-hole	3 011W1PAR99A10 X
9W4	Through-hole	3 009W4PAR99A10 X
13W3	Through-hole	3 013W3PAR99A10 X
17W2	Through-hole	3 017W2PAR99A10 X
21W1	Through-hole	3 021W1PAR99A10 X
13W6	Through-hole	3 013W6PAR99A10 X
17W5	Through-hole	3 017W5PAR99A10 X
21WA4	Through-hole	3 21WA4PAR99A10 X
25W3	Through-hole	3 025W3PAR99A10 X
27W2	Through-hole	3 027W2PAR99A10 X
24W7	Through-hole	3 024W7PAR99A10 X
36W4	Through-hole	3 036W4PAR99A10 X
43W2	Through-hole	3 043W2PAR99A10 X
47W1	Through-hole	3 047W1PAR99A10 X



# COMBINATION D-SUB – MOUNTING STYLES

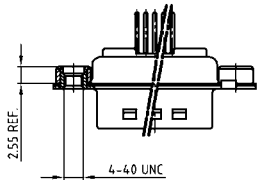
Solder pin – Straight – Precision machined contacts

ORDER DATA



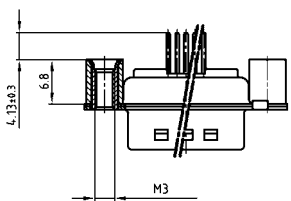
SOCKET CONNECTOR		
Design	Mounting style M3	Part Number
5W1	Threaded insert	3 005W1SAR99A20 X
7W2	Threaded insert	3 007W2SAR99A20 X
11W1	Threaded insert	3 011W1SAR99A20 X
9W4	Threaded insert	3 009W4SAR99A20 X
13W3	Threaded insert	3 013W3SAR99A20 X
17W2	Threaded insert	3 017W2SAR99A20 X
21W1	Threaded insert	3 021W1SAR99A20 X
13W6	Threaded insert	3 013W6SAR99A20 X
17W5	Threaded insert	3 017W5SAR99A20 X
21WA4	Threaded insert	3 21WA4SAR99A20 X
25W3	Threaded insert	3 025W3SAR99A20 X
27W2	Threaded insert	3 027W2SAR99A20 X
24W7	Threaded insert	3 024W7SAR99A20 X
36W4	Threaded insert	3 036W4SAR99A20 X
43W2	Threaded insert	3 043W2SAR99A20 X
47W1	Threaded insert	3 047W1SAR99A20 X

PLUG CONNECTOR		
Design	Mounting style M3	Part Number
5W1	Threaded insert	3 005W1PAR99A20 X
7W2	Threaded insert	3 007W2PAR99A20 X
11W1	Threaded insert	3 011W1PAR99A20 X
9W4	Threaded insert	3 009W4PAR99A20 X
13W3	Threaded insert	3 013W3PAR99A20 X
17W2	Threaded insert	3 017W2PAR99A20 X
21W1	Threaded insert	3 021W1PAR99A20 X
13W6	Threaded insert	3 013W6PAR99A20 X
17W5	Threaded insert	3 017W5PAR99A20 X
21WA4	Threaded insert	3 21WA4PAR99A20 X
25W3	Threaded insert	3 025W3PAR99A20 X
27W2	Threaded insert	3 027W2PAR99A20 X
24W7	Threaded insert	3 024W7PAR99A20 X
36W4	Threaded insert	3 036W4PAR99A20 X
43W2	Threaded insert	3 043W2PAR99A20 X
47W1	Threaded insert	3 047W1PAR99A20 X



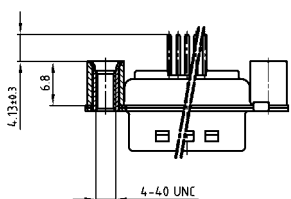
SOCKET CONNECTOR		
Design	Mounting style 4-40 UNC	Part Number
5W1	Threaded insert	3 005W1SAR99A30 X
7W2	Threaded insert	3 007W2SAR99A30 X
11W1	Threaded insert	3 011W1SAR99A30 X
9W4	Threaded insert	3 009W4SAR99A30 X
13W3	Threaded insert	3 013W3SAR99A30 X
17W2	Threaded insert	3 017W2SAR99A30 X
21W1	Threaded insert	3 021W1SAR99A30 X
13W6	Threaded insert	3 013W6SAR99A30 X
17W5	Threaded insert	3 017W5SAR99A30 X
21WA4	Threaded insert	3 21WA4SAR99A30 X
25W3	Threaded insert	3 025W3SAR99A30 X
27W2	Threaded insert	3 027W2SAR99A30 X
24W7	Threaded insert	3 024W7SAR99A30 X
36W4	Threaded insert	3 036W4SAR99A30 X
43W2	Threaded insert	3 043W2SAR99A30 X
47W1	Threaded insert	3 047W1SAR99A30 X

PLUG CONNECTOR		
Design	Mounting style 4-40 UNC	Part Number
5W1	Threaded insert	3 005W1PAR99A30 X
7W2	Threaded insert	3 007W2PAR99A30 X
11W1	Threaded insert	3 011W1PAR99A30 X
9W4	Threaded insert	3 009W4PAR99A30 X
13W3	Threaded insert	3 013W3PAR99A30 X
17W2	Threaded insert	3 017W2PAR99A30 X
21W1	Threaded insert	3 021W1PAR99A30 X
13W6	Threaded insert	3 013W6PAR99A30 X
17W5	Threaded insert	3 017W5PAR99A30 X
21WA4	Threaded insert	3 21WA4PAR99A30 X
25W3	Threaded insert	3 025W3PAR99A30 X
27W2	Threaded insert	3 027W2PAR99A30 X
24W7	Threaded insert	3 024W7PAR99A30 X
36W4	Threaded insert	3 036W4PAR99A30 X
43W2	Threaded insert	3 043W2PAR99A30 X
47W1	Threaded insert	3 047W1PAR99A30 X



SOCKET CONNECTOR		
Design	Mounting style M3	Part Number
5W1	Threaded rear spacer	3 005W1SAR99A40 X
7W2	Threaded rear spacer	3 007W2SAR99A40 X
11W1	Threaded rear spacer	3 011W1SAR99A40 X
9W4	Threaded rear spacer	3 009W4SAR99A40 X
13W3	Threaded rear spacer	3 013W3SAR99A40 X
17W2	Threaded rear spacer	3 017W2SAR99A40 X
21W1	Threaded rear spacer	3 021W1SAR99A40 X
13W6	Threaded rear spacer	3 013W6SAR99A40 X
17W5	Threaded rear spacer	3 017W5SAR99A40 X
21WA4	Threaded rear spacer	3 21WA4SAR99A40 X
25W3	Threaded rear spacer	3 025W3SAR99A40 X
27W2	Threaded rear spacer	3 027W2SAR99A40 X
24W7	Threaded rear spacer	3 024W7SAR99A40 X
36W4	Threaded rear spacer	3 036W4SAR99A40 X
43W2	Threaded rear spacer	3 043W2SAR99A40 X
47W1	Threaded rear spacer	3 047W1SAR99A40 X

PLUG CONNECTOR		
Design	Mounting style M3	Part Number
5W1	Threaded rear spacer	3 005W1PAR99A40 X
7W2	Threaded rear spacer	3 007W2PAR99A40 X
11W1	Threaded rear spacer	3 011W1PAR99A40 X
9W4	Threaded rear spacer	3 009W4PAR99A40 X
13W3	Threaded rear spacer	3 013W3PAR99A40 X
17W2	Threaded rear spacer	3 017W2PAR99A40 X
21W1	Threaded rear spacer	3 021W1PAR99A40 X
13W6	Threaded rear spacer	3 013W6PAR99A40 X
17W5	Threaded rear spacer	3 017W5PAR99A40 X
21WA4	Threaded rear spacer	3 21WA4PAR99A40 X
25W3	Threaded rear spacer	3 025W3PAR99A40 X
27W2	Threaded rear spacer	3 027W2PAR99A40 X
24W7	Threaded rear spacer	3 024W7PAR99A40 X
36W4	Threaded rear spacer	3 036W4PAR99A40 X
43W2	Threaded rear spacer	3 043W2PAR99A40 X
47W1	Threaded rear spacer	3 047W1PAR99A40 X



SOCKET CONNECTOR		
Design	Mounting style 4-40 UNC	Part Number
5W1	Threaded rear spacer	3 005W1SAR99A50 X
7W2	Threaded rear spacer	3 007W2SAR99A50 X
11W1	Threaded rear spacer	3 011W1SAR99A50 X
9W4	Threaded rear spacer	3 009W4SAR99A50 X
13W3	Threaded rear spacer	3 013W3SAR99A50 X
17W2	Threaded rear spacer	3 017W2SAR99A50 X
21W1	Threaded rear spacer	3 021W1SAR99A50 X
13W6	Threaded rear spacer	3 013W6SAR99A50 X
17W5	Threaded rear spacer	3 017W5SAR99A50 X
21WA4	Threaded rear spacer	3 21WA4SAR99A50 X
25W3	Threaded rear spacer	3 025W3SAR99A50 X
27W2	Threaded rear spacer	3 027W2SAR99A50 X
24W7	Threaded rear spacer	3 024W7SAR99A50 X
36W4	Threaded rear spacer	3 036W4SAR99A50 X
43W2	Threaded rear spacer	3 043W2SAR99A50 X
47W1	Threaded rear spacer	3 047W1SAR99A50 X

PLUG CONNECTOR		
Design	Mounting style 4-40 UNC	Part Number
5W1	Threaded rear spacer	3 005W1PAR99A50 X
7W2	Threaded rear spacer	3 007W2PAR99A50 X
11W1	Threaded rear spacer	3 011W1PAR99A50 X
9W4	Threaded rear spacer	3 009W4PAR99A50 X
13W3	Threaded rear spacer	3 013W3PAR99A50 X
17W2	Threaded rear spacer	3 017W2PAR99A50 X
21W1	Threaded rear spacer	3 021W1PAR99A50 X
13W6	Threaded rear spacer	3 013W6PAR99A50 X
17W5	Threaded rear spacer	3 017W5PAR99A50 X
21WA4	Threaded rear spacer	3 21WA4PAR99A50 X
25W3	Threaded rear spacer	3 025W3PAR99A50 X
27W2	Threaded rear spacer	3 027W2PAR99A50 X
24W7	Threaded rear spacer	3 024W7PAR99A50 X
36W4	Threaded rear spacer	3 036W4PAR99A50 X
43W2	Threaded rear spacer	3 043W2PAR99A50 X
47W1	Threaded rear spacer	3 047W1PAR99A50 X

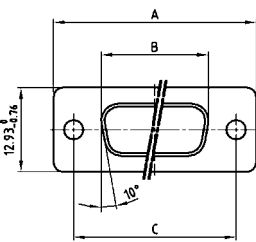
# COMBINATION D-SUB WITH SIGNAL CONTACTS

Solder pin – Straight – Precision machined contacts



RoHS compliant – CSA listed, File No.: LR 115000-1 – UL listed, File No.: E 228329

## SOCKET CONNECTOR



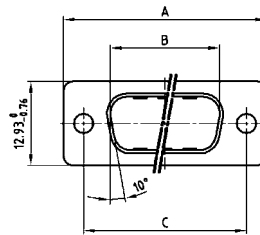
Shell size	A -0.76	B -0.25	C
1	31.19	16.46	25.00 <sup>+0.12</sup> / <sub>-0.13</sub>
2	39.52	24.79	33.30 <sup>+0.15</sup> / <sub>-0.10</sub>
3	53.42	38.50	47.04 <sup>+0.13</sup> / <sub>-0.11</sub>
4	69.70	54.96	63.50 <sup>+0.13</sup> / <sub>-0.11</sub>
5	67.31	52.55	61.10 <sup>+0.14</sup> / <sub>-0.11</sub>

Shell size 1-4

## DESCRIPTION

- Threaded rear spacer .291" / 7.4 mm  
(the same installation high as D-SUB Standard on PCB)
- Mounting styles:
  - with 4-40 UNC threaded rear spacer with PCB clip (M3 on request)
  - with 4-40 UNC front and threaded rear spacer with PCB clip (M3 on request)  
for PCB thickness .063" / 1.6 mm  
for PCB thickness .091" / 2.3 mm
- Quality class 3 (also available in quality class 1)
- Shell: Steel tin plated (brass tin plated or stainless steel available on request)

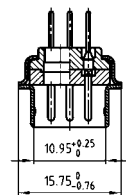
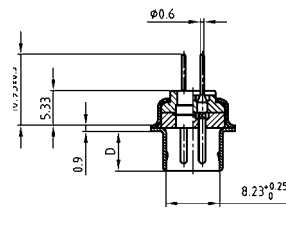
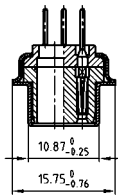
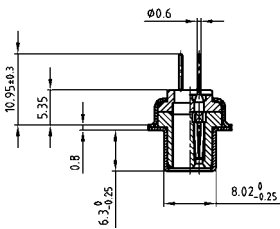
## PLUG CONNECTOR



Shell size	A -0.76	B -0.25	C	D -0.30
1	31.19	16.79	25.00 <sup>+0.12</sup> / <sub>-0.13</sub>	6.12
2	39.52	25.12	33.30 <sup>+0.15</sup> / <sub>-0.10</sub>	6.12
3	53.42	38.84	47.04 <sup>+0.13</sup> / <sub>-0.11</sub>	5.99
4	69.70	55.30	63.50 <sup>+0.13</sup> / <sub>-0.11</sub>	5.99
5	67.31	52.68	61.10 <sup>+0.14</sup> / <sub>-0.11</sub>	5.99

Shell size 1-4

Shell size 5



## ORDER DATA

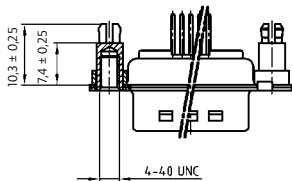
### SOCKET CONNECTOR

Design	Mounting style 4-40 UNC	Part Number
5W1	Threaded rear spacer PCB clip	3 005W1SAR99E20 X
7W2	Threaded rear spacer PCB clip	3 007W2SAR99E20 X
11W1	Threaded rear spacer PCB clip	3 011W1SAR99E20 X
9W4	Threaded rear spacer PCB clip	3 009W4SAR99E20 X
13W3	Threaded rear spacer PCB clip	3 013W3SAR99E20 X
17W2	Threaded rear spacer PCB clip	3 017W2SAR99E20 X
21W1	Threaded rear spacer PCB clip	3 021W1SAR99E20 X
13W6	Threaded rear spacer PCB clip	3 013W6SAR99E20 X
17W5	Threaded rear spacer PCB clip	3 017W5SAR99E20 X
21WA4	Threaded rear spacer PCB clip	3 21WA4SAR99E20 X
25W3	Threaded rear spacer PCB clip	3 025W3SAR99E20 X
27W2	Threaded rear spacer PCB clip	3 027W2SAR99E20 X
24W7	Threaded rear spacer PCB clip	3 024W7SAR99E20 X
36W4	Threaded rear spacer PCB clip	3 036W4SAR99E20 X
43W2	Threaded rear spacer PCB clip	3 043W2SAR99E20 X
47W1	Threaded rear spacer PCB clip	3 047W1SAR99E20 X

### PLUG CONNECTOR

Design	Mounting style 4-40 UNC	Part Number
5W1	Threaded rear spacer PCB clip	3 005W1PAR99E20 X
7W2	Threaded rear spacer PCB clip	3 007W2PAR99E20 X
11W1	Threaded rear spacer PCB clip	3 011W1PAR99E20 X
9W4	Threaded rear spacer PCB clip	3 009W4PAR99E20 X
13W3	Threaded rear spacer PCB clip	3 013W3PAR99E20 X
17W2	Threaded rear spacer PCB clip	3 017W2PAR99E20 X
21W1	Threaded rear spacer PCB clip	3 021W1PAR99E20 X
13W6	Threaded rear spacer PCB clip	3 013W6PAR99E20 X
17W5	Threaded rear spacer PCB clip	3 017W5PAR99E20 X
21WA4	Threaded rear spacer PCB clip	3 21WA4PAR99E20 X
25W3	Threaded rear spacer PCB clip	3 025W3PAR99E20 X
27W2	Threaded rear spacer PCB clip	3 027W2PAR99E20 X
24W7	Threaded rear spacer PCB clip	3 024W7PAR99E20 X
36W4	Threaded rear spacer PCB clip	3 036W4PAR99E20 X
43W2	Threaded rear spacer PCB clip	3 043W2PAR99E20 X
47W1	Threaded rear spacer PCB clip	3 047W1PAR99E20 X

PCB thickness .063" / 1.6 mm



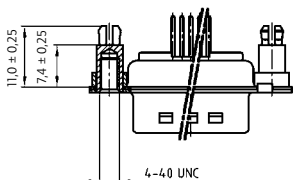
PCB clip .122" / 3.1 ± .004" / 0.10 mm hole diameter

# COMBINATION D-SUB – MOUNTING STYLES

## Solder pin – Straight – Precision machined contacts

ORDER DATA

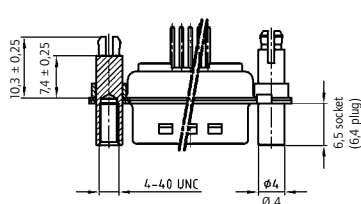
PCB thickness .091"/2.3 mm



SOCKET CONNECTOR		
Design	Mounting style 4-40 UNC	Part Number
5W1	Threaded rear spacer PCB clip	3 005W1SAR99E40 X
7W2	Threaded rear spacer PCB clip	3 007W2SAR99E40 X
11W1	Threaded rear spacer PCB clip	3 011W1SAR99E40 X
9W4	Threaded rear spacer PCB clip	3 009W4SAR99E40 X
13W3	Threaded rear spacer PCB clip	3 013W3SAR99E40 X
17W2	Threaded rear spacer PCB clip	3 017W2SAR99E40 X
21W1	Threaded rear spacer PCB clip	3 021W1SAR99E40 X
13W6	Threaded rear spacer PCB clip	3 013W6SAR99E40 X
17W5	Threaded rear spacer PCB clip	3 017W5SAR99E40 X
21WA4	Threaded rear spacer PCB clip	3 21WA4SAR99E40 X
25W3	Threaded rear spacer PCB clip	3 025W3SAR99E40 X
27W2	Threaded rear spacer PCB clip	3 027W2SAR99E40 X
24W7	Threaded rear spacer PCB clip	3 024W7SAR99E40 X
36W4	Threaded rear spacer PCB clip	3 036W4SAR99E40 X
43W2	Threaded rear spacer PCB clip	3 043W2SAR99E40 X
47W1	Threaded rear spacer PCB clip	3 047W1SAR99E40 X

PLUG CONNECTOR		
Design	Mounting style 4-40 UNC	Part Number
5W1	Threaded rear spacer PCB clip	3 005W1PAR99E40 X
7W2	Threaded rear spacer PCB clip	3 007W2PAR99E40 X
11W1	Threaded rear spacer PCB clip	3 011W1PAR99E40 X
9W4	Threaded rear spacer PCB clip	3 009W4PAR99E40 X
13W3	Threaded rear spacer PCB clip	3 013W3PAR99E40 X
17W2	Threaded rear spacer PCB clip	3 017W2PAR99E40 X
21W1	Threaded rear spacer PCB clip	3 021W1PAR99E40 X
13W6	Threaded rear spacer PCB clip	3 013W6PAR99E40 X
17W5	Threaded rear spacer PCB clip	3 017W5PAR99E40 X
21WA4	Threaded rear spacer PCB clip	3 21WA4PAR99E40 X
25W3	Threaded rear spacer PCB clip	3 025W3PAR99E40 X
27W2	Threaded rear spacer PCB clip	3 027W2PAR99E40 X
24W7	Threaded rear spacer PCB clip	3 024W7PAR99E40 X
36W4	Threaded rear spacer PCB clip	3 036W4PAR99E40 X
43W2	Threaded rear spacer PCB clip	3 043W2PAR99E40 X
47W1	Threaded rear spacer PCB clip	3 047W1PAR99E40 X

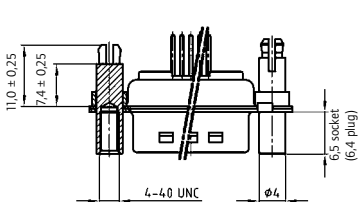
PCB thickness .063"/1.6 mm



SOCKET CONNECTOR		
Design	Mounting style 4-40 UNC	Part Number
5W1	Front/Threaded rear spacer PCB clip	3 005W1SAR99F20 X
7W2	Front/Threaded rear spacer PCB clip	3 007W2SAR99F20 X
11W1	Front/Threaded rear spacer PCB clip	3 011W1SAR99F20 X
9W4	Front/Threaded rear spacer PCB clip	3 009W4SAR99F20 X
13W3	Front/Threaded rear spacer PCB clip	3 013W3SAR99F20 X
17W2	Front/Threaded rear spacer PCB clip	3 017W2SAR99F20 X
21W1	Front/Threaded rear spacer PCB clip	3 021W1SAR99F20 X
13W6	Front/Threaded rear spacer PCB clip	3 013W6SAR99F20 X
17W5	Front/Threaded rear spacer PCB clip	3 017W5SAR99F20 X
21WA4	Front/Threaded rear spacer PCB clip	3 21WA4SAR99F20 X
25W3	Front/Threaded rear spacer PCB clip	3 025W3SAR99F20 X
27W2	Front/Threaded rear spacer PCB clip	3 027W2SAR99F20 X
24W7	Front/Threaded rear spacer PCB clip	3 024W7SAR99F20 X
36W4	Front/Threaded rear spacer PCB clip	3 036W4SAR99F20 X
43W2	Front/Threaded rear spacer PCB clip	3 043W2SAR99F20 X
47W1	Front/Threaded rear spacer PCB clip	3 047W1SAR99F20 X

PLUG CONNECTOR		
Design	Mounting style 4-40 UNC	Part Number
5W1	Front/Threaded rear spacer PCB clip	3 005W1PAR99F20 X
7W2	Front/Threaded rear spacer PCB clip	3 007W2PAR99F20 X
11W1	Front/Threaded rear spacer PCB clip	3 011W1PAR99F20 X
9W4	Front/Threaded rear spacer PCB clip	3 009W4PAR99F20 X
13W3	Front/Threaded rear spacer PCB clip	3 013W3PAR99F20 X
17W2	Front/Threaded rear spacer PCB clip	3 017W2PAR99F20 X
21W1	Front/Threaded rear spacer PCB clip	3 021W1PAR99F20 X
13W6	Front/Threaded rear spacer PCB clip	3 013W6PAR99F20 X
17W5	Front/Threaded rear spacer PCB clip	3 017W5PAR99F20 X
21WA4	Front/Threaded rear spacer PCB clip	3 21WA4PAR99F20 X
25W3	Front/Threaded rear spacer PCB clip	3 025W3PAR99F20 X
27W2	Front/Threaded rear spacer PCB clip	3 027W2PAR99F20 X
24W7	Front/Threaded rear spacer PCB clip	3 024W7PAR99F20 X
36W4	Front/Threaded rear spacer PCB clip	3 036W4PAR99F20 X
43W2	Front/Threaded rear spacer PCB clip	3 043W2PAR99F20 X
47W1	Front/Threaded rear spacer PCB clip	3 047W1PAR99F20 X

PCB thickness .091"/2.3 mm



SOCKET CONNECTOR		
Design	Mounting style 4-40 UNC	Part Number
5W1	Front/Threaded rear spacer PCB clip	3 005W1SAR99F40 X
7W2	Front/Threaded rear spacer PCB clip	3 007W2SAR99F40 X
11W1	Front/Threaded rear spacer PCB clip	3 011W1SAR99F40 X
9W4	Front/Threaded rear spacer PCB clip	3 009W4SAR99F40 X
13W3	Front/Threaded rear spacer PCB clip	3 013W3SAR99F40 X
17W2	Front/Threaded rear spacer PCB clip	3 017W2SAR99F40 X
21W1	Front/Threaded rear spacer PCB clip	3 021W1SAR99F40 X
13W6	Front/Threaded rear spacer PCB clip	3 013W6SAR99F40 X
17W5	Front/Threaded rear spacer PCB clip	3 017W5SAR99F40 X
21WA4	Front/Threaded rear spacer PCB clip	3 21WA4SAR99F40 X
25W3	Front/Threaded rear spacer PCB clip	3 025W3SAR99F40 X
27W2	Front/Threaded rear spacer PCB clip	3 027W2SAR99F40 X
24W7	Front/Threaded rear spacer PCB clip	3 024W7SAR99F40 X
36W4	Front/Threaded rear spacer PCB clip	3 036W4SAR99F40 X
43W2	Front/Threaded rear spacer PCB clip	3 043W2SAR99F40 X
47W1	Front/Threaded rear spacer PCB clip	3 047W1SAR99F40 X

PLUG CONNECTOR		
Design	Mounting style 4-40 UNC	Part Number
5W1	Front/Threaded rear spacer PCB clip	3 005W1PAR99F40 X
7W2	Front/Threaded rear spacer PCB clip	3 007W2PAR99F40 X
11W1	Front/Threaded rear spacer PCB clip	3 011W1PAR99F40 X
9W4	Front/Threaded rear spacer PCB clip	3 009W4PAR99F40 X
13W3	Front/Threaded rear spacer PCB clip	3 013W3PAR99F40 X
17W2	Front/Threaded rear spacer PCB clip	3 017W2PAR99F40 X
21W1	Front/Threaded rear spacer PCB clip	3 021W1PAR99F40 X
13W6	Front/Threaded rear spacer PCB clip	3 013W6PAR99F40 X
17W5	Front/Threaded rear spacer PCB clip	3 017W5PAR99F40 X
21WA4	Front/Threaded rear spacer PCB clip	3 21WA4PAR99F40 X
25W3	Front/Threaded rear spacer PCB clip	3 025W3PAR99F40 X
27W2	Front/Threaded rear spacer PCB clip	3 027W2PAR99F40 X
24W7	Front/Threaded rear spacer PCB clip	3 024W7PAR99F40 X
36W4	Front/Threaded rear spacer PCB clip	3 036W4PAR99F40 X
43W2	Front/Threaded rear spacer PCB clip	3 043W2PAR99F40 X
47W1	Front/Threaded rear spacer PCB clip	3 047W1PAR99F40 X

PCB clip .122"/3.1 ± .004"/0.10 mm hole diameter

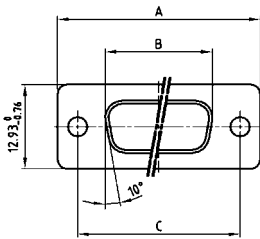
# COMBINATION D-SUB WITH SIGNAL CONTACTS

Solder pin – Straight – Precision machined contacts



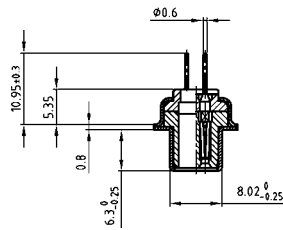
RoHS compliant – CSA listed, File No.: LR 115000-1 – UL listed, File No.: E 228329

## SOCKET CONNECTOR

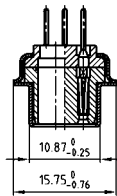


Shell size	A -0.76	B -0.25	C
1	31.19	16.46	25.00 <sup>+0.12</sup> <sub>-0.13</sub>
2	39.52	24.79	33.30 <sup>+0.15</sup> <sub>-0.10</sub>
3	53.42	38.50	47.04 <sup>+0.13</sup>
4	69.70	54.96	63.50 <sup>+0.13</sup>
5	67.31	52.55	61.10 <sup>+0.14</sup> <sub>-0.11</sub>

Shell size 1-4



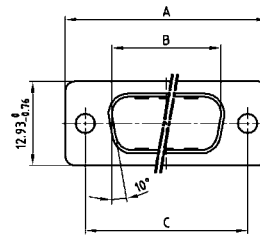
Shell size 5



## DESCRIPTION

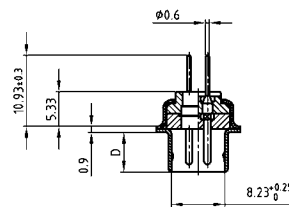
- Threaded rear spacer .256"/6.5 mm
- Mounting style:  
with 4-40 UNC threaded rear spacer with PCB clip  
for PCB thickness .063"/1.6 mm  
for PCB thickness .091"/2.3 mm  
for PCB thickness .126"/3.2 mm
- M3 and PCB clip with front spacer available on request
- Quality class 3 (also available in quality class 1)
- Shell: Steel tin plated (brass tin plated or stainless steel available on request)

## PLUG CONNECTOR

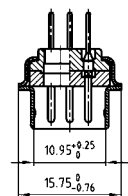


Shell size	A -0.76	B +0.25	C	D -0.30
1	31.19	16.79	25.00 <sup>+0.12</sup> <sub>-0.13</sub>	6.12
2	39.52	25.12	33.30 <sup>+0.15</sup> <sub>-0.10</sub>	6.12
3	53.42	38.84	47.04 <sup>+0.13</sup>	5.99
4	69.70	55.30	63.50 <sup>+0.13</sup>	5.99
5	67.31	52.68	61.10 <sup>+0.14</sup> <sub>-0.11</sub>	5.99

Shell size 1-4



Shell size 5



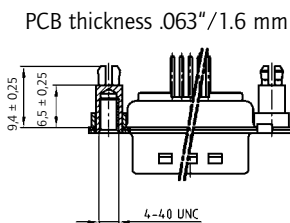
## ORDER DATA

### SOCKET CONNECTOR

Design	Mounting style 4-40 UNC	Part Number
5W1	Threaded rear spacer PCB clip	3 005W1SAR99C20 X
7W2	Threaded rear spacer PCB clip	3 007W2SAR99C20 X
11W1	Threaded rear spacer PCB clip	3 011W1SAR99C20 X
9W4	Threaded rear spacer PCB clip	3 009W4SAR99C20 X
13W3	Threaded rear spacer PCB clip	3 013W3SAR99C20 X
17W2	Threaded rear spacer PCB clip	3 017W2SAR99C20 X
21W1	Threaded rear spacer PCB clip	3 021W1SAR99C20 X
13W6	Threaded rear spacer PCB clip	3 013W6SAR99C20 X
17W5	Threaded rear spacer PCB clip	3 017W5SAR99C20 X
21WA4	Threaded rear spacer PCB clip	3 21WA4SAR99C20 X
25W3	Threaded rear spacer PCB clip	3 025W3SAR99C20 X
27W2	Threaded rear spacer PCB clip	3 027W2SAR99C20 X
24W7	Threaded rear spacer PCB clip	3 024W7SAR99C20 X
36W4	Threaded rear spacer PCB clip	3 036W4SAR99C20 X
43W2	Threaded rear spacer PCB clip	3 043W2SAR99C20 X
47W1	Threaded rear spacer PCB clip	3 047W1SAR99C20 X

### PLUG CONNECTOR

Design	Mounting style 4-40 UNC	Part Number
5W1	Threaded rear spacer PCB clip	3 005W1PAR99C20 X
7W2	Threaded rear spacer PCB clip	3 007W2PAR99C20 X
11W1	Threaded rear spacer PCB clip	3 011W1PAR99C20 X
9W4	Threaded rear spacer PCB clip	3 009W4PAR99C20 X
13W3	Threaded rear spacer PCB clip	3 013W3PAR99C20 X
17W2	Threaded rear spacer PCB clip	3 017W2PAR99C20 X
21W1	Threaded rear spacer PCB clip	3 021W1PAR99C20 X
13W6	Threaded rear spacer PCB clip	3 013W6PAR99C20 X
17W5	Threaded rear spacer PCB clip	3 017W5PAR99C20 X
21WA4	Threaded rear spacer PCB clip	3 21WA4PAR99C20 X
25W3	Threaded rear spacer PCB clip	3 025W3PAR99C20 X
27W2	Threaded rear spacer PCB clip	3 027W2PAR99C20 X
24W7	Threaded rear spacer PCB clip	3 024W7PAR99C20 X
36W4	Threaded rear spacer PCB clip	3 036W4PAR99C20 X
43W2	Threaded rear spacer PCB clip	3 043W2PAR99C20 X
47W1	Threaded rear spacer PCB clip	3 047W1PAR99C20 X



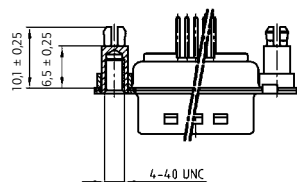
PCB clip .122"/3.1 ± .004"/0.10 mm hole diameter

# COMBINATION D-SUB – MOUNTING STYLES

## Solder pin – Straight – Precision machined contacts

ORDER DATA

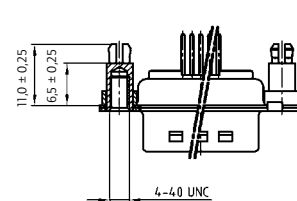
PCB thickness .091"/2.3 mm



SOCKET CONNECTOR		
Design	Mounting style 4-40 UNC	Part Number
5W1	Threaded rear spacer PCB clip	3 005W1SAR99C40 X
7W2	Threaded rear spacer PCB clip	3 007W2SAR99C40 X
11W1	Threaded rear spacer PCB clip	3 011W1SAR99C40 X
9W4	Threaded rear spacer PCB clip	3 009W4SAR99C40 X
13W3	Threaded rear spacer PCB clip	3 013W3SAR99C40 X
17W2	Threaded rear spacer PCB clip	3 017W2SAR99C40 X
21W1	Threaded rear spacer PCB clip	3 021W1SAR99C40 X
13W6	Threaded rear spacer PCB clip	3 013W6SAR99C40 X
17W5	Threaded rear spacer PCB clip	3 017W5SAR99C40 X
21WA4	Threaded rear spacer PCB clip	3 21WA4SAR99C40 X
25W3	Threaded rear spacer PCB clip	3 025W3SAR99C40 X
27W2	Threaded rear spacer PCB clip	3 027W2SAR99C40 X
24W7	Threaded rear spacer PCB clip	3 024W7SAR99C40 X
36W4	Threaded rear spacer PCB clip	3 036W4SAR99C40 X
43W2	Threaded rear spacer PCB clip	3 043W2SAR99C40 X
47W1	Threaded rear spacer PCB clip	3 047W1SAR99C40 X

PLUG CONNECTOR		
Design	Mounting style 4-40 UNC	Part Number
5W1	Threaded rear spacer PCB clip	3 005W1PAR99C40 X
7W2	Threaded rear spacer PCB clip	3 007W2PAR99C40 X
11W1	Threaded rear spacer PCB clip	3 011W1PAR99C40 X
9W4	Threaded rear spacer PCB clip	3 009W4PAR99C40 X
13W3	Threaded rear spacer PCB clip	3 013W3PAR99C40 X
17W2	Threaded rear spacer PCB clip	3 017W2PAR99C40 X
21W1	Threaded rear spacer PCB clip	3 021W1PAR99C40 X
13W6	Threaded rear spacer PCB clip	3 013W6PAR99C40 X
17W5	Threaded rear spacer PCB clip	3 017W5PAR99C40 X
21WA4	Threaded rear spacer PCB clip	3 21WA4PAR99C40 X
25W3	Threaded rear spacer PCB clip	3 025W3PAR99C40 X
27W2	Threaded rear spacer PCB clip	3 027W2PAR99C40 X
24W7	Threaded rear spacer PCB clip	3 024W7PAR99C40 X
36W4	Threaded rear spacer PCB clip	3 036W4PAR99C40 X
43W2	Threaded rear spacer PCB clip	3 043W2PAR99C40 X
47W1	Threaded rear spacer PCB clip	3 047W1PAR99C40 X

PCB thickness .126"/3.2 mm



SOCKET CONNECTOR		
Design	Mounting style 4-40 UNC	Part Number
5W1	Threaded rear spacer PCB clip	3 005W1SAR99C60 X
7W2	Threaded rear spacer PCB clip	3 007W2SAR99C60 X
11W1	Threaded rear spacer PCB clip	3 011W1SAR99C60 X
9W4	Threaded rear spacer PCB clip	3 009W4SAR99C60 X
13W3	Threaded rear spacer PCB clip	3 013W3SAR99C60 X
17W2	Threaded rear spacer PCB clip	3 017W2SAR99C60 X
21W1	Threaded rear spacer PCB clip	3 021W1SAR99C60 X
13W6	Threaded rear spacer PCB clip	3 013W6SAR99C60 X
17W5	Threaded rear spacer PCB clip	3 017W5SAR99C60 X
21WA4	Threaded rear spacer PCB clip	3 21WA4SAR99C60 X
25W3	Threaded rear spacer PCB clip	3 025W3SAR99C60 X
27W2	Threaded rear spacer PCB clip	3 027W2SAR99C60 X
24W7	Threaded rear spacer PCB clip	3 024W7SAR99C60 X
36W4	Threaded rear spacer PCB clip	3 036W4SAR99C60 X
43W2	Threaded rear spacer PCB clip	3 043W2SAR99C60 X
47W1	Threaded rear spacer PCB clip	3 047W1SAR99C60 X

PLUG CONNECTOR		
Design	Mounting style 4-40 UNC	Part Number
5W1	Threaded rear spacer PCB clip	3 005W1PAR99C60 X
7W2	Threaded rear spacer PCB clip	3 007W2PAR99C60 X
11W1	Threaded rear spacer PCB clip	3 011W1PAR99C60 X
9W4	Threaded rear spacer PCB clip	3 009W4PAR99C60 X
13W3	Threaded rear spacer PCB clip	3 013W3PAR99C60 X
17W2	Threaded rear spacer PCB clip	3 017W2PAR99C60 X
21W1	Threaded rear spacer PCB clip	3 021W1PAR99C60 X
13W6	Threaded rear spacer PCB clip	3 013W6PAR99C60 X
17W5	Threaded rear spacer PCB clip	3 017W5PAR99C60 X
21WA4	Threaded rear spacer PCB clip	3 21WA4PAR99C60 X
25W3	Threaded rear spacer PCB clip	3 025W3PAR99C60 X
27W2	Threaded rear spacer PCB clip	3 027W2PAR99C60 X
24W7	Threaded rear spacer PCB clip	3 024W7PAR99C60 X
36W4	Threaded rear spacer PCB clip	3 036W4PAR99C60 X
43W2	Threaded rear spacer PCB clip	3 043W2PAR99C60 X
47W1	Threaded rear spacer PCB clip	3 047W1PAR99C60 X

PCB clip .122" / 3.1 ± .004" / 0.10 mm hole diameter



# COMBINATION D-SUB WITH SIGNAL CONTACTS

Press-fit – Straight – Precision machined contacts

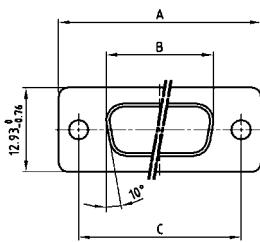


RoHS compliant – CSA listed, File No.: LR 115000-1 – UL listed, File No.: E 228329

## DESCRIPTION

- Mounting styles:
  - with 4-40 UNC or M3 threaded rear spacer
  - with M3 or 4-40 UNC rear press-fit spacer
- Quality class 3 (also available in quality class 1)
- Shell: Steel tin plated (brass tin plated or stainless steel available on request)

## SOCKET CONNECTOR



Shell size	A -0.76	B -0.25	C
1	31.19	16.46	25.00 <sup>+0.12</sup> <sub>-0.13</sub>
2	39.52	24.79	33.30 <sup>+0.15</sup> <sub>-0.10</sub>
3	53.42	38.50	47.04 <sup>+0.13</sup>
4	69.70	54.96	63.50 <sup>+0.13</sup>
5	67.31	52.55	61.10 <sup>+0.14</sup> <sub>-0.11</sub>

Shell size 1-4

Shell size 5

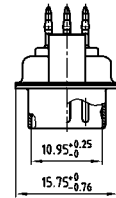
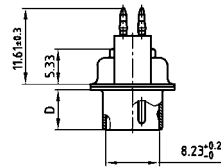
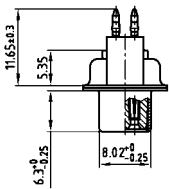
## PLUG CONNECTOR



Shell size	A -0.76	B +0.25	C	D -0.30
1	31.19	16.79	25.00 <sup>+0.12</sup> <sub>-0.13</sub>	6.12
2	39.52	25.12	33.30 <sup>+0.15</sup> <sub>-0.10</sub>	6.12
3	53.42	38.84	47.04 <sup>+0.13</sup>	5.99
4	69.70	55.30	63.50 <sup>+0.13</sup>	5.99
5	67.31	52.68	61.10 <sup>+0.14</sup> <sub>-0.11</sub>	5.99

Shell size 1-4

Shell size 5



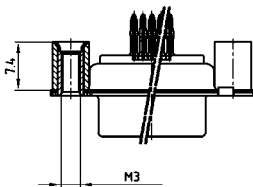
## ORDER DATA

### SOCKET CONNECTOR

Design	Mounting style M3	Part Number
5W1	Threaded rear spacer	3 005W1AP99A70 X
7W2	Threaded rear spacer	3 007W2SAP99A70 X
11W1	Threaded rear spacer	3 011W1SAP99A70 X
9W4	Threaded rear spacer	3 009W4SAP99A70 X
13W3	Threaded rear spacer	3 013W3SAP99A70 X
17W2	Threaded rear spacer	3 017W2SAP99A70 X
21W1	Threaded rear spacer	3 021W1SAP99A70 X
13W6	Threaded rear spacer	3 013W6SAP99A70 X
17W5	Threaded rear spacer	3 017W5SAP99A70 X
21WA4	Threaded rear spacer	3 21WA4SAP99A70 X
25W3	Threaded rear spacer	3 025W3SAP99A70 X
27W2	Threaded rear spacer	3 027W2SAP99A70 X
24W7	Threaded rear spacer	3 024W7SAP99A70 X
36W4	Threaded rear spacer	3 036W4SAP99A70 X
43W2	Threaded rear spacer	3 043W2SAP99A70 X
47W1	Threaded rear spacer	3 047W1SAP99A70 X

### PLUG CONNECTOR

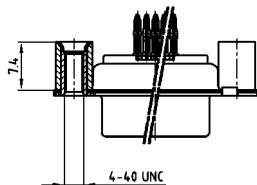
Design	Mounting style M3	Part Number
5W1	Threaded rear spacer	3 005W1PAP99A70 X
7W2	Threaded rear spacer	3 007W2PAP99A70 X
11W1	Threaded rear spacer	3 011W1PAP99A70 X
9W4	Threaded rear spacer	3 009W4PAP99A70 X
13W3	Threaded rear spacer	3 013W3PAP99A70 X
17W2	Threaded rear spacer	3 017W2PAP99A70 X
21W1	Threaded rear spacer	3 021W1PAP99A70 X
13W6	Threaded rear spacer	3 013W6PAP99A70 X
17W5	Threaded rear spacer	3 017W5PAP99A70 X
21WA4	Threaded rear spacer	3 21WA4PAP99A70 X
25W3	Threaded rear spacer	3 025W3PAP99A70 X
27W2	Threaded rear spacer	3 027W2PAP99A70 X
24W7	Threaded rear spacer	3 024W7PAP99A70 X
36W4	Threaded rear spacer	3 036W4PAP99A70 X
43W2	Threaded rear spacer	3 043W2PAP99A70 X
47W1	Threaded rear spacer	3 047W1PAP99A70 X



# COMBINATION D-SUB – MOUNTING STYLES

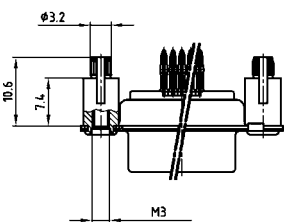
Press-fit – Straight – Precision machined contacts

ORDER DATA



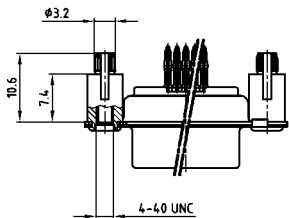
SOCKET CONNECTOR		
Design	Mounting style 4-40 UNC	Part Number
5W1	Threaded rear spacer	3 005W1SAP99A80 X
7W2	Threaded rear spacer	3 007W2SAP99A80 X
11W1	Threaded rear spacer	3 011W1SAP99A80 X
9W4	Threaded rear spacer	3 009W4SAP99A80 X
13W3	Threaded rear spacer	3 013W3SAP99A80 X
17W2	Threaded rear spacer	3 017W2SAP99A80 X
21W1	Threaded rear spacer	3 021W1SAP99A80 X
13W6	Threaded rear spacer	3 013W6SAP99A80 X
17W5	Threaded rear spacer	3 017W5SAP99A80 X
21WA4	Threaded rear spacer	3 21WA4SAP99A80 X
25W3	Threaded rear spacer	3 025W3SAP99A80 X
27W2	Threaded rear spacer	3 027W2SAP99A80 X
24W7	Threaded rear spacer	3 024W7SAP99A80 X
36W4	Threaded rear spacer	3 036W4SAP99A80 X
43W2	Threaded rear spacer	3 043W2SAP99A80 X
47W1	Threaded rear spacer	3 047W1SAP99A80 X

PLUG CONNECTOR		
Design	Mounting style 4-40 UNC	Part Number
5W1	Threaded rear spacer	3 005W1PAP99A80 X
7W2	Threaded rear spacer	3 007W2PAP99A80 X
11W1	Threaded rear spacer	3 011W1PAP99A80 X
9W4	Threaded rear spacer	3 009W4PAP99A80 X
13W3	Threaded rear spacer	3 013W3PAP99A80 X
17W2	Threaded rear spacer	3 017W2PAP99A80 X
21W1	Threaded rear spacer	3 021W1PAP99A80 X
13W6	Threaded rear spacer	3 013W6PAP99A80 X
17W5	Threaded rear spacer	3 017W5PAP99A80 X
21WA4	Threaded rear spacer	3 21WA4PAP99A80 X
25W3	Threaded rear spacer	3 025W3PAP99A80 X
27W2	Threaded rear spacer	3 027W2PAP99A80 X
24W7	Threaded rear spacer	3 024W7PAP99A80 X
36W4	Threaded rear spacer	3 036W4PAP99A80 X
43W2	Threaded rear spacer	3 043W2PAP99A80 X
47W1	Threaded rear spacer	3 047W1PAP99A80 X



SOCKET CONNECTOR		
Design	Mounting style M3	Part Number
5W1	Rear press-fit spacer	3 005W1SAP99W10 X
7W2	Rear press-fit spacer	3 007W2SAP99W10 X
11W1	Rear press-fit spacer	3 011W1SAP99W10 X
9W4	Rear press-fit spacer	3 009W4SAP99W10 X
13W3	Rear press-fit spacer	3 013W3SAP99W10 X
17W2	Rear press-fit spacer	3 017W2SAP99W10 X
21W1	Rear press-fit spacer	3 021W1SAP99W10 X
13W6	Rear press-fit spacer	3 013W6SAP99W10 X
17W5	Rear press-fit spacer	3 017W5SAP99W10 X
21WA4	Rear press-fit spacer	3 21WA4SAP99W10 X
25W3	Rear press-fit spacer	3 025W3SAP99W10 X
27W2	Rear press-fit spacer	3 027W2SAP99W10 X
24W7	Rear press-fit spacer	3 024W7SAP99W10 X
36W4	Rear press-fit spacer	3 036W4SAP99W10 X
43W2	Rear press-fit spacer	3 043W2SAP99W10 X
47W1	Rear press-fit spacer	3 047W1SAP99W10 X

PLUG CONNECTOR		
Design	Mounting style M3	Part Number
5W1	Rear press-fit spacer	3 005W1PAP99W10 X
7W2	Rear press-fit spacer	3 007W2PAP99W10 X
11W1	Rear press-fit spacer	3 011W1PAP99W10 X
9W4	Rear press-fit spacer	3 009W4PAP99W10 X
13W3	Rear press-fit spacer	3 013W3PAP99W10 X
17W2	Rear press-fit spacer	3 017W2PAP99W10 X
21W1	Rear press-fit spacer	3 021W1PAP99W10 X
13W6	Rear press-fit spacer	3 013W6PAP99W10 X
17W5	Rear press-fit spacer	3 017W5PAP99W10 X
21WA4	Rear press-fit spacer	3 21WA4PAP99W10 X
25W3	Rear press-fit spacer	3 025W3PAP99W10 X
27W2	Rear press-fit spacer	3 027W2PAP99W10 X
24W7	Rear press-fit spacer	3 024W7PAP99W10 X
36W4	Rear press-fit spacer	3 036W4PAP99W10 X
43W2	Rear press-fit spacer	3 043W2PAP99W10 X
47W1	Rear press-fit spacer	3 047W1PAP99W10 X



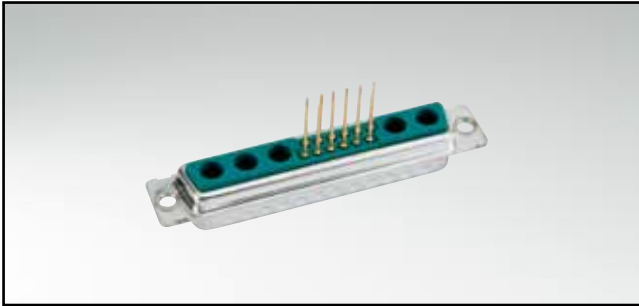
SOCKET CONNECTOR		
Design	Mounting style 4-40 UNC	Part Number
5W1	Rear press-fit spacer	3 005W1SAP99W20 X
7W2	Rear press-fit spacer	3 007W2SAP99W20 X
11W1	Rear press-fit spacer	3 011W1SAP99W20 X
9W4	Rear press-fit spacer	3 009W4SAP99W20 X
13W3	Rear press-fit spacer	3 013W3SAP99W20 X
17W2	Rear press-fit spacer	3 017W2SAP99W20 X
21W1	Rear press-fit spacer	3 021W1SAP99W20 X
13W6	Rear press-fit spacer	3 013W6SAP99W20 X
17W5	Rear press-fit spacer	3 017W5SAP99W20 X
21WA4	Rear press-fit spacer	3 21WA4SAP99W20 X
25W3	Rear press-fit spacer	3 025W3SAP99W20 X
27W2	Rear press-fit spacer	3 027W2SAP99W20 X
24W7	Rear press-fit spacer	3 024W7SAP99W20 X
36W4	Rear press-fit spacer	3 036W4SAP99W20 X
43W2	Rear press-fit spacer	3 043W2SAP99W20 X
47W1	Rear press-fit spacer	3 047W1SAP99W20 X

PLUG CONNECTOR		
Design	Mounting style 4-40 UNC	Part Number
5W1	Rear press-fit spacer	3 005W1PAP99W20 X
7W2	Rear press-fit spacer	3 007W2PAP99W20 X
11W1	Rear press-fit spacer	3 011W1PAP99W20 X
9W4	Rear press-fit spacer	3 009W4PAP99W20 X
13W3	Rear press-fit spacer	3 013W3PAP99W20 X
17W2	Rear press-fit spacer	3 017W2PAP99W20 X
21W1	Rear press-fit spacer	3 021W1PAP99W20 X
13W6	Rear press-fit spacer	3 013W6PAP99W20 X
17W5	Rear press-fit spacer	3 017W5PAP99W20 X
21WA4	Rear press-fit spacer	3 21WA4PAP99W20 X
25W3	Rear press-fit spacer	3 025W3PAP99W20 X
27W2	Rear press-fit spacer	3 027W2PAP99W20 X
24W7	Rear press-fit spacer	3 024W7PAP99W20 X
36W4	Rear press-fit spacer	3 036W4PAP99W20 X
43W2	Rear press-fit spacer	3 043W2PAP99W20 X
47W1	Rear press-fit spacer	3 047W1PAP99W20 X

Rear press-fit spacer (snap in) .122"/3.1 ± .004"/0.10 mm hole diameter and .063"/1.6 mm circuit board thickness

# COMBINATION D-SUB WITH SIGNAL CONTACTS

Wire wrap – 3 level – Precision machined contacts

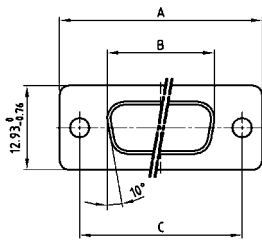


RoHS compliant – CSA listed, File No.: LR 115000-1 – UL listed, File No.: E 228329

## DESCRIPTION

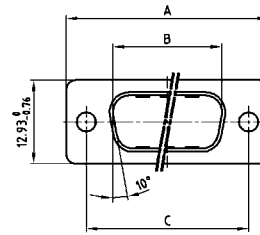
- Mounting styles:
  - with through-hole,  $\varnothing .118'' / 3 \text{ mm}$
  - with 4-40 UNC or M3 threaded insert
- Quality class 3 (also available in quality class 1)
- Shell: Steel tin plated (brass tin plated or stainless steel available on request)

## SOCKET CONNECTOR



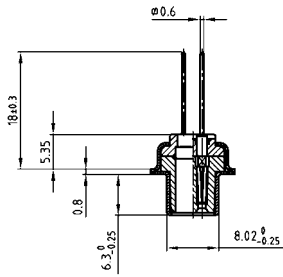
Shell size	A -0.76	B -0.25	C
1	31.19	16.46	25.00 <sup>+0.12</sup> <sub>-0.13</sub>
2	39.52	24.79	33.30 <sup>+0.15</sup> <sub>-0.10</sub>
3	53.42	38.50	47.04 <sup>+0.13</sup>
4	69.70	54.96	63.50 <sup>+0.13</sup>
5	67.31	52.55	61.10 <sup>+0.14</sup> <sub>-0.11</sub>

## PLUG CONNECTOR

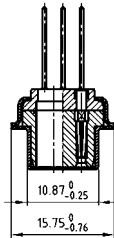


Shell size	A -0.76	B +0.25	C	D -0.30
1	31.19	16.79	25.00 <sup>+0.12</sup> <sub>-0.13</sub>	6.12
2	39.52	25.12	33.30 <sup>+0.15</sup> <sub>-0.10</sub>	6.12
3	53.42	38.84	47.04 <sup>+0.13</sup>	5.99
4	69.70	55.30	63.50 <sup>+0.13</sup>	5.99
5	67.31	52.68	61.10 <sup>+0.14</sup> <sub>-0.11</sub>	5.99

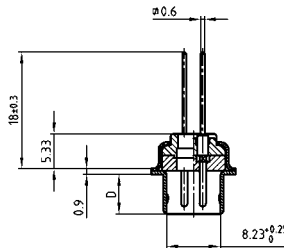
Shell size 1-4



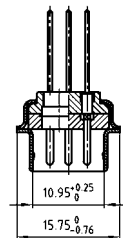
Shell size 5



Shell size 1-4



Shell size 5



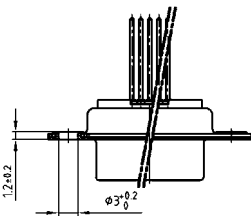
## ORDER DATA

### SOCKET CONNECTOR

Design	Mounting style	Part Number
5W1	Through-hole	3 005W1SAN99A10 X
7W2	Through-hole	3 007W2SAN99A10 X
11W1	Through-hole	3 011W1SAN99A10 X
9W4	Through-hole	3 009W4SAN99A10 X
13W3	Through-hole	3 013W3SAN99A10 X
17W2	Through-hole	3 017W2SAN99A10 X
21W1	Through-hole	3 021W1SAN99A10 X
13W6	Through-hole	3 013W6SAN99A10 X
17W5	Through-hole	3 017W5SAN99A10 X
21WA4	Through-hole	3 21WA4SAN99A10 X
25W3	Through-hole	3 025W3SAN99A10 X
27W2	Through-hole	3 027W2SAN99A10 X
24W7	Through-hole	3 024W7SAN99A10 X
36W4	Through-hole	3 036W4SAN99A10 X
43W2	Through-hole	3 043W2SAN99A10 X
47W1	Through-hole	3 047W1SAN99A10 X

### PLUG CONNECTOR

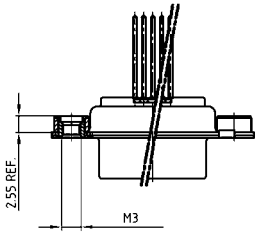
Design	Mounting style	Part Number
5W1	Through-hole	3 005W1PAN99A10 X
7W2	Through-hole	3 007W2PAN99A10 X
11W1	Through-hole	3 011W1PAN99A10 X
9W4	Through-hole	3 009W4PAN99A10 X
13W3	Through-hole	3 013W3PAN99A10 X
17W2	Through-hole	3 017W2PAN99A10 X
21W1	Through-hole	3 021W1PAN99A10 X
13W6	Through-hole	3 013W6PAN99A10 X
17W5	Through-hole	3 017W5PAN99A10 X
21WA4	Through-hole	3 21WA4PAN99A10 X
25W3	Through-hole	3 025W3PAN99A10 X
27W2	Through-hole	3 027W2PAN99A10 X
24W7	Through-hole	3 024W7PAN99A10 X
36W4	Through-hole	3 036W4PAN99A10 X
43W2	Through-hole	3 043W2PAN99A10 X
47W1	Through-hole	3 047W1PAN99A10 X



# COMBINATION D-SUB – MOUNTING STYLES

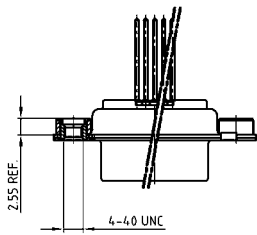
Wire wrap – 3 level – Precision machined contacts

ORDER DATA



SOCKET CONNECTOR		
Design	Mounting style M3	Part Number
5W1	Threaded insert	3 005W1SAN99A20 X
7W2	Threaded insert	3 007W2SAN99A20 X
11W1	Threaded insert	3 011W1SAN99A20 X
9W4	Threaded insert	3 009W4SAN99A20 X
13W3	Threaded insert	3 013W3SAN99A20 X
17W2	Threaded insert	3 017W2SAN99A20 X
21W1	Threaded insert	3 021W1SAN99A20 X
13W6	Threaded insert	3 013W6SAN99A20 X
17W5	Threaded insert	3 017W5SAN99A20 X
21WA4	Threaded insert	3 21WA4SAN99A20 X
25W3	Threaded insert	3 025W3SAN99A20 X
27W2	Threaded insert	3 027W2SAN99A20 X
24W7	Threaded insert	3 024W7SAN99A20 X
36W4	Threaded insert	3 036W4SAN99A20 X
43W2	Threaded insert	3 043W2SAN99A20 X
47W1	Threaded insert	3 047W1SAN99A20 X

PLUG CONNECTOR		
Design	Mounting style M3	Part Number
5W1	Threaded insert	3 005W1PAN99A20 X
7W2	Threaded insert	3 007W2PAN99A20 X
11W1	Threaded insert	3 011W1PAN99A20 X
9W4	Threaded insert	3 009W4PAN99A20 X
13W3	Threaded insert	3 013W3PAN99A20 X
17W2	Threaded insert	3 017W2PAN99A20 X
21W1	Threaded insert	3 021W1PAN99A20 X
13W6	Threaded insert	3 013W6PAN99A20 X
17W5	Threaded insert	3 017W5PAN99A20 X
21WA4	Threaded insert	3 21WA4PAN99A20 X
25W3	Threaded insert	3 025W3PAN99A20 X
27W2	Threaded insert	3 027W2PAN99A20 X
24W7	Threaded insert	3 024W7PAN99A20 X
36W4	Threaded insert	3 036W4PAN99A20 X
43W2	Threaded insert	3 043W2PAN99A20 X
47W1	Threaded insert	3 047W1PAN99A20 X

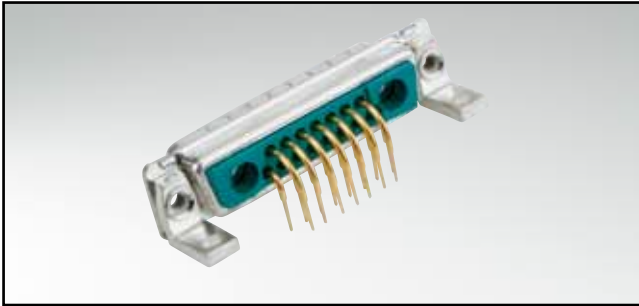


SOCKET CONNECTOR		
Design	Mounting style 4-40 UNC	Part Number
5W1	Threaded insert	3 005W1SAN99A30 X
7W2	Threaded insert	3 007W2SAN99A30 X
11W1	Threaded insert	3 011W1SAN99A30 X
9W4	Threaded insert	3 009W4SAN99A30 X
13W3	Threaded insert	3 013W3SAN99A30 X
17W2	Threaded insert	3 017W2SAN99A30 X
21W1	Threaded insert	3 021W1SAN99A30 X
13W6	Threaded insert	3 013W6SAN99A30 X
17W5	Threaded insert	3 017W5SAN99A30 X
21WA4	Threaded insert	3 21WA4SAN99A30 X
25W3	Threaded insert	3 025W3SAN99A30 X
27W2	Threaded insert	3 027W2SAN99A30 X
24W7	Threaded insert	3 024W7SAN99A30 X
36W4	Threaded insert	3 036W4SAN99A30 X
43W2	Threaded insert	3 043W2SAN99A30 X
47W1	Threaded insert	3 047W1SAN99A30 X

PLUG CONNECTOR		
Design	Mounting style 4-40 UNC	Part Number
5W1	Threaded insert	3 005W1PAN99A30 X
7W2	Threaded insert	3 007W2PAN99A30 X
11W1	Threaded insert	3 011W1PAN99A30 X
9W4	Threaded insert	3 009W4PAN99A30 X
13W3	Threaded insert	3 013W3PAN99A30 X
17W2	Threaded insert	3 017W2PAN99A30 X
21W1	Threaded insert	3 021W1PAN99A30 X
13W6	Threaded insert	3 013W6PAN99A30 X
17W5	Threaded insert	3 017W5PAN99A30 X
21WA4	Threaded insert	3 21WA4PAN99A30 X
25W3	Threaded insert	3 025W3PAN99A30 X
27W2	Threaded insert	3 027W2PAN99A30 X
24W7	Threaded insert	3 024W7PAN99A30 X
36W4	Threaded insert	3 036W4PAN99A30 X
43W2	Threaded insert	3 043W2PAN99A30 X
47W1	Threaded insert	3 047W1PAN99A30 X

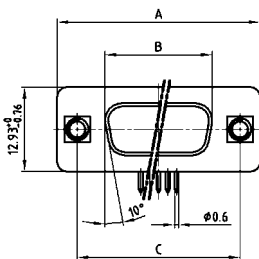
# COMBINATION D-SUB WITH SIGNAL CONTACTS

Solder pin – Angled – .318" / 7.19 mm – Precision machined contacts – Metal bracket



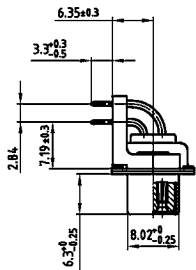
RoHS compliant – CSA listed, File No.: LR 115000-1 – UL listed, File No.: E 228329

## SOCKET CONNECTOR

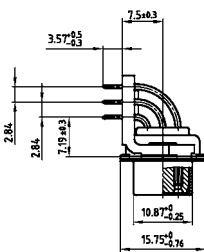


Shell size	A -0.76	B -0.25	C
1	31.19	16.46	25.00 <sup>+0.12</sup> <sub>-0.13</sub>
2	39.52	24.79	33.30 <sup>+0.15</sup> <sub>-0.10</sub>
3	53.42	38.50	47.04 <sup>+0.13</sup>
4	69.70	54.96	63.50 <sup>+0.13</sup>
5	67.31	52.55	61.10 <sup>+0.14</sup> <sub>-0.11</sub>

Shell size 1-4



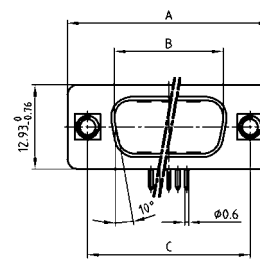
Shell size 5



## DESCRIPTION

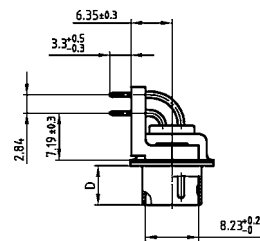
- Mounting styles:
  - with mounting bracket and 4-40 UNC threaded insert
  - with mounting bracket and 4-40 UNC front spacer
  - with mounting bracket, PCB clip and 4-40 UNC threaded insert
  - with mounting bracket, PCB clip and 4-40 UNC front spacer
- M3 thread design available on request
- Quality class 3 (also available in quality class 1)
- Shell: Steel tin plated (brass tin plated or stainless steel available on request)

## PLUG CONNECTOR

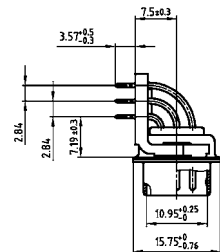


Shell size	A -0.76	B -0.25	C	D -0.30
1	31.19	16.79	25.00 <sup>+0.12</sup> <sub>-0.13</sub>	6.12
2	39.52	25.12	33.30 <sup>+0.15</sup> <sub>-0.10</sub>	6.12
3	53.42	38.84	47.04 <sup>+0.13</sup>	5.99
4	69.70	55.30	63.50 <sup>+0.13</sup>	5.99
5	67.31	52.68	61.10 <sup>+0.14</sup> <sub>-0.11</sub>	5.99

Shell size 1-4



Shell size 5



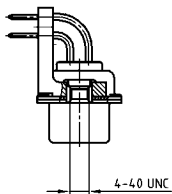
## ORDER DATA

### SOCKET CONNECTOR

Design	Mounting style 4-40 UNC	Part Number
5W1	Threaded insert	3 005W1SAT99N2 0 X
7W2	Threaded insert	3 007W2SAT99N20 X
11W1	Threaded insert	3 011W1SAT99N20 X
9W4	Threaded insert	3 009W4SAT99N20 X
13W3	Threaded insert	3 013W3SAT99N20 X
17W2	Threaded insert	3 017W2SAT99N20 X
21W1	Threaded insert	3 021W1SAT99N20 X
13W6	Threaded insert	3 013W6SAT99N20 X
17W5	Threaded insert	3 017W5SAT99N20 X
21WA4	Threaded insert	3 21WA4SAT99N20 X
25W3	Threaded insert	3 025W3SAT99N20 X
27W2	Threaded insert	3 027W2SAT99N20 X
24W7	Threaded insert	3 024W7SAT99N20 X
36W4	Threaded insert	3 036W4SAT99N20 X
43W2	Threaded insert	3 043W2SAT99N20 X
47W1	Threaded insert	3 047W1SAT99N20 X

### PLUG CONNECTOR

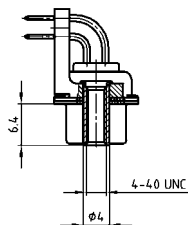
Design	Mounting style 4-40 UNC	Part Number
5W1	Threaded insert	3 005W1PAT99N20 X
7W2	Threaded insert	3 007W2PAT99N20 X
11W1	Threaded insert	3 011W1PAT99N20 X
9W4	Threaded insert	3 009W4PAT99N20 X
13W3	Threaded insert	3 013W3PAT99N20 X
17W2	Threaded insert	3 017W2PAT99N20 X
21W1	Threaded insert	3 021W1PAT99N20 X
13W6	Threaded insert	3 013W6PAT99N20 X
17W5	Threaded insert	3 017W5PAT99N20 X
21WA4	Threaded insert	3 21WA4PAT99N20 X
25W3	Threaded insert	3 025W3PAT99N20 X
27W2	Threaded insert	3 027W2PAT99N20 X
24W7	Threaded insert	3 024W7PAT99N20 X
36W4	Threaded insert	3 036W4PAT99N20 X
43W2	Threaded insert	3 043W2PAT99N20 X
47W1	Threaded insert	3 047W1PAT99N20 X



# COMBINATION D-SUB – MOUNTING STYLES

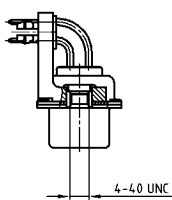
Solder pin – Angled – .318" / 7.19 mm – Precision machined contacts – Metal bracket

ORDER DATA



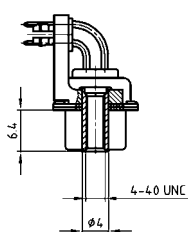
SOCKET CONNECTOR		
Design	Mounting style 4-40 UNC	Part Number
5W1	Front spacer	3 005W1SAT99P20 X
7W2	Front spacer	3 007W2SAT99P20 X
11W1	Front spacer	3 011W1SAT99P20 X
9W4	Front spacer	3 009W4SAT99P20 X
13W3	Front spacer	3 013W3SAT99P20 X
17W2	Front spacer	3 017W2SAT99P20 X
21W1	Front spacer	3 021W1SAT99P20 X
13W6	Front spacer	3 013W6SAT99P20 X
17W5	Front spacer	3 017W5SAT99P20 X
21WA4	Front spacer	3 21WA4SAT99P20 X
25W3	Front spacer	3 025W3SAT99P20 X
27W2	Front spacer	3 027W2SAT99P20 X
24W7	Front spacer	3 024W7SAT99P20 X
36W4	Front spacer	3 036W4SAT99P20 X
43W2	Front spacer	3 043W2SAT99P20 X
47W1	Front spacer	3 047W1SAT99P20 X

PLUG CONNECTOR		
Design	Mounting style 4-40 UNC	Part Number
5W1	Front spacer	3 005W1PAT99P20 X
7W2	Front spacer	3 007W2PAT99P20 X
11W1	Front spacer	3 011W1PAT99P20 X
9W4	Front spacer	3 009W4PAT99P20 X
13W3	Front spacer	3 013W3PAT99P20 X
17W2	Front spacer	3 017W2PAT99P20 X
21W1	Front spacer	3 021W1PAT99P20 X
13W6	Front spacer	3 013W6PAT99P20 X
17W5	Front spacer	3 017W5PAT99P20 X
21WA4	Front spacer	3 21WA4PAT99P20 X
25W3	Front spacer	3 025W3PAT99P20 X
27W2	Front spacer	3 027W2PAT99P20 X
24W7	Front spacer	3 024W7PAT99P20 X
36W4	Front spacer	3 036W4PAT99P20 X
43W2	Front spacer	3 043W2PAT99P20 X
47W1	Front spacer	3 047W1PAT99P20 X



SOCKET CONNECTOR		
Design	Mounting style 4-40 UNC	Part Number
5W1	Threaded insert/PCB clip	3 005W1SAT99N40 X
7W2	Threaded insert/PCB clip	3 007W2SAT99N40 X
11W1	Threaded insert/PCB clip	3 011W1SAT99N40 X
9W4	Threaded insert/PCB clip	3 009W4SAT99N40 X
13W3	Threaded insert/PCB clip	3 013W3SAT99N40 X
17W2	Threaded insert/PCB clip	3 017W2SAT99N40 X
21W1	Threaded insert/PCB clip	3 021W1SAT99N40 X
13W6	Threaded insert/PCB clip	3 013W6SAT99N40 X
17W5	Threaded insert/PCB clip	3 017W5SAT99N40 X
21WA4	Threaded insert/PCB clip	3 21WA4SAT99N40 X
25W3	Threaded insert/PCB clip	3 025W3SAT99N40 X
27W2	Threaded insert/PCB clip	3 027W2SAT99N40 X
24W7	Threaded insert/PCB clip	3 024W7SAT99N40 X
36W4	Threaded insert/PCB clip	3 036W4SAT99N40 X
43W2	Threaded insert/PCB clip	3 043W2SAT99N40 X
47W1	Threaded insert/PCB clip	3 047W1SAT99N40 X

PLUG CONNECTOR		
Design	Mounting style 4-40 UNC	Part Number
5W1	Threaded insert/PCB clip	3 005W1PAT99N40 X
7W2	Threaded insert/PCB clip	3 007W2PAT99N40 X
11W1	Threaded insert/PCB clip	3 011W1PAT99N40 X
9W4	Threaded insert/PCB clip	3 009W4PAT99N40 X
13W3	Threaded insert/PCB clip	3 013W3PAT99N40 X
17W2	Threaded insert/PCB clip	3 017W2PAT99N40 X
21W1	Threaded insert/PCB clip	3 021W1PAT99N40 X
13W6	Threaded insert/PCB clip	3 013W6PAT99N40 X
17W5	Threaded insert/PCB clip	3 017W5PAT99N40 X
21WA4	Threaded insert/PCB clip	3 21WA4PAT99N40 X
25W3	Threaded insert/PCB clip	3 025W3PAT99N40 X
27W2	Threaded insert/PCB clip	3 027W2PAT99N40 X
24W7	Threaded insert/PCB clip	3 024W7PAT99N40 X
36W4	Threaded insert/PCB clip	3 036W4PAT99N40 X
43W2	Threaded insert/PCB clip	3 043W2PAT99N40 X
47W1	Threaded insert/PCB clip	3 047W1PAT99N40 X



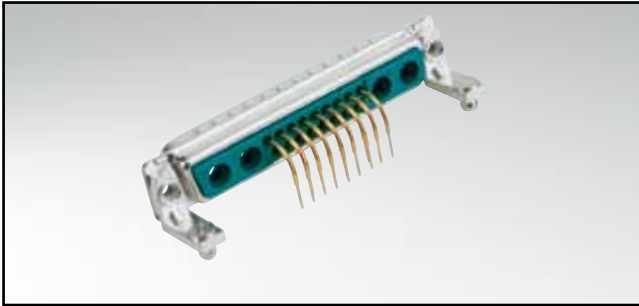
SOCKET CONNECTOR		
Design	Mounting style 4-40 UNC	Part Number
5W1	Front spacer/PCB clip	3 005W1SAT99P40 X
7W2	Front spacer/PCB clip	3 007W2SAT99P40 X
11W1	Front spacer/PCB clip	3 011W1SAT99P40 X
9W4	Front spacer/PCB clip	3 009W4SAT99P40 X
13W3	Front spacer/PCB clip	3 013W3SAT99P40 X
17W2	Front spacer/PCB clip	3 017W2SAT99P40 X
21W1	Front spacer/PCB clip	3 021W1SAT99P40 X
13W6	Front spacer/PCB clip	3 013W6SAT99P40 X
17W5	Front spacer/PCB clip	3 017W5SAT99P40 X
21WA4	Front spacer/PCB clip	3 21WA4SAT99P40 X
25W3	Front spacer/PCB clip	3 025W3SAT99P40 X
27W2	Front spacer/PCB clip	3 027W2SAT99P40 X
24W7	Front spacer/PCB clip	3 024W7SAT99P40 X
36W4	Front spacer/PCB clip	3 036W4SAT99P40 X
43W2	Front spacer/PCB clip	3 043W2SAT99P40 X
47W1	Front spacer/PCB clip	3 047W1SAT99P40 X

PLUG CONNECTOR		
Design	Mounting style 4-40 UNC	Part Number
5W1	Front spacer/PCB clip	3 005W1PAT99P40 X
7W2	Front spacer/PCB clip	3 007W2PAT99P40 X
11W1	Front spacer/PCB clip	3 011W1PAT99P40 X
9W4	Front spacer/PCB clip	3 009W4PAT99P40 X
13W3	Front spacer/PCB clip	3 013W3PAT99P40 X
17W2	Front spacer/PCB clip	3 017W2PAT99P40 X
21W1	Front spacer/PCB clip	3 021W1PAT99P40 X
13W6	Front spacer/PCB clip	3 013W6PAT99P40 X
17W5	Front spacer/PCB clip	3 017W5PAT99P40 X
21WA4	Front spacer/PCB clip	3 21WA4PAT99P40 X
25W3	Front spacer/PCB clip	3 025W3PAT99P40 X
27W2	Front spacer/PCB clip	3 027W2PAT99P40 X
24W7	Front spacer/PCB clip	3 024W7PAT99P40 X
36W4	Front spacer/PCB clip	3 036W4PAT99P40 X
43W2	Front spacer/PCB clip	3 043W2PAT99P40 X
47W1	Front spacer/PCB clip	3 047W1PAT99P40 X

PCB clip .122"/3.1 ± .004"/0.10 mm hole diameter and .063"/1.6 mm circuit board thickness

# COMBINATION D-SUB WITH SIGNAL CONTACTS

Solder pin – Angled – .370" / 9.4 mm – Precision machined contacts – Metal bracket

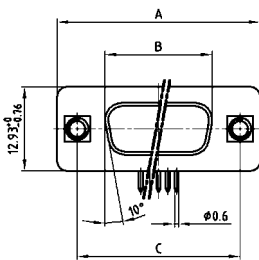


RoHS compliant – CSA listed, File No.: LR 115000-1 – UL listed, File No.: E 228329

## DESCRIPTION

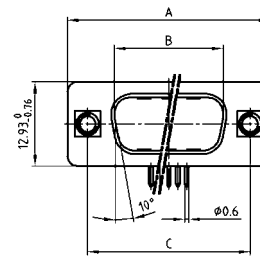
- Mounting styles:
  - with mounting bracket and threaded insert
  - with mounting bracket with 4-40 UNC front spacer
  - with mounting bracket, PCB clip and threaded insert
  - with mounting bracket, PCB clip and 4-40 UNC front spacer
- M3 thread design available on request
- Quality class 3 (also available in quality class 1)
- Shell: Steel tin plated (brass tin plated or stainless steel available on request)

## SOCKET CONNECTOR



Shell size	A -0.76	B -0.25	C
1	31.19	16.46	25.00 <sup>+0.12</sup> <sub>-0.13</sub>
2	39.52	24.79	33.30 <sup>+0.15</sup> <sub>-0.10</sub>
3	53.42	38.50	47.04 <sup>+0.13</sup>
4	69.70	54.96	63.50 <sup>+0.13</sup>
5	67.31	52.55	61.10 <sup>+0.14</sup> <sub>-0.11</sub>

## PLUG CONNECTOR



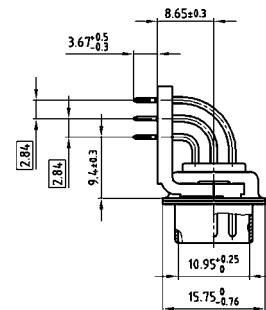
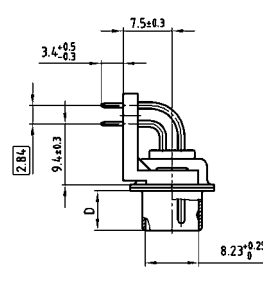
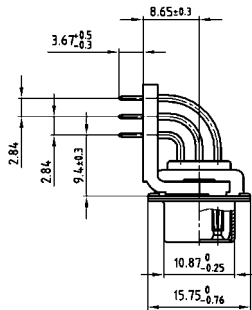
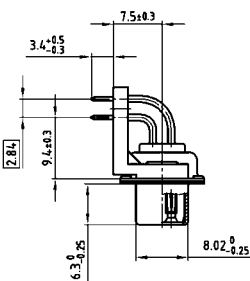
Shell size	A -0.76	B -0.25	C	D -0.30
1	31.19	16.79	25.00 <sup>+0.12</sup> <sub>-0.13</sub>	6.12
2	39.52	25.12	33.30 <sup>+0.15</sup> <sub>-0.10</sub>	6.12
3	53.42	38.84	47.04 <sup>+0.13</sup>	5.99
4	69.70	55.30	63.50 <sup>+0.13</sup>	5.99
5	67.31	52.68	61.10 <sup>+0.14</sup> <sub>-0.11</sub>	5.99

Shell size 1-4

Shell size 5

Shell size 1-4

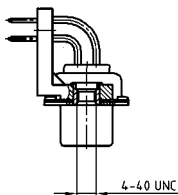
Shell size 5



## ORDER DATA

SOCKET CONNECTOR		
Design	Mounting style 4-40 UNC	Part Number
5W1	Threaded insert	3 005W1SAU99G20 X
7W2	Threaded insert	3 007W2SAU99G20 X
11W1	Threaded insert	3 011W1SAU99G20 X
9W4	Threaded insert	3 009W4SAU99G20 X
13W3	Threaded insert	3 013W3SAU99G20 X
17W2	Threaded insert	3 017W2SAU99G20 X
21W1	Threaded insert	3 021W1SAU99G20 X
13W6	Threaded insert	3 013W6SAU99G20 X
17W5	Threaded insert	3 017W5SAU99G20 X
21WA4	Threaded insert	3 21WA4SAU99G20 X
25W3	Threaded insert	3 025W3SAU99G20 X
27W2	Threaded insert	3 027W2SAU99G20 X
24W7	Threaded insert	3 024W7SAU99G20 X
36W4	Threaded insert	3 036W4SAU99G20 X
43W2	Threaded insert	3 043W2SAU99G20 X
47W1	Threaded insert	3 047W1SAU99G20 X

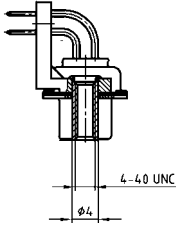
PLUG CONNECTOR		
Design	Mounting style 4-40 UNC	Part Number
5W1	Threaded insert	3 005W1PAU99G20 X
7W2	Threaded insert	3 007W2PAU99G20 X
11W1	Threaded insert	3 011W1PAU99G20 X
9W4	Threaded insert	3 009W4PAU99G20 X
13W3	Threaded insert	3 013W3PAU99G20 X
17W2	Threaded insert	3 017W2PAU99G20 X
21W1	Threaded insert	3 021W1PAU99G20 X
13W6	Threaded insert	3 013W6PAU99G20 X
17W5	Threaded insert	3 017W5PAU99G20 X
21WA4	Threaded insert	3 21WA4PAU99G20 X
25W3	Threaded insert	3 025W3PAU99G20 X
27W2	Threaded insert	3 027W2PAU99G20 X
24W7	Threaded insert	3 024W7PAU99G20 X
36W4	Threaded insert	3 036W4PAU99G20 X
43W2	Threaded insert	3 043W2PAU99G20 X
47W1	Threaded insert	3 047W1PAU99G20 X



# COMBINATION D-SUB – MOUNTING STYLES

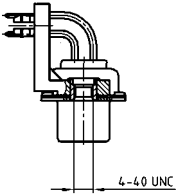
Solder pin – Angled – .370" / 9.4 mm – Precision machined contacts – Metal bracket

ORDER DATA



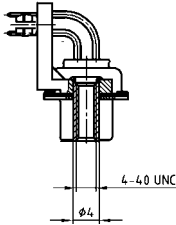
SOCKET CONNECTOR		
Design	Mounting style 4-40 UNC	Part Number
5W1	Front spacer	3 005W1SAU99H20 X
7W2	Front spacer	3 007W2SAU99H20 X
11W1	Front spacer	3 011W1SAU99H20 X
9W4	Front spacer	3 009W4SAU99H20 X
13W3	Front spacer	3 013W3SAU99H20 X
17W2	Front spacer	3 017W2SAU99H20 X
21W1	Front spacer	3 021W1SAU99H20 X
13W6	Front spacer	3 013W6SAU99H20 X
17W5	Front spacer	3 017W5SAU99H20 X
21WA4	Front spacer	3 21WA4SAU99H20 X
25W3	Front spacer	3 025W3SAU99H20 X
27W2	Front spacer	3 027W2SAU99H20 X
24W7	Front spacer	3 024W7SAU99H20 X
36W4	Front spacer	3 036W4SAU99H20 X
43W2	Front spacer	3 043W2SAU99H20 X
47W1	Front spacer	3 047W1SAU99H20 X

PLUG CONNECTOR		
Design	Mounting style 4-40 UNC	Part Number
5W1	Front spacer	3 005W1PAU99H20 X
7W2	Front spacer	3 007W2PAU99H20 X
11W1	Front spacer	3 011W1PAU99H20 X
9W4	Front spacer	3 009W4PAU99H20 X
13W3	Front spacer	3 013W3PAU99H20 X
17W2	Front spacer	3 017W2PAU99H20 X
21W1	Front spacer	3 021W1PAU99H20 X
13W6	Front spacer	3 013W6PAU99H20 X
17W5	Front spacer	3 017W5PAU99H20 X
21WA4	Front spacer	3 21WA4PAU99H20 X
25W3	Front spacer	3 025W3PAU99H20 X
27W2	Front spacer	3 027W2PAU99H20 X
24W7	Front spacer	3 024W7PAU99H20 X
36W4	Front spacer	3 036W4PAU99H20 X
43W2	Front spacer	3 043W2PAU99H20 X
47W1	Front spacer	3 047W1PAU99H20 X



SOCKET CONNECTOR		
Design	Mounting style 4-40 UNC	Part Number
5W1	Threaded insert / PCB clip	3 005W1SAU99G40 X
7W2	Threaded insert / PCB clip	3 007W2SAU99G40 X
11W1	Threaded insert / PCB clip	3 011W1SAU99G40 X
9W4	Threaded insert / PCB clip	3 009W4SAU99G40 X
13W3	Threaded insert / PCB clip	3 013W3SAU99G40 X
17W2	Threaded insert / PCB clip	3 017W2SAU99G40 X
21W1	Threaded insert / PCB clip	3 021W1SAU99G40 X
13W6	Threaded insert / PCB clip	3 013W6SAU99G40 X
17W5	Threaded insert / PCB clip	3 017W5SAU99G40 X
21WA4	Threaded insert / PCB clip	3 21WA4SAU99G40 X
25W3	Threaded insert / PCB clip	3 025W3SAU99G40 X
27W2	Threaded insert / PCB clip	3 027W2SAU99G40 X
24W7	Threaded insert / PCB clip	3 024W7SAU99G40 X
36W4	Threaded insert / PCB clip	3 036W4SAU99G40 X
43W2	Threaded insert / PCB clip	3 043W2SAU99G40 X
47W1	Threaded insert / PCB clip	3 047W1SAU99G40 X

PLUG CONNECTOR		
Design	Mounting style 4-40 UNC	Part Number
5W1	Threaded insert / PCB clip	3 005W1PAU99G40 X
7W2	Threaded insert / PCB clip	3 007W2PAU99G40 X
11W1	Threaded insert / PCB clip	3 011W1PAU99G40 X
9W4	Threaded insert / PCB clip	3 009W4PAU99G40 X
13W3	Threaded insert / PCB clip	3 013W3PAU99G40 X
17W2	Threaded insert / PCB clip	3 017W2PAU99G40 X
21W1	Threaded insert / PCB clip	3 021W1PAU99G40 X
13W6	Threaded insert / PCB clip	3 013W6PAU99G40 X
17W5	Threaded insert / PCB clip	3 017W5PAU99G40 X
21WA4	Threaded insert / PCB clip	3 21WA4PAU99G40 X
25W3	Threaded insert / PCB clip	3 025W3PAU99G40 X
27W2	Threaded insert / PCB clip	3 027W2PAU99G40 X
24W7	Threaded insert / PCB clip	3 024W7PAU99G40 X
36W4	Threaded insert / PCB clip	3 036W4PAU99G40 X
43W2	Threaded insert / PCB clip	3 043W2PAU99G40 X
47W1	Threaded insert / PCB clip	3 047W1PAU99G40 X



SOCKET CONNECTOR		
Design	Mounting style 4-40 UNC	Part Number
5W1	Front spacer / PCB clip	3 005W1SAU99H40 X
7W2	Front spacer / PCB clip	3 007W2SAU99H40 X
11W1	Front spacer / PCB clip	3 011W1SAU99H40 X
9W4	Front spacer / PCB clip	3 009W4SAU99H40 X
13W3	Front spacer / PCB clip	3 013W3SAU99H40 X
17W2	Front spacer / PCB clip	3 017W2SAU99H40 X
21W1	Front spacer / PCB clip	3 021W1SAU99H40 X
13W6	Front spacer / PCB clip	3 013W6SAU99H40 X
17W5	Front spacer / PCB clip	3 017W5SAU99H40 X
21WA4	Front spacer / PCB clip	3 21WA4SAU99H40 X
25W3	Front spacer / PCB clip	3 025W3SAU99H40 X
27W2	Front spacer / PCB clip	3 027W2SAU99H40 X
24W7	Front spacer / PCB clip	3 024W7SAU99H40 X
36W4	Front spacer / PCB clip	3 036W4SAU99H40 X
43W2	Front spacer / PCB clip	3 043W2SAU99H40 X
47W1	Front spacer / PCB clip	3 047W1SAU99H40 X

PLUG CONNECTOR		
Design	Mounting style 4-40 UNC	Part Number
5W1	Front spacer / PCB clip	3 005W1PAU99H40 X
7W2	Front spacer / PCB clip	3 007W2PAU99H40 X
11W1	Front spacer / PCB clip	3 011W1PAU99H40 X
9W4	Front spacer / PCB clip	3 009W4PAU99H40 X
13W3	Front spacer / PCB clip	3 013W3PAU99H40 X
17W2	Front spacer / PCB clip	3 017W2PAU99H40 X
21W1	Front spacer / PCB clip	3 021W1PAU99H40 X
13W6	Front spacer / PCB clip	3 013W6PAU99H40 X
17W5	Front spacer / PCB clip	3 017W5PAU99H40 X
21WA4	Front spacer / PCB clip	3 21WA4PAU99H40 X
25W3	Front spacer / PCB clip	3 025W3PAU99H40 X
27W2	Front spacer / PCB clip	3 027W2PAU99H40 X
24W7	Front spacer / PCB clip	3 024W7PAU99H40 X
36W4	Front spacer / PCB clip	3 036W4PAU99H40 X
43W2	Front spacer / PCB clip	3 043W2PAU99H40 X
47W1	Front spacer / PCB clip	3 047W1PAU99H40 X

PCB clip .122" / 3.1 ± .004" / 0.10 mm hole diameter and .063" / 1.6 mm circuit board thickness



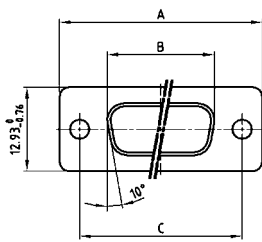
# COMBINATION D-SUB WITHOUT CONTACTS

For straight high power, coaxial or high voltage contacts



RoHS compliant – CSA listed, File No.: LR 115000-1 – UL listed, File No.: E 228329

## SOCKET CONNECTOR



Shell size	A -0.76	B -0.25	C
1	31.19	16.46	25.00 <sup>+0.12</sup> / <sub>-0.13</sub>
2	39.52	24.79	33.30 <sup>+0.15</sup> / <sub>-0.10</sub>
3	53.42	38.50	47.04 <sup>+0.13</sup> / <sub>-0.10</sub>
4	69.70	54.96	63.50 <sup>+0.13</sup> / <sub>-0.10</sub>

## DESCRIPTION

- Designs: 2W2C; 3W3; 3W3C; 5W5; 8W8
- Mounting styles:
  - with through-hole, Ø .118"/3 mm
  - with 4-40 UNC threaded insert
  - with 4-40 UNC threaded rear spacer
  - with 4-40 UNC threaded rear spacer with PCB clip .291"/7.4 mm for PCB thickness .063"/1.6 mm, .091"/2.3 mm, .126"/3.2 mm
- On request: Threaded rear spacer with PCB clip .256"/6.5 mm available
- On request: M3 thread design available
- Shell: Steel tin plated (brass tin plated or stainless steel available on request)

## PLUG CONNECTOR

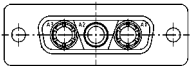


Shell size	A -0.76	B -0.25	C	D -0.30
1	31.19	16.79	25.00 <sup>+0.12</sup> / <sub>-0.13</sub>	6.12
2	39.52	25.12	33.30 <sup>+0.15</sup> / <sub>-0.10</sub>	6.12
3	53.42	38.84	47.04 <sup>+0.13</sup> / <sub>-0.10</sub>	5.99
4	69.70	55.30	63.50 <sup>+0.13</sup> / <sub>-0.10</sub>	5.99

## Coded socket connectors

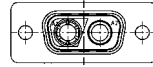


2W2C = 1 Socket – 1 Plug



3W3C = 2 Sockets – 1 Plug

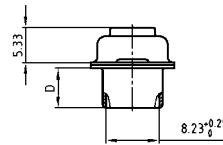
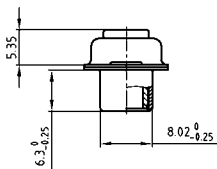
## Coded plug connectors



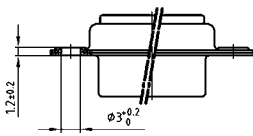
2W2C = 1 Plug – 1 Socket



3W3C = 2 Plugs – 1 Socket

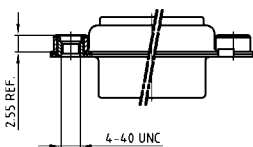


## ORDER DATA



SOCKET CONNECTOR			
Design	Mounting style	Part Number	
3W3	Through-hole	3 003W3SXX99A10	X
5W5	Through-hole	3 005W5SXX99A10	X
8W8	Through-hole	3 008W8SXX99A10	X
Coded version			
2W2C	Through-hole	3 02W2CSXX99A10	X
3W3C	Through-hole	3 03W3CSXX99A10	X

PLUG CONNECTOR			
Design	Mounting style	Part Number	
3W3	Through-hole	3 003W3PXX99A10	X
5W5	Through-hole	3 005W5PXX99A10	X
8W8	Through-hole	3 008W8PXX99A10	X
Coded version			
2W2C	Through-hole	3 02W2CPXX99A10	X
3W3C	Through-hole	3 03W3CPXX99A10	X



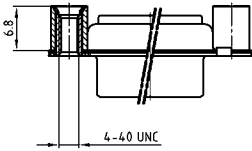
SOCKET CONNECTOR			
Design	Mounting style 4-40 UNC	Part Number	
3W3	Threaded insert	3 003W3SXX99A30	X
5W5	Threaded insert	3 005W5SXX99A30	X
8W8	Threaded insert	3 008W8SXX99A30	X
Coded version			
2W2C	Threaded insert	3 02W2CSXX99A30	X
3W3C	Threaded insert	3 03W3CSXX99A30	X

PLUG CONNECTOR			
Design	Mounting style 4-40 UNC	Part Number	
3W3	Threaded insert	3 003W3PXX99A30	X
5W5	Threaded insert	3 005W5PXX99A30	X
8W8	Threaded insert	3 008W8PXX99A30	X
Coded version			
2W2C	Threaded insert	3 02W2CPXX99A30	X
3W3C	Threaded insert	3 03W3CPXX99A30	X

# COMBINATION D-SUB – MOUNTING STYLES

For straight high power, coaxial or high voltage contacts

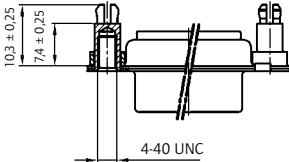
**ORDER DATA**



SOCKET CONNECTOR			
Design	Mounting style 4-40 UNC	Part Number	
3W3	Threaded rear spacer	3 003W3SXX99A50	X
5W5	Threaded rear spacer	3 005W5SXX99A50	X
8W8	Threaded rear spacer	3 008W8SXX99A50	X
Coded version			
2W2C	Threaded rear spacer	3 02W2CSXX99A50	X
3W3C	Threaded rear spacer	3 03W3CSXX99A50	X

PLUG CONNECTOR			
Design	Mounting style 4-40 UNC	Part Number	
3W3	Threaded rear spacer	3 003W3PXX99A50	X
5W5	Threaded rear spacer	3 005W5PXX99A50	X
8W8	Threaded rear spacer	3 008W8PXX99A50	X
Coded version			
2W2C	Threaded rear spacer	3 02W2CPXX99A50	X
3W3C	Threaded rear spacer	3 03W3CPXX99A50	X

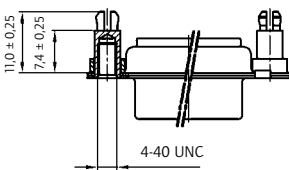
PCB thickness .063" / 1.6 mm



SOCKET CONNECTOR			
Design	Mounting style 4-40 UNC	Part Number	
3W3	Threaded rear spacer PCB clip	3 003W3SXX99E20	X
5W5	Threaded rear spacer PCB clip	3 005W5SXX99E20	X
8W8	Threaded rear spacer PCB clip	3 008W8SXX99E20	X
Coded version			
2W2C	Threaded rear spacer PCB clip	3 02W2CSXX99E20	X
3W3C	Threaded rear spacer PCB clip	3 03W3CSXX99E20	X

PLUG CONNECTOR			
Design	Mounting style 4-40 UNC	Part Number	
3W3	Threaded rear spacer PCB clip	3 003W3PXX99E20	X
5W5	Threaded rear spacer PCB clip	3 005W5PXX99E20	X
8W8	Threaded rear spacer PCB clip	3 008W8PXX99E20	X
Coded version			
2W2C	Threaded rear spacer PCB clip	3 02W2CPXX99E20	X
3W3C	Threaded rear spacer PCB clip	3 03W3CPXX99E20	X

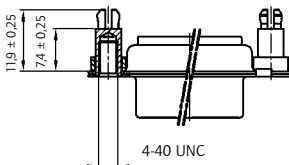
PCB thickness .091" / 2.3 mm



SOCKET CONNECTOR			
Design	Mounting style 4-40 UNC	Part Number	
3W3	Threaded rear spacer PCB clip	3 003W3SXX99E40	X
5W5	Threaded rear spacer PCB clip	3 005W5SXX99E40	X
8W8	Threaded rear spacer PCB clip	3 008W8SXX99E40	X
Coded version			
2W2C	Threaded rear spacer PCB clip	3 02W2CSXX99E40	X
3W3C	Threaded rear spacer PCB clip	3 03W3CSXX99E40	X

PLUG CONNECTOR			
Design	Mounting style 4-40 UNC	Part Number	
3W3	Threaded rear spacer PCB clip	3 003W3PXX99E40	X
5W5	Threaded rear spacer PCB clip	3 005W5PXX99E40	X
8W8	Threaded rear spacer PCB clip	3 008W8PXX99E40	X
Coded version			
2W2C	Threaded rear spacer PCB clip	3 02W2CPXX99E40	X
3W3C	Threaded rear spacer PCB clip	3 03W3CPXX99E40	X

PCB thickness .126" / 3.2 mm



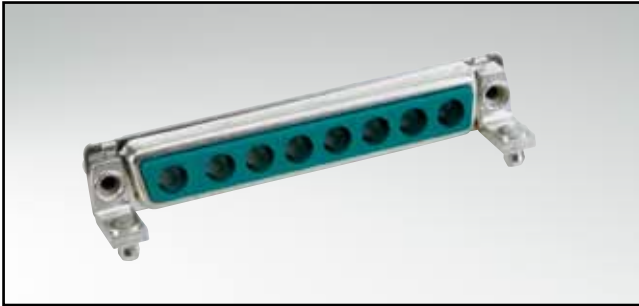
SOCKET CONNECTOR			
Design	Mounting style 4-40 UNC	Part Number	
3W3	Threaded rear spacer PCB clip	3 003W3SXX99E60	X
5W5	Threaded rear spacer PCB clip	3 005W5SXX99E60	X
8W8	Threaded rear spacer PCB clip	3 008W8SXX99E60	X
Coded version			
2W2C	Threaded rear spacer PCB clip	3 02W2CSXX99E60	X
3W3C	Threaded rear spacer PCB clip	3 03W3CSXX99E60	X

PLUG CONNECTOR			
Design	Mounting style 4-40 UNC	Part Number	
3W3	Threaded rear spacer PCB clip	3 003W3PXX99E60	X
5W5	Threaded rear spacer PCB clip	3 005W5PXX99E60	X
8W8	Threaded rear spacer PCB clip	3 008W8PXX99E60	X
Coded version			
2W2C	Threaded rear spacer PCB clip	3 02W2CPXX99E60	X
3W3C	Threaded rear spacer PCB clip	3 03W3CPXX99E60	X

PCB clip .122" ^a3.1 ± .004" ^a0.10 mm hole diameter

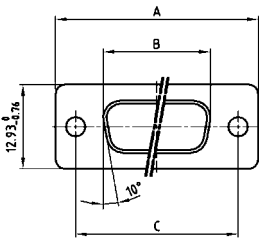
# COMBINATION D-SUB WITHOUT CONTACTS

For angled high power or coaxial contacts – Short metal bracket



RoHS compliant – CSA listed, File No.: LR 115000-1 – UL listed, File No.: E 228329

## SOCKET CONNECTOR

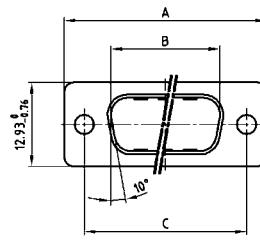


Shell size	A -0.76	B -0.25	C
1	31.19	16.46	25.00 <sup>+0.12</sup> / <sub>-0.13</sub>
2	39.52	24.79	33.30 <sup>+0.15</sup> / <sub>-0.10</sub>
3	53.42	38.50	47.04 <sup>+0.13</sup> / <sub>-0.10</sub>
4	69.70	54.96	63.50 <sup>+0.13</sup> / <sub>-0.10</sub>

## DESCRIPTION

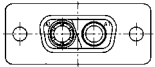
- Designs: 2W2C; 3W3; 3W3C; 5W5; 8W8
- Mounting styles:
  - Mounting bracket and 4-40 UNC threaded insert
  - Mounting bracket with 4-40 UNC front spacer
  - Mounting bracket, PCB clip and 4-40 UNC threaded insert
  - Mounting bracket, PCB clip and 4-40 UNC front spacer
- M3 thread design available on request
- Shell: Steel tin plated (brass tin plated or stainless steel available on request)

## PLUG CONNECTOR

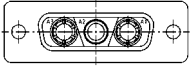


Shell size	A -0.76	B +0.25	C	D -0.30
1	31.19	16.79	25.00 <sup>+0.12</sup> / <sub>-0.13</sub>	6.12
2	39.52	25.12	33.30 <sup>+0.15</sup> / <sub>-0.10</sub>	6.12
3	53.42	38.84	47.04 <sup>+0.13</sup> / <sub>-0.10</sub>	5.99
4	69.70	55.30	63.50 <sup>+0.13</sup> / <sub>-0.10</sub>	5.99

### Coded socket connectors

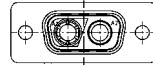


2W2C = 1 Socket – 1 Plug

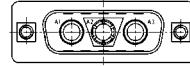


3W3C = 2 Sockets – 1 Plug

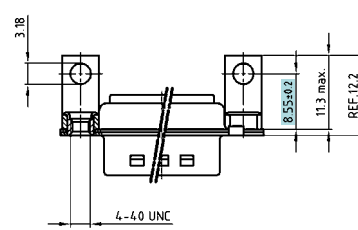
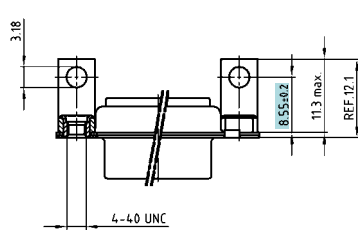
### Coded plug connectors



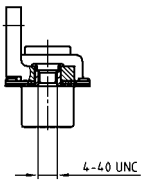
2W2C = 1 Plug – 1 Socket



3W3C = 2 Plugs – 1 Socket



## ORDER DATA



### SOCKET CONNECTOR

Design	Mounting style 4-40 UNC	Part Number
3W3	Threaded insert	3 003W3SXX99N20 X
5W5	Threaded insert	3 005W5SXX99N20 X
8W8	Threaded insert	3 008W8SXX99N20 X
Coded version		
2W2C	Threaded insert	3 02W2CSXX99N20 X
3W3C	Threaded insert	3 03W3CSXX99N20 X

### PLUG CONNECTOR

Design	Mounting style 4-40 UNC	Part Number
3W3	Threaded insert	3 003W3PXX99N20 X
5W5	Threaded insert	3 005W5PXX99N20 X
8W8	Threaded insert	3 008W8PXX99N20 X
Coded version		
2W2C	Threaded insert	3 02W2CPXX99N20 X
3W3C	Threaded insert	3 03W3CPXX99N20 X

# COMBINATION D-SUB – MOUNTING STYLES

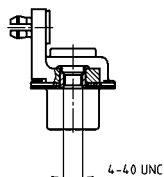
For angled high power or coaxial contacts – Short metal bracket

ORDER DATA



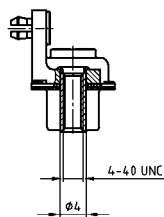
SOCKET CONNECTOR		
Design	Mounting style 4-40 UNC	Part Number
3W3	Front spacer	3 003W3SXX99P20 X
5W5	Front spacer	3 005W5SXX99P20 X
8W8	Front spacer	3 008W8SXX99P20 X
Coded version		
2W2C	Front spacer	3 02W2CSXX99P20 X
3W3C	Front spacer	3 03W3CSXX99P20 X

PLUG CONNECTOR		
Design	Mounting style 4-40 UNC	Part Number
3W3	Front spacer	3 003W3PXX99P20 X
5W5	Front spacer	3 005W5PXX99P20 X
8W8	Front spacer	3 008W8PXX99P20 X
Coded version		
2W2C	Front spacer	3 02W2CPXX99P20 X
3W3C	Front spacer	3 03W3CPXX99P20 X



SOCKET CONNECTOR		
Design	Mounting style 4-40 UNC	Part Number
3W3	Threaded insert / PCB clip	3 003W3SXX99N40 X
5W5	Threaded insert / PCB clip	3 005W5SXX99N40 X
8W8	Threaded insert / PCB clip	3 008W8SXX99N40 X
Coded version		
2W2C	Threaded insert / PCB clip	3 02W2CSXX99N40 X
3W3C	Threaded insert / PCB clip	3 03W3CSXX99N40 X

PLUG CONNECTOR		
Design	Mounting style 4-40 UNC	Part Number
3W3	Threaded insert / PCB clip	3 003W3PXX99N40 X
5W5	Threaded insert / PCB clip	3 005W5PXX99N40 X
8W8	Threaded insert / PCB clip	3 008W8PXX99N40 X
Coded version		
2W2C	Threaded insert / PCB clip	3 02W2CPXX99N40 X
3W3C	Threaded insert / PCB clip	3 03W3CPXX99N40 X



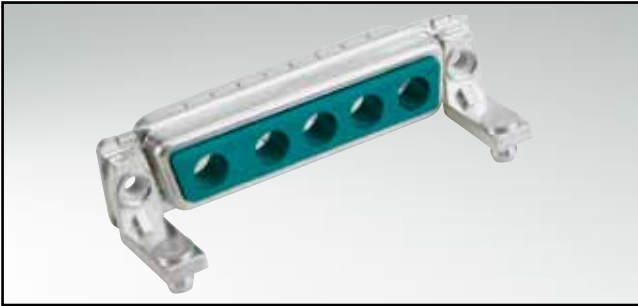
SOCKET CONNECTOR		
Design	Mounting style 4-40 UNC	Part Number
3W3	Front spacer / PCB clip	3 003W3SXX99P40 X
5W5	Front spacer / PCB clip	3 005W5SXX99P40 X
8W8	Front spacer / PCB clip	3 008W8SXX99P40 X
Coded version		
2W2C	Front spacer / PCB clip	3 02W2CSXX99P40 X
3W3C	Front spacer / PCB clip	3 03W3CSXX99P40 X

PLUG CONNECTOR		
Design	Mounting style 4-40 UNC	Part Number
3W3	Front spacer / PCB clip	3 003W3PXX99P40 X
5W5	Front spacer / PCB clip	3 005W5PXX99P40 X
8W8	Front spacer / PCB clip	3 008W8PXX99P40 X
Coded version		
2W2C	Front spacer / PCB clip	3 02W2CPXX99P40 X
3W3C	Front spacer / PCB clip	3 03W3CPXX99P40 X

PCB clip .122"/3.1 ± .004"/0.10 mm hole diameter and .063"/1.6 mm circuit board thickness

# COMBINATION D-SUB WITHOUT CONTACTS

For angled high power or coaxial contacts – Long metal bracket

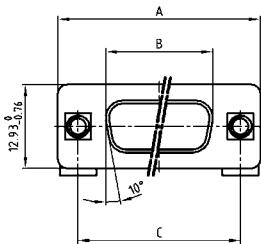


RoHS compliant – CSA listed, File No.: LR 115000-1-UL listed, File No.: E 228329

## DESCRIPTION

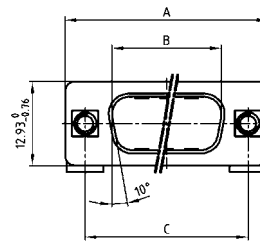
- Designs: 2W2C; 3W3; 3W3C; 5W5; 8W8
- Mounting styles:
  - with mounting bracket and 4-40 UNC threaded insert
  - with mounting bracket with 4-40 UNC front spacer
  - with mounting bracket, PCB clip and 4-40 UNC threaded insert
  - with mounting bracket, PCB clip and 4-40 UNC front spacer
- M3 thread design available on request
- Shell: Steel tin plated (brass tin plated or stainless steel available on request)

## SOCKET CONNECTOR



Shell size	A -0.76	B -0.25	C
1	31.19	16.46	25.00 <sup>+0.12</sup> / <sub>-0.13</sub>
2	39.52	24.79	33.30 <sup>+0.15</sup> / <sub>-0.10</sub>
3	53.42	38.50	47.04 <sup>+0.13</sup>
4	69.70	54.96	63.50 <sup>+0.13</sup>

## PLUG CONNECTOR

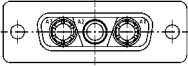


Shell size	A -0.76	B +0.25	C	D -0.30
1	31.19	16.79	25.00 <sup>+0.12</sup> / <sub>-0.13</sub>	6.12
2	39.52	25.12	33.30 <sup>+0.15</sup> / <sub>-0.10</sub>	6.12
3	53.42	38.84	47.04 <sup>+0.13</sup>	5.99
4	69.70	55.30	63.50 <sup>+0.13</sup>	5.99

## Coded socket connectors

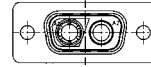


2W2C = 1 Socket – 1 Plug

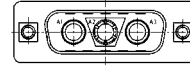


3W3C = 2 Sockets – 1 Plug

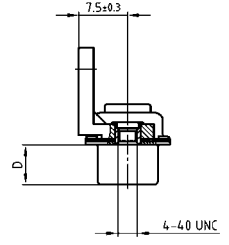
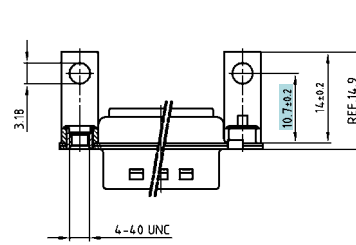
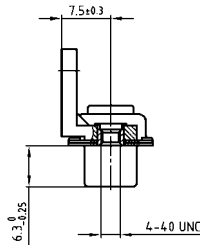
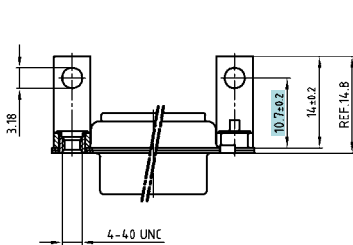
## Coded plug connectors



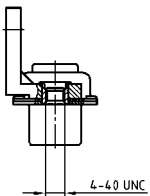
2W2C = 1 Plug – 1 Socket



3W3C = 2 Plugs – 1 Socket



## ORDER DATA



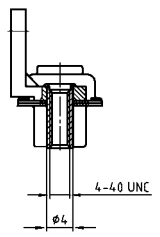
SOCKET CONNECTOR		
Design	Mounting style 4-40 UNC	Part Number
3W3	Threaded insert	3 003W3SXX99G20 X
5W5	Threaded insert	3 005W5SXX99G20 X
8W8	Threaded insert	3 008W8SXX99G20 X
Coded version		
2W2C	Threaded insert	3 02W2CSXX99G20 X
3W3C	Threaded insert	3 03W3CSXX99G20 X

PLUG CONNECTOR		
Design	Mounting style 4-40 UNC	Part Number
3W3	Threaded insert	3 003W3PXX99G20 X
5W5	Threaded insert	3 005W5PXX99G20 X
8W8	Threaded insert	3 008W8PXX99G20 X
Coded version		
2W2C	Threaded insert	3 02W2CPXX99G20 X
3W3C	Threaded insert	3 03W3CPXX99G20 X

# COMBINATION D-SUB – MOUNTING STYLES

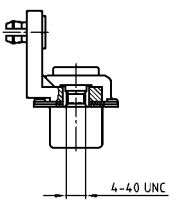
For angled high power or coaxial contacts – Long metal bracket

**ORDER DATA**



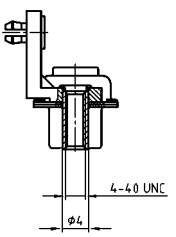
SOCKET CONNECTOR		
Design	Mounting style 4-40 UNC	Part Number
3W3	Front spacer	3 003W3SXX99H20 X
5W5	Front spacer	3 005W5SXX99H20 X
8W8	Front spacer	3 008W8SXX99H20 X
Coded version		
2W2C	Front spacer	3 02W2CSXX99H20 X
3W3C	Front spacer	3 03W3CSXX99H20 X

PLUG CONNECTOR		
Design	Mounting style 4-40 UNC	Part Number
3W3	Front spacer	3 003W3PXX99H20 X
5W5	Front spacer	3 005W5PXX99H20 X
8W8	Front spacer	3 008W8PXX99H20 X
Coded version		
2W2C	Front spacer	3 02W2CPXX99H20 X
3W3C	Front spacer	3 03W3CPXX99H20 X



SOCKET CONNECTOR		
Design	Mounting style 4-40 UNC	Part Number
3W3	Threaded insert/PCB clip	3 003W3SXX99G40 X
5W5	Threaded insert/PCB clip	3 005W5SXX99G40 X
8W8	Threaded insert/PCB clip	3 008W8SXX99G40 X
Coded version		
2W2C	Threaded insert/PCB clip	3 02W2CSXX99G40 X
3W3C	Threaded insert/PCB clip	3 03W3CSXX99G40 X

PLUG CONNECTOR		
Design	Mounting style 4-40 UNC	Part Number
3W3	Threaded insert/PCB clip	3 003W3PXX99G40 X
5W5	Threaded insert/PCB clip	3 005W5PXX99G40 X
8W8	Threaded insert/PCB clip	3 008W8PXX99G40 X
Coded version		
2W2C	Threaded insert/PCB clip	3 02W2CPXX99G40 X
3W3C	Threaded insert/PCB clip	3 03W3CPXX99G40 X



SOCKET CONNECTOR		
Design	Mounting style 4-40 UNC	Part Number
3W3	Front spacer/PCB clip	3 003W3SXX99H40 X
5W5	Front spacer/PCB clip	3 005W5SXX99H40 X
8W8	Front spacer/PCB clip	3 008W8SXX99H40 X
Coded version		
2W2C	Front spacer/PCB clip	3 02W2CSXX99H40 X
3W3C	Front spacer/PCB clip	3 03W3CSXX99H40 X

PLUG CONNECTOR		
Design	Mounting style 4-40 UNC	Part Number
3W3	Front spacer/PCB clip	3 003W3PXX99H40 X
5W5	Front spacer/PCB clip	3 005W5PXX99H40 X
8W8	Front spacer/PCB clip	3 008W8PXX99H40 X
Coded version		
2W2C	Front spacer/PCB clip	3 02W2CPXX99H40 X
3W3C	Front spacer/PCB clip	3 03W3CPXX99H40 X

PCB clip .122"/3.1 ± .004"/0.10 mm hole diameter and .063"/1.6 mm circuit board thickness

# COMBINATION D-SUB

Crimp body (without contacts) – For wire size AWG 20...24 and AWG 26...28

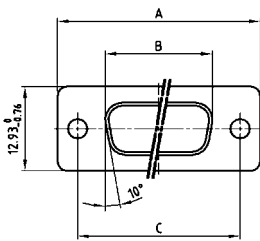


RoHS compliant – CSA listed, File No.: LR 115000-1 – UL listed, File No.: E 228329

## DESCRIPTION

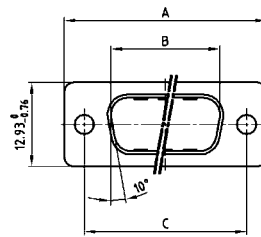
- For precision machined contacts for wire size AWG 20...24 and AWG 26...28
- Mounting styles:
  - with through-hole,  $\varnothing .118'' / 3 \text{ mm}$
  - with 4-40 UNC or M3 threaded insert
- Shell: Steel tin plated (brass tin plated or stainless steel available on request)

## SOCKET CONNECTOR

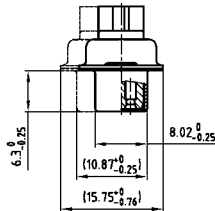
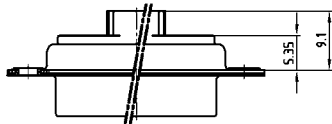


Shell size	A -0.76	B -0.25	C
1	31.19	16.46	25.00 $^{+0.12}_{-0.13}$
2	39.52	24.79	33.30 $^{+0.15}_{-0.10}$
3	53.42	38.50	47.04 $^{+0.13}$
4	69.70	54.96	63.50 $^{+0.13}$
5	67.31	52.55	61.10 $^{+0.14}_{-0.11}$

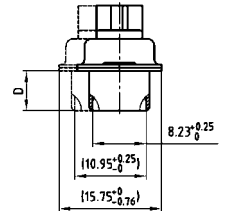
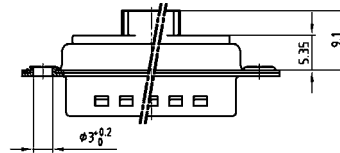
## PLUG CONNECTOR



Shell size	A -0.76	B +0.25	C	D -0.30
1	31.19	16.79	25.00 $^{+0.12}_{-0.13}$	6.12
2	39.52	25.12	33.30 $^{+0.15}_{-0.10}$	6.12
3	53.42	38.84	47.04 $^{+0.13}$	5.99
4	69.70	55.30	63.50 $^{+0.13}$	5.99
5	67.31	52.68	61.10 $^{+0.14}_{-0.11}$	5.99

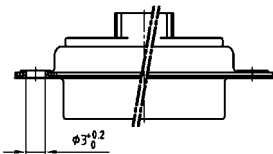


Shell size 5 = Dim. in (.)



Shell size 5 = Dim. in (.)

## ORDER DATA



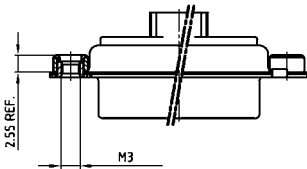
SOCKET CONNECTOR		
Design	Mounting style	Part Number
5W1	Through-hole	3 005W1SXK99A10 X
7W2	Through-hole	3 007W2SXK99A10 X
11W1	Through-hole	3 011W1SXK99A10 X
9W4	Through-hole	3 009W4SXK99A10 X
13W3	Through-hole	3 013W3SXK99A10 X
17W2	Through-hole	3 017W2SXK99A10 X
21W1	Through-hole	3 021W1SXK99A10 X
13W6	Through-hole	3 013W6SXK99A10 X
17W5	Through-hole	3 017W5SXK99A10 X
21WA4	Through-hole	3 21WA4SXK99A10 X
25W3	Through-hole	3 025W3SXK99A10 X
27W2	Through-hole	3 027W2SXK99A10 X
24W7	Through-hole	3 024W7SXK99A10 X
36W4	Through-hole	3 036W4SXK99A10 X
43W2	Through-hole	3 043W2SXK99A10 X
47W1	Through-hole	3 047W1SXK99A10 X

Plug connector		
Design	Mounting style	Part Number
5W1	Through-hole	3 005W1PXX99A10 X
7W2	Through-hole	3 007W2PXX99A10 X
11W1	Through-hole	3 011W1PXX99A10 X
9W4	Through-hole	3 009W4PXX99A10 X
13W3	Through-hole	3 013W3PXX99A10 X
17W2	Through-hole	3 017W2PXX99A10 X
21W1	Through-hole	3 021W1PXX99A10 X
13W6	Through-hole	3 013W6PXX99A10 X
17W5	Through-hole	3 017W5PXX99A10 X
21WA4	Through-hole	3 21WA4PXX99A10 X
25W3	Through-hole	3 025W3PXX99A10 X
27W2	Through-hole	3 027W2PXX99A10 X
24W7	Through-hole	3 024W7PXX99A10 X
36W4	Through-hole	3 036W4PXX99A10 X
43W2	Through-hole	3 043W2PXX99A10 X
47W1	Through-hole	3 047W1PXX99A10 X

# COMBINATION D-SUB – MOUNTING STYLES

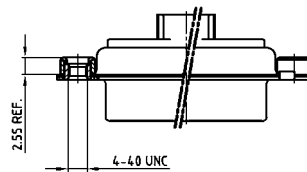
Crimp body (without contacts) – For wire size AWG 20...24 and AWG 26...28

## ORDER DATA



SOCKET CONNECTOR		
Design	Mounting style M3	Part Number
5W1	Threaded insert	3 005W1S XK99A20 X
7W2	Threaded insert	3 007W2S XK99A20 X
11W1	Threaded insert	3 011W1S XK99A20 X
9W4	Threaded insert	3 009W4S XK99A20 X
13W3	Threaded insert	3 013W3S XK99A20 X
17W2	Threaded insert	3 017W2S XK99A20 X
21W1	Threaded insert	3 021W1S XK99A20 X
13W6	Threaded insert	3 013W6S XK99A20 X
17W5	Threaded insert	3 017W5S XK99A20 X
21WA4	Threaded insert	3 21WA4S XK99A20 X
25W3	Threaded insert	3 025W3S XK99A20 X
27W2	Threaded insert	3 027W2S XK99A20 X
24W7	Threaded insert	3 024W7S XK99A20 X
36W4	Threaded insert	3 036W4S XK99A20 X
43W2	Threaded insert	3 043W2S XK99A20 X
47W1	Threaded insert	3 047W1S XK99A20 X

Plug connector		
Design	Mounting style M3	Part Number
5W1	Threaded insert	3 005W1P XK99A20 X
7W2	Threaded insert	3 007W2P XK99A20 X
11W1	Threaded insert	3 011W1P XK99A20 X
9W4	Threaded insert	3 009W4P XK99A20 X
13W3	Threaded insert	3 013W3P XK99A20 X
17W2	Threaded insert	3 017W2P XK99A20 X
21W1	Threaded insert	3 021W1P XK99A20 X
13W6	Threaded insert	3 013W6P XK99A20 X
17W5	Threaded insert	3 017W5P XK99A20 X
21WA4	Threaded insert	3 21WA4P XK99A20 X
25W3	Threaded insert	3 025W3P XK99A20 X
27W2	Threaded insert	3 027W2P XK99A20 X
24W7	Threaded insert	3 024W7P XK99A20 X
36W4	Threaded insert	3 036W4P XK99A20 X
43W2	Threaded insert	3 043W2P XK99A20 X
47W1	Threaded insert	3 047W1P XK99A20 X



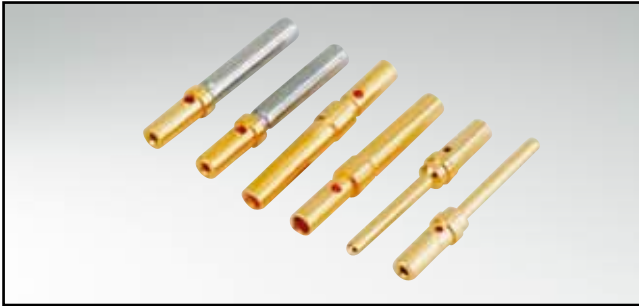
SOCKET CONNECTOR		
Design	Mounting style 4-40 UNC	Part Number
5W1	Threaded insert	3 005W1S XK99A30 X
7W2	Threaded insert	3 007W2S XK99A30 X
11W1	Threaded insert	3 011W1S XK99A30 X
9W4	Threaded insert	3 009W4S XK99A30 X
13W3	Threaded insert	3 013W3S XK99A30 X
17W2	Threaded insert	3 017W2S XK99A30 X
21W1	Threaded insert	3 021W1S XK99A30 X
13W6	Threaded insert	3 013W6S XK99A30 X
17W5	Threaded insert	3 017W5S XK99A30 X
21WA4	Threaded insert	3 21WA4S XK99A30 X
25W3	Threaded insert	3 025W3S XK99A30 X
27W2	Threaded insert	3 027W2S XK99A30 X
24W7	Threaded insert	3 024W7S XK99A30 X
36W4	Threaded insert	3 036W4S XK99A30 X
43W2	Threaded insert	3 043W2S XK99A30 X
47W1	Threaded insert	3 047W1S XK99A30 X

Plug connector		
Design	Mounting style 4-40 UNC	Part Number
5W1	Threaded insert	3 005W1P XK99A30 X
7W2	Threaded insert	3 007W2P XK99A30 X
11W1	Threaded insert	3 011W1P XK99A30 X
9W4	Threaded insert	3 009W4P XK99A30 X
13W3	Threaded insert	3 013W3P XK99A30 X
17W2	Threaded insert	3 017W2P XK99A30 X
21W1	Threaded insert	3 021W1P XK99A30 X
13W6	Threaded insert	3 013W6P XK99A30 X
17W5	Threaded insert	3 017W5P XK99A30 X
21WA4	Threaded insert	3 21WA4P XK99A30 X
25W3	Threaded insert	3 025W3P XK99A30 X
27W2	Threaded insert	3 027W2P XK99A30 X
24W7	Threaded insert	3 024W7P XK99A30 X
36W4	Threaded insert	3 036W4P XK99A30 X
43W2	Threaded insert	3 043W2P XK99A30 X
47W1	Threaded insert	3 047W1P XK99A30 X



# COMBINATION D-SUB CONTACTS

Crimp contacts – Precision machined – For wire size AWG 20...24 and AWG 26...28



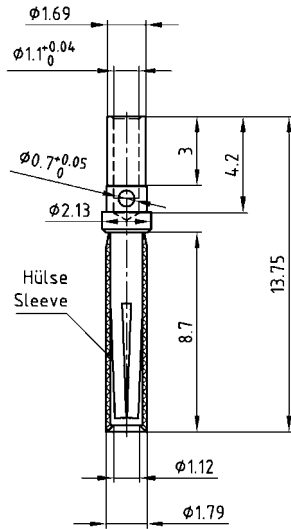
RoHS compliant – CSA listed, File No.: LR 115000-1 – UL listed, File No.: E 228329

## DESCRIPTION

- For wire size AWG 20...24 and AWG 26-28
- Quality class 3, quality class 1 also available
- Other quality classes on request

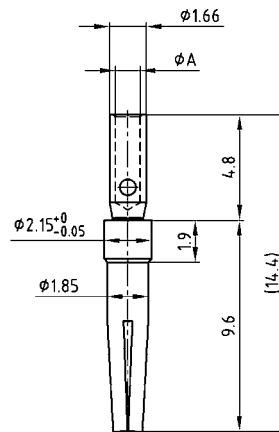
## PRODUCT DRAWING

Signal socket crimp contact  
(Closed entry version)

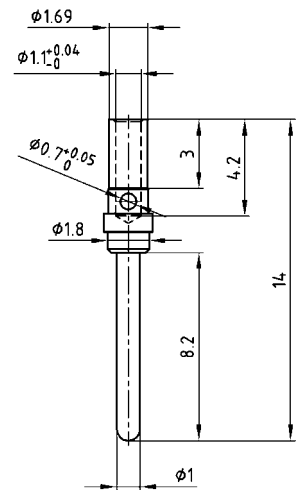


AWG	A +0.04
20-24	Ø 1.16
26-28	Ø 0.65

Signal socket crimp contact  
(Standard version)



Signal plug crimp contact  
(Standard version)



## Designs

Contact material Socket	Copper alloy
Closed entry version	Stainless steel sleeve
Contact material plug	Brass
Quality class 1	500 mating cycles
Quality class 3	50 mating cycles

## ORDER DATA

SOCKET CONTACT			
Contact type	AWG	Quality class	Part Number
Socket* / Closed entry	20...24	1	132 C 15019 X
Socket* / Closed entry	26...28	1	132 C 15029 X
Socket / Standard	20...24	3	162 A 18709 X
Socket / Standard	26...28	3	162 A 18179 X

\*Preferred type

PLUG CONTACT			
Contact type	AWG	Quality class	Part Number
Plug / Standard	20...24	1	131 C 15019 X
Plug / Standard	26...28	1	131 C 15029 X
Plug / Standard	20...24	3	131 A 15019 X
Plug / Standard	26...28	3	131 A 15029 X

# COMBINATION D-SUB CONTACTS

## High power contacts – Solder cup – Straight



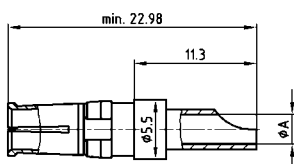
RoHS compliant – CSA listed, File No.: LR 115000-1 – UL listed, File No.: E 228329

### DESCRIPTION

- Precision machined contacts
- Quality class 3: 50 mating cycles (gold plated)
- Quality class 1: 500 mating cycles (gold plated)
- Other quality classes on request
- Assembled at shell available on request
- Selective gold plated contacts available on request (soldering tin plated)

### PRODUCT DRAWING

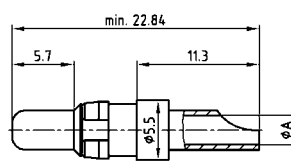
Socket contact



Installation dimension

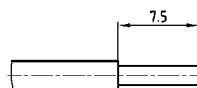


Plug contact

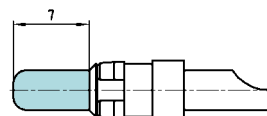


AWG	Current rating	ØA <sup>+0.15</sup>
16-20	10 A	1.80
12-14	20 A	2.70
10-12	30 A	3.50
8-10	40 A	4.80

Wire stripping



Premating contact



### ORDER DATA

SOCKET CONTACT					
Contact type	AWG	Ampere	Quality class	Termination*	Part Number
Socket	16...20	10 A	1	41	132 C 10019 X
Socket	16...20	10 A	3	61	132 A 10019 X
Socket	12...14	20 A	1	42	132 C 10029 X
Socket	12...14	20 A	3	62	132 A 10029 X
Socket	10...12	30 A	1	43	132 C 10039 X
Socket	10...12	30 A	3	63	132 A 10039 X
Socket	8...10	40 A	1	44	132 C 10049 X
Socket	8...10	40 A	3	64	132 A 10049 X

PLUG CONTACT					
Contact type	AWG	Ampere	Quality class	Termination*	Part Number
Plug	16...20	10 A	1	41	131 C 10019 X
Plug	16...20	10 A	3	61	131 A 10019 X
Plug	12...14	20 A	1	42	131 C 10029 X
Plug	12...14	20 A	3	62	131 A 10029 X
Plug	10...12	30 A	1	43	131 C 10039 X
Plug	10...12	30 A	3	63	131 A 10039 X
Plug	8...10	40 A	1	44	131 C 10049 X
Plug	8...10	40 A	3	64	131 A 10049 X

PREMATING CONTACT				
Contact type	AWG	Ampere	Quality class	Part Number
Plug pre-mating	16...20	10 A	1	131 C 10119 X
Plug pre-mating	12...14	20 A	1	131 C 10129 X
Plug pre-mating	10...12	30 A	1	131 C 10139 X
Plug pre-mating	8...10	40 A	1	131 C 10149 X

\*Code use with part number creator

# COMBINATION D-SUB CONTACTS

High power contacts – Screw termination – Straight – For wire size AWG 14



RoHS compliant – CSA listed, File No.: LR 115000-1 – UL listed, File No.: E 228329

## DESCRIPTION

- Precision machined contacts for wire size AWG 14, max. 20 A
- Quality class 3: 50 mating cycles (gold plated)
- Quality class 1: 500 mating cycles (gold plated)
- Other quality classes on request
- For field attachable applications

## PRODUCT DRAWING

Socket contact



Installation dimension

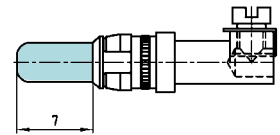


Plug contact



AWG	Current rating	ØA <sup>+0.15</sup>
16-20	10 A	1.80
12-14	20 A	2.70
10-12	30 A	3.50
8-10	40 A	4.80

Premating contact



## ORDER DATA

SOCKET CONTACT				
Contact type	AWG	Ampere	Quality class	Part Number
Socket	14	20 A	1	132 C 36009 X
Socket	14	20 A	3	132 A 36009 X

PLUG CONTACT				
Contact type	AWG	Ampere	Quality class	Part Number
Plug	14	20 A	1	131 C 36009 X
Plug	14	20 A	3	131 A 36009 X
Plug premating	14	20 A	1	131 C 36109 X

# COMBINATION D-SUB CONTACTS

## High power contacts – Crimp – Straight



RoHS compliant – CSA listed, File No.: LR 115000-1-UL listed, File No.: E 228329

### DESCRIPTION

- Precision machined contacts
- Quality class 3: 50 mating cycles (gold plated)
- Quality class 1: 500 mating cycles (gold plated)
- Other quality classes on request
- Tools: Section 14

### PRODUCT DRAWING

Socket contact



Installation dimension



Plug contact

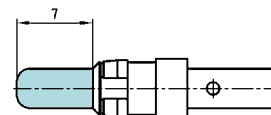


AWG	Current rating	ØA+0.15
16-20	10 A	1.70
12-14	20 A	2.60
10-12	30 A	3.70
8-10	40 A	4.60

Wire stripping



Premating contact



### ORDER DATA

SOCKET CONTACT				
Contact type	AWG	Ampere	Quality class	Part Number
Socket	16...20	10 A	1	132 C 11019 X
Socket	16...20	10 A	3	132 A 11019 X
Socket	12...14	20 A	1	132 C 11029 X
Socket	12...14	20 A	3	132 A 11029 X
Socket	10...12	30 A	1	132 C 11039 X
Socket	10...12	30 A	3	132 A 11039 X
Socket	8...10	40 A	1	132 C 11049 X
Socket	8...10	40 A	3	132 A 11049 X

PLUG CONTACT				
Contact type	AWG	Ampere	Quality class	Part Number
Plug	16...20	10 A	1	131 C 11019 X
Plug	16...20	10 A	3	131 A 11019 X
Plug	12...14	20 A	1	131 C 11029 X
Plug	12...14	20 A	3	131 A 11029 X
Plug	10...12	30 A	1	131 C 11039 X
Plug	10...12	30 A	3	131 A 11039 X
Plug	8...10	40 A	1	131 C 11049 X
Plug	8...10	40 A	3	131 A 11049 X

PREMATING CONTACT				
Contact type	AWG	Ampere	Quality class	Part Number
Plug pre-mating	16...20	10 A	1	131 C 11119 X
Plug pre-mating	12...14	20 A	1	131 C 11129 X
Plug pre-mating	10...12	30 A	1	131 C 11139 X
Plug pre-mating	8...10	40 A	1	131 C 11149 X

# COMBINATION D-SUB CONTACTS

High power contacts – Solder cup or crimp – angled



RoHS compliant – CSA listed, File No.: LR 115000-1 – UL listed, File No.: E 228329

## DESCRIPTION

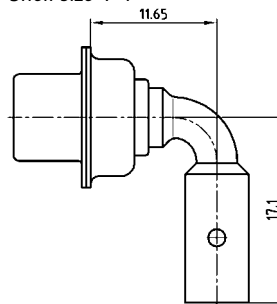
- Precision machined contacts
- Quality class 3: 50 mating cycles (gold plated)
- Quality class 1: 500 mating cycles (gold plated)
- Other quality classes on request

## PRODUCT DRAWING

Socket contact



Installation dimension  
Shell size 1-4



Plug contact

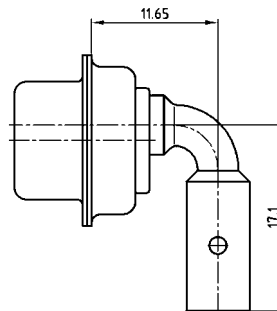


Wire stripping

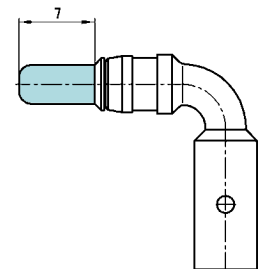


AWG	Current rating	Ø A +0.15	Crimp Plier Part.no. 360X12269X
16-20	10 A	1.70	1.40/1.25
12-14	20 A	2.60	1.85/1.65
10-12	30 A	3.70	2.30/2.05
8-10	40 A	4.60	2.30/2.05

Installation dimension  
Shell size 5



Premating contact



## ORDER DATA

SOCKET CONTACT				
Contact type	AWG	Ampere	Quality class	Part Number
Socket	16...20	10 A	1	132 C 16019 X
Socket	16...20	10 A	3	132 A 16019 X
Socket	12...14	20 A	1	132 C 16029 X
Socket	12...14	20 A	3	132 A 16029 X
Socket	10...12	30 A	1	132 C 16039 X
Socket	10...12	30 A	3	132 A 16039 X
Socket	8...10	40 A	1	132 C 16049 X
Socket	8...10	40 A	3	132 A 16049 X

PLUG CONTACT				
Contact type	AWG	Ampere	Quality class	Part Number
Plug	16...20	10 A	1	131 C 16019 X
Plug	16...20	10 A	3	131 A 16019 X
Plug	12...14	20 A	1	131 C 16029 X
Plug	12...14	20 A	3	131 A 16029 X
Plug	10...12	30 A	1	131 C 16039 X
Plug	10...12	30 A	3	131 A 16039 X
Plug	8...10	40 A	1	131 C 16049 X
Plug	8...10	40 A	3	131 A 16049 X

PREMATING CONTACT				
Contact type	AWG	Ampere	Quality class	Part Number
Plug premating	16...20	10 A	1	131 C 16119 X
Plug premating	12...14	20 A	1	131 C 16129 X
Plug premating	10...12	30 A	1	131 C 16139 X
Plug premating	8...10	40 A	1	131 C 16149 X

# COMBINATION D-SUB CONTACTS

High power contacts – Solder pin – angled



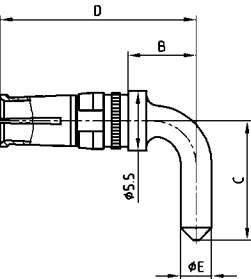
RoHS compliant – CSA listed, File No.: LR 115000-1-UL listed, File No.: E 228329

**DESCRIPTION**

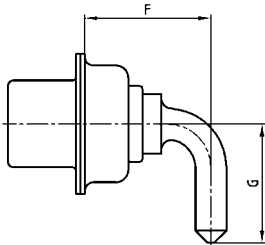
- Precision machined contacts
- Quality class 3: 50 mating cycles (gold plated)
- Quality class 1: 500 mating cycles (gold plated)
- Other quality classes on request

**PRODUCT DRAWING**

Socket contact



Installation dimension  
Shell size 1-4

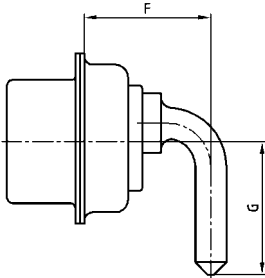


Plug contact

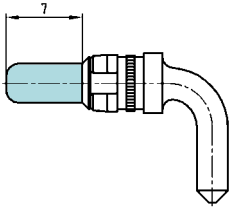


Shell size	Current rating	Termination	A	B	C	D	ØE	F	G
1-4	15 A	55/59	14.54	3.00	10.50	14.68	1.90	8.35	10.50
1-4	20 A	56/73	17.84	6.30	11.00	17.98	2.85	11.65	11.00
1-4	30 A	57/74	26.54	15.00	9.50	26.68	3.20	20.35	9.50
1-4	40 A	58/75	17.84	6.30	11.00	17.98	3.75	11.65	11.00
5	20 A	66/81	20.39	8.85	14.00	20.53	2.85	14.20	12.58
5	30 A	67/82	20.39	8.85	14.00	20.53	3.20	14.20	12.58
5	30 A	65/85	20.39	8.85	14.00	20.53	3.75	14.20	12.58
5	40 A	60/77	26.54	15.00	13.50	26.68	3.20	20.35	12.08

Installation dimension  
Shell size 5



Premating contact



**ORDER DATA**

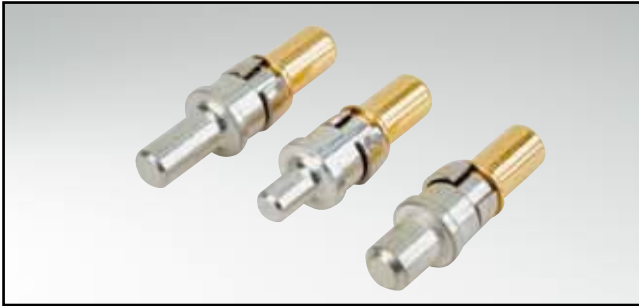
SOCKET CONTACT				
Contact type	Shell size	Quality class	Termination*	Part Number
Socket	1-4	1	55	132 C 13009 X
Socket	1-4	3	59	132 A 13009 X
Socket	1-4	1	56	132 C 13019 X
Socket	1-4	3	73	132 A 13019 X
Socket	1-4	1	57	132 C 13029 X
Socket	1-4	3	74	132 A 13029 X
Socket	1-4	1	58	132 C 13039 X
Socket	1-4	3	75	132 A 13039 X
Socket	5	1	66	132 C 13060 X
Socket	5	3	81	132 A 13060 X
Socket	5	1	67	132 C 13070 X
Socket	5	3	82	132 A 13070 X
Socket	5	1	65	132 C 13059 X
Socket	5	3	85	132 A 13059 X
Socket	5	1	60	132 C 13049 X
Socket	5	3	77	132 A 13049 X

PLUG CONTACT				
Contact type	Shell size	Quality class	Termination*	Part Number
Plug	1-4	1	55	131 C 13009 X
Plug	1-4	3	59	131 A 13009 X
Plug	1-4	1	56	131 C 13019 X
Plug	1-4	3	73	131 A 13019 X
Plug	1-4	1	57	131 C 13029 X
Plug	1-4	3	74	131 A 13029 X
Plug	1-4	1	58	131 C 13039 X
Plug	1-4	3	75	131 A 13039 X
Plug	5	1	66	131 C 13060 X
Plug	5	3	81	131 A 13060 X
Plug	5	1	67	131 C 13070 X
Plug	5	3	82	131 A 13070 X
Plug	5	1	65	131 C 13059 X
Plug	5	3	85	131 A 13059 X
Plug	5	1	60	131 C 13049 X
Plug	5	3	77	131 A 13049 X
Plug premating	1-4	1		131 C 13109 X
Plug premating	1-4	1		131 C 13119 X
Plug premating	1-4	1		131 C 13129 X
Plug premating	1-4	1		131 C 13139 X
Plug premating	5	1		131 C 13160 X
Plug premating	5	1		131 C 13170 X
Plug premating	5	1		131 C 13159 X
Plug premating	5	1		131 C 13149 X

\*Code use with part number creator

# COMBINATION D-SUB CONTACTS

## High power contacts – Solder pin – Straight



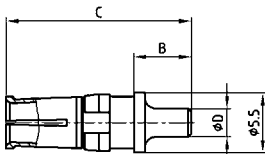
RoHS compliant – CSA listed, File No.: LR 115000-1 – UL listed, File No.: E 228329

### DESCRIPTION

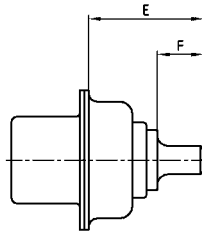
- Precision machined contacts
- Quality class 3: 50 mating cycles (gold plated)
- Quality class 1: 500 mating cycles (gold plated)
- Other quality classes on request
- Assembled at shell available on request

### PRODUCT DRAWING

Socket contact



Installation dimension

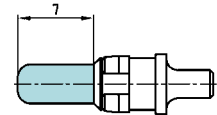


Plug contact



Current rating	Termination	A	B	C	Ø D	E	F
20 A	48/68	15.84	4.60	15.98	1.95	9.65	3.80
20 A	49/69	16.84	5.30	16.98	2.60	10.65	4.30
20 A	50/70	16.24	4.70	16.38	2.85	10.05	3.70
30 A	51/71	19.04	7.50	19.18	3.18	12.85	6.70
40 A	52/72	17.29	5.75	17.43	3.75	11.10	4.75

Premating contact



### ORDER DATA

SOCKET CONTACT				
Contact type	Ampere	Quality class	Termination*	Part Number
Socket	20 A	1	48	132 C 12019 X
Socket	20 A	3	68	132 A 12019 X
Socket	20 A	1	49	132 C 12029 X
Socket	20 A	3	69	132 A 12029 X
Socket	20 A	1	50	132 C 12039 X
Socket	20 A	3	70	132 A 12039 X
Socket	30 A	1	51	132 C 12049 X
Socket	30 A	3	71	132 A 12049 X
Socket	40 A	1	52	132 C 12059 X
Socket	40 A	3	72	132 A 12059 X

PLUG CONTACT				
Contact type	Ampere	Quality class	Termination*	Part Number
Plug	20 A	1	48	131 C 12019 X
Plug	20 A	3	68	131 A 12019 X
Plug	20 A	1	49	131 C 12029 X
Plug	20 A	3	69	131 A 12029 X
Plug	20 A	1	50	131 C 12039 X
Plug	20 A	3	70	131 A 12039 X
Plug	30 A	1	51	131 C 12049 X
Plug	30 A	3	71	131 A 12049 X
Plug	40 A	1	52	131 C 12059 X
Plug	40 A	3	72	131 A 12059 X

PREMATING CONTACT			
Contact type	Ampere	Quality class	Part Number
Plug premating	20 A / Ø .077"/1.95	1	131 C 12119 X
Plug premating	20 A / Ø .102"/2.60	1	131 C 12129 X
Plug premating	20 A / Ø .112"/2.85	1	131 C 12139 X
Plug premating	30 A / Ø .125"/3.18	1	131 C 12149 X
Plug premating	40 A / Ø .148"/3.75	1	131 C 12159 X

\*Code use with part number creator

# COMBINATION D-SUB CONTACTS

High voltage contacts – Solder termination – Straight and angled – For wire size AWG 20



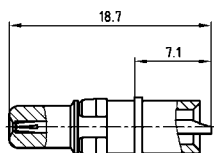
RoHS compliant – CSA listed, File No.: LR 115000-1 – UL listed, File No.: E 228329

## DESCRIPTION

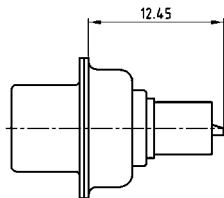
- Precision machined contacts for wire size **AWG 20**, max. 2,8 kV
- Quality class 1: 500 mating cycles (gold plated)
- Other quality classes on request

## PRODUCT DRAWING

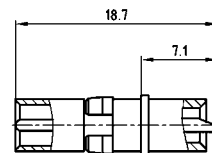
Socket contact straight



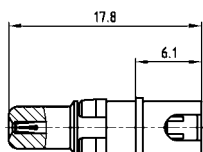
Installation dimension straight



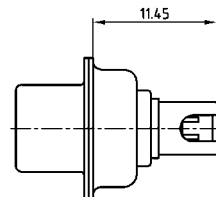
Plug contact straight



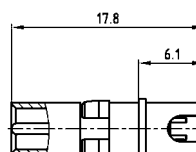
Socket contact angled



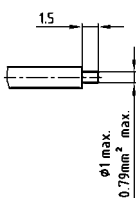
Installation dimension angled



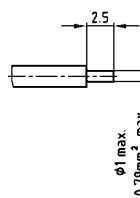
Plug contact angled



Wire stripping



Wire stripping



## ORDER DATA

SOCKET CONTACT		
Contact type	AWG	Part Number
Socket/Straight	20	132 J 14019 X
Socket/Angled	20	132 J 14519 X

PLUG CONTACT		
Contact type	AWG	Part Number
Plug/Straight	20	131 J 14019 X
Plug/Angled	20	131 J 14519 X



# COMBINATION D-SUB CONTACTS

Coaxial contacts – Straight – Inner conductor solder-, outer conductor crimp- / solder termination



RoHS compliant – CSA listed, File No.: LR 115000-1-UL listed, File No.: E 228329

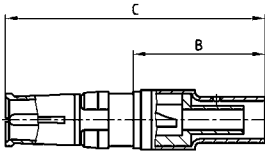
## DESCRIPTION

- 50 and 75 Ω-design
- Contact platings:
  - .051 μ" / 1.3 μm Au mating side inner conductor /
  - .032 μ" / 0.8 μm Au outer conductor
  - .008 μ" / 0.2 μm Au mating side inner- and outer conductor
- Other platings are available
- Delivery includes: contacts and sleeve supplied loose

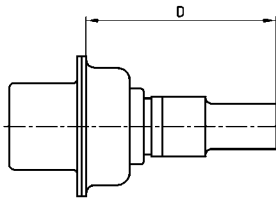
## PRODUCT DRAWING

### 50 Ω version

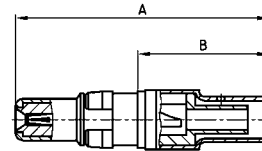
Socket contact



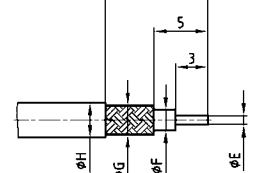
Installation dimension



Plug contact



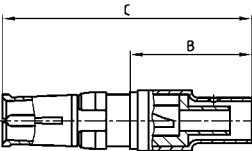
Wire stripping



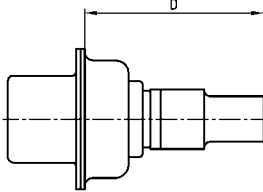
Usable cables RG	A	B	C	D max.	Ø E max.	Ø F max.	Ø G max.	Ø H max.
178BU, 196AU, 404 U	22.50	11.20	23.00	17.55	0.85	1.20	1.40	2.30
174U, 188AU, 316U	22.50	11.20	23.00	17.55	0.85	1.90	2.30	3.20
180BU	22.50	11.20	23.00	17.55	0.85	2.80	3.10	4.50
58CU, 141AU	26.30	14.80	26.80	20.15	1.00	3.00	3.60	5.20
316U double braided	23.50	12.20	24.00	17.55	0.85	1.90	2.70	3.20

### 75 Ω version

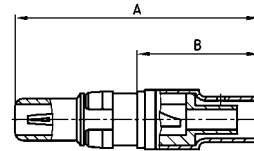
Socket contact



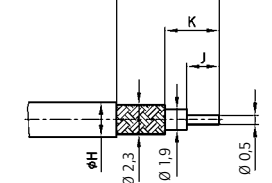
Installation dimension



Plug contact



Wire stripping



Usable cables RG	A	B	C	D max.	Ø H max.	J	K	L
178BU, 187AU	18.55	7.30	19.05	12.80	2.30	2.00	3.10	6.00
178BU, 187AU	22.50	11.20	23.00	16.70	3.20	3.20	5.00	9.50

## ORDER DATA

### SOCKET CONTACT .051 μ" / 1.3 μm Au INNER / .032 μ" / 0.8 μm Au OUTER CONDUCTOR

Contact type	Usable cables RG	Part Number
Socket 50 Ω	178BU, 196AU, 404U	132 J 20019 X
Socket 50 Ω	174U, 188AU, 316U	132 J 20029 X
Socket 50 Ω	180BU	132 J 20039 X
Socket 50 Ω	58CU, 141AU	132 J 20049 X
Socket 50 Ω	316U double braided	132 J 20059 X
Socket 75 Ω	179BU, 187AU (B=.287" / 7.3 mm)	132 J 30019 X
Socket 75 Ω	179BU, 187 AU (B=.441" / 11.2 mm)	132 J 30029 X

### PLUG CONTACT .051 μ" / 1.3 μm Au INNER / .032 μ" / 0.8 μm Au OUTER CONDUCTOR

Contact type	Usable cables RG	Part Number
Plug 50 Ω	178BU, 196AU, 404U	131 J 20019 X
Plug 50 Ω	174U, 188AU, 316U	131 J 20029 X
Plug 50 Ω	180BU	131 J 20039 X
Plug 50 Ω	58CU, 141AU	131 J 20049 X
Plug 50 Ω	316U double braided	131 J 20059 X
Plug 75 Ω	179BU, 187AU (B=.287" / 7.3 mm)	131 J 30019 X
Plug 75 Ω	179BU, 187 AU (B=.441" / 11.2 mm)	131 J 30029 X

### SOCKET CONTACT .008 μ" / 0.2 μm Au INNER- AND OUTER CONDUCTOR

Contact type	Usable cables RG	Part Number
Socket 50 Ω	178BU, 196AU, 404U	132 A 20019 X
Socket 50 Ω	174U, 188AU, 316U	132 A 20029 X
Socket 50 Ω	180BU	132 A 20039 X
Socket 50 Ω	58CU, 141AU	132 A 20049 X
Socket 50 Ω	316U double braided	132 A 20059 X
Socket 75 Ω	179BU, 187AU (B=.287" / 7.3 mm)	132 A 30019 X
Socket 75 Ω	179BU, 187 AU (B=.441" / 11.2 mm)	132 A 30029 X

### PLUG CONTACT .008 μ" / 0.2 μm Au INNER- AND OUTER CONDUCTOR

Contact type	Usable cables RG	Part Number
Plug 50 Ω	178BU, 196AU, 404U	131 A 20019 X
Plug 50 Ω	174U, 188AU, 316U	131 A 20029 X
Plug 50 Ω	180BU	131 A 20039 X
Plug 50 Ω	58CU, 141AU	131 A 20049 X
Plug 50 Ω	316U double braided	131 A 20059 X
Plug 75 Ω	179BU, 187AU (B=.287" / 7.3 mm)	131 A 30019 X
Plug 75 Ω	179BU, 187 AU (B=.441" / 11.2 mm)	131 A 30029 X

# COMBINATION D-SUB CONTACTS

Coaxial contacts – Straight – Inner and outer conductor crimp termination



RoHS compliant – CSA listed, File No.: LR 115000-1-UL listed, File No.: E 228329

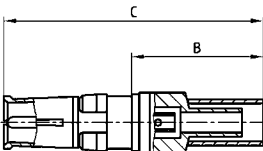
## DESCRIPTION

- 50 and 75 Ω design
- Contact platings:
  - .051 μ"/1.3 μm Au mating side inner conductor / .032 μ"/0.8 μm Au outer conductor
  - .008 μ"/0.2 μm Au mating side inner- and outer conductor
- Quality class 1: 500 mating cycles (gold plated)
- Delivery includes: contacts and sleeve supplied loose

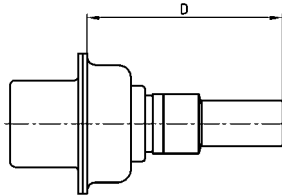
## PRODUCT DRAWING

### 50 Ω version

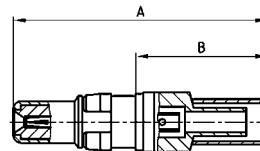
Socket contact



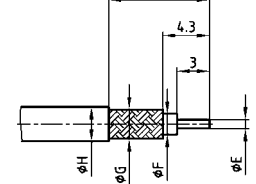
Installation dimension



Plug contact



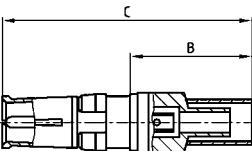
Wire stripping



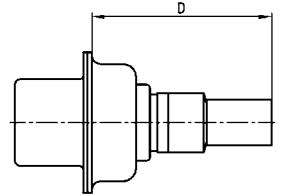
Usable cables RG	A	B	C	D max.	Ø E max.	Ø F max.	Ø G max.	Ø H max.
174Bu, 188AU, 316U	22.50	11.20	23.00	16.60	0.60	1.90	2.30	3.20
316U double braided	22.50	11.20	23.00	16.60	0.60	1.90	3.00	3.80
58CU, 141AU	22.20	10.90	22.70	16.30	1.30	3.70	4.30	5.20

### 75 Ω version

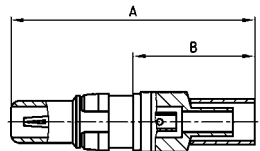
Socket contact



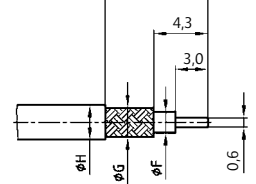
Installation dimension



Plug contact



Wire stripping



Usable cables RG	A	B	C	D	Ø F max.	Ø G max.	Ø H max.	L
179BU, 187AU	22.45	11.20	22.95	16.70	1.90	2.30	3.20	9.30
180BU	21.65	10.40	22.15	15.90	2.80	3.20	4.50	8.80

## ORDER DATA

### SOCKET CONTACT .051 μ"/1.3 μm Au INNER / .032 μ"/0.8 μm Au OUTER CONDUCTOR

Contact type	Usable cables RG	Part Number
Socket 50 Ω	174U, 188AU, 316U	132 J 21019 X
Socket 50 Ω	58CU, 141AU	132 J 21039 X
Socket 50 Ω	316U double braided	132 J 21029 X
Socket 75 Ω	179BU, 187AU	132 J 31019 X
Socket 75 Ω	180BU	132 J 31029 X

### PLUG CONTACT .051 μ"/1.3 μm Au INNER / .032 μ"/0.8 μm Au OUTER CONDUCTOR

Contact type	Usable cables RG	Part Number
Plug 50 Ω	174U, 188AU, 316U	131 J 21019 X
Plug 50 Ω	58CU, 141AU	131 J 21039 X
Plug 50 Ω	316U double braided	131 J 21029 X
Plug 75 Ω	179BU, 187AU	131 J 31019 X
Plug 75 Ω	180BU	131 J 31029 X

### SOCKET CONTACT .008 μ"/0.2 μm Au INNER- AND OUTER CONDUCTOR

Contact type	Usable cables RG	Part Number
Socket 50 Ω	174U, 188AU, 316U	132 A 21019 X
Socket 50 Ω	58CU, 141AU	132 A 21039 X
Socket 50 Ω	316U double braided	132 A 21029 X
Socket 75 Ω	179BU, 187AU	132 A 31019 X
Socket 75 Ω	180BU	132 A 31029 X

### PLUG CONTACT .008 μ"/0.2 μm Au INNER- AND OUTER CONDUCTOR

Contact type	Usable cables RG	Part Number
Plug 50 Ω	174U, 188AU, 316U	131 A 21019 X
Plug 50 Ω	58CU, 141AU	131 A 21039 X
Plug 50 Ω	316U double braided	131 A 21029 X
Plug 75 Ω	179BU, 187AU	131 A 31019 X
Plug 75 Ω	180BU	131 A 31029 X

# COMBINATION D-SUB CONTACTS

Coaxial contacts – Angled – Inner conductor solder-, outer conductor crimp- / Solder termination



RoHS compliant – CSA listed, File No.: LR 115000-1 –UL listed, File No.: E 228329

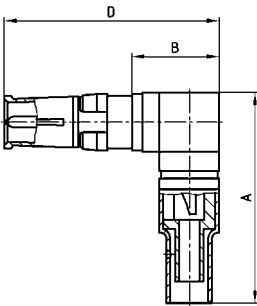
## DESCRIPTION

- 50 Ω design
- Contact platings:
  - .051 μ" / 1.3 μm Au mating side inner conductor /
  - .032 μ" / 0.8 μm Au outer conductor
  - .008 μ" / 0.2 μm Au mating side inner- and outer conductor
- Quality class 1: 500 mating cycles (gold plated)
- Delivery includes: contacts and sleeve supplied loose

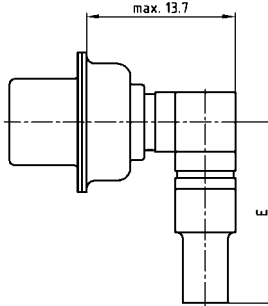
## PRODUCT DRAWING

### 50 Ω version

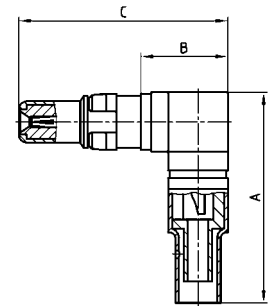
Socket contact



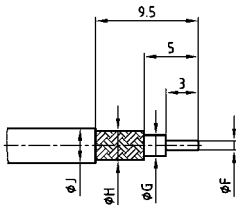
Installation dimension



Plug contact



Wire stripping



Usable cables RG	A	B	C	D	E	Ø F max.	Ø G max.	Ø H max.	Ø J max.
174U, 188AU, 316U	18.50	8.20	19.30	19.80	15.70	0.85	1.90	2.30	3.20
178BU, 196AU, 404U	18.50	8.20	19.30	19.80	15.70	0.85	1.20	1.40	2.30
316U double braided	19.50	8.20	19.30	19.80	16.70	0.85	1.90	2.70	3.50

## ORDER DATA

SOCKET CONTACT .051 μ" / 1.3 μm Au INNER / .032 μ" / 0.8 μm Au OUTER CONDUCTOR		
Contact type	Usable cables RG	Part Number
Socket 50 Ω	178BU, 196AU, 404U	132 J 22029 X
Socket 50 Ω	174U, 188AU, 316U	132 A 22019 X
Socket 50 Ω	316U double braided	132 J 22039 X

PLUG CONTACT .051 μ" / 1.3 μm Au INNER / .032 μ" / 0.8 μm Au OUTER CONDUCTOR		
Contact type	Usable cables RG	Part Number
Plug 50 Ω	178BU, 196AU, 404U	131 J 22029 X
Plug 50 Ω	174U, 188AU, 316U	131 A 22019 X
Plug 50 Ω	316U double braided	131 J 22039 X

SOCKET CONTACT .008 μ" / 0.2 μm Au INNER- AND OUTER CONDUCTOR		
Contact type	Usable cables RG	Part Number
Socket 50 Ω	178BU, 196AU, 404U	132 A 22029 X
Socket 50 Ω	174U, 188AU, 316U	132 A 22019 X
Socket 50 Ω	316U double braided	132 A 22039 X

PLUG CONTACT .008 μ" / 0.2 μm Au INNER- AND OUTER CONDUCTOR		
Contact type	Usable cables RG	Part Number
Plug 50 Ω	178BU, 196AU, 404U	131 A 22029 X
Plug 50 Ω	174U, 188AU, 316U	131 A 22019 X
Plug 50 Ω	316U double braided	131 A 22039 X

# COMBINATION D-SUB CONTACTS

Coaxial contacts – Angled – Inner- and outer conductor crimp termination



RoHS compliant – CSA listed, File No.: LR 115000-1-UL listed, File No.: E 228329

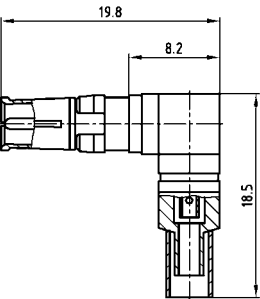
**DESCRIPTION**

- 50 and 75 Ω design
- Contact platings:
  - .051 μ" / 1.3 μm Au mating side inner conductor / .032 μ" / 0.8 μm Au outer conductor
  - .008 μ" / 0.2 μm Au mating side inner- and outer conductor
- Quality class 1: 500 mating cycles (gold plated)
- Delivery includes: contacts and sleeve supplied loose

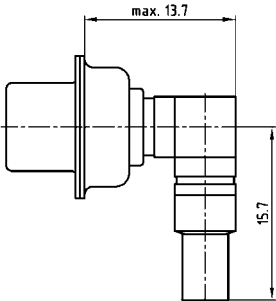
**PRODUCT DRAWING**

**50 Ω version**

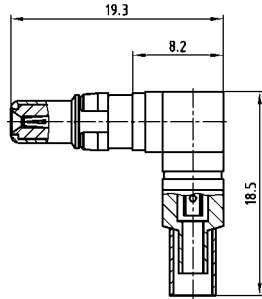
Socket contact



Installation dimension

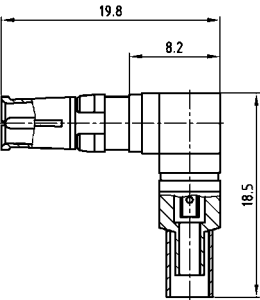


Plug contact

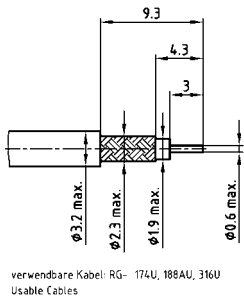


**75 Ω version**

Socket contact

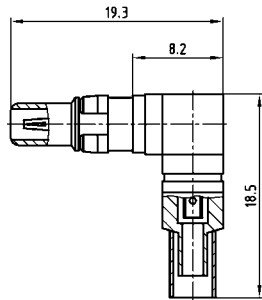


Wire stripping



verwendbare Kabel: RG- 174U, 188AU, 316U  
Usable Cables

Plug contact



**ORDER DATA**

SOCKET CONTACT .051 μ" / 1.3 μm Au INNER / .032 μ" / 0.8 μm Au OUTER CONDUCTOR		
Contact type	Usable cables RG	Part Number
Socket 50 Ω	174U, 188AU, 316U	132 J 23019 X
Socket 75 Ω	179BU, 187AU	132 J 33019 X

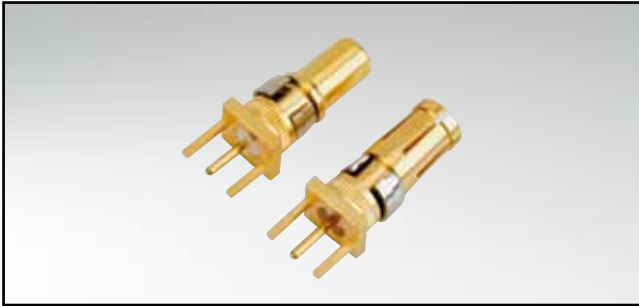
PLUG CONTACT .051 μ" / 1.3 μm Au INNER / .032 μ" / 0.8 μm Au OUTER CONDUCTOR		
Contact type	Usable cables RG	Part Number
Plug 50 Ω	174U, 188AU, 316U	131 J 23019 X
Plug 75 Ω	179BU, 187AU	131 J 33019 X

SOCKET CONTACT .008 μ" / 0.2 μm Au INNER- AND OUTER CONDUCTOR		
Contact type	Usable cables RG	Part Number
Socket 50 Ω	174U, 188AU, 316U	132 A 23019 X
Socket 75 Ω	179BU, 187AU	132 A 33019 X

PLUG CONTACT .008 μ" / 0.2 μm Au INNER- AND OUTER CONDUCTOR		
Contact type	Usable cables RG	Part Number
Plug 50 Ω	174U, 188AU, 316U	131 A 23019 X
Plug 75 Ω	179BU, 187AU	131 A 33019 X

# COMBINATION D-SUB CONTACTS

Coaxial contacts – Straight – PCB termination – 3 solder pins



RoHS compliant – CSA listed, File No.: LR 115000-1 – UL listed, File No.: E 228329

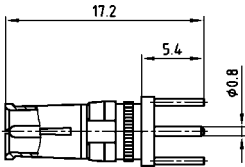
## DESCRIPTION

- 50 and 75 Ω design
- Contact finishings:
  - .051 μ" / 1.3 μm Au mating side inner conductor / .032 μ" / 0.8 μm Au outer conductor
  - .008 μ" / 0.2 μm Au mating side inner- and outer conductor
- Quality class 1: 500 mating cycles (gold plated)

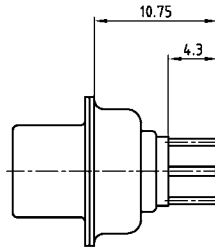
## PRODUCT DRAWING

### 50 Ω version

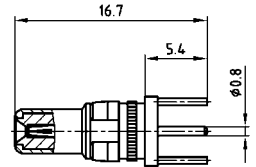
Socket contact



Installation dimension

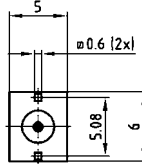
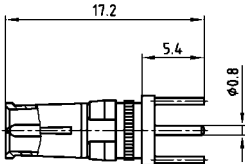


Plug contact

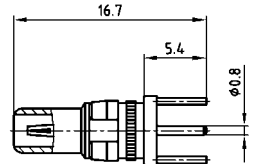


### 75 Ω version

Socket contact



Plug contact



## ORDER DATA

SOCKET CONTACT .051 μ" / 1.3 μm Au INNER / .032 μ" / 0.8 μm Au OUTER CONDUCTOR		
Contact type	Termination*	Part Number
Socket 50 Ω	76	132 J 24019 X
Socket 75 Ω	86	132 J 34019 X

PLUG CONTACT .051 μ" / 1.3 μm Au INNER / .032 μ" / 0.8 μm Au OUTER CONDUCTOR		
Contact type	Termination*	Part Number
Plug 50 Ω	76	131 J 24019 X
Plug 75 Ω	86	131 J 34019 X

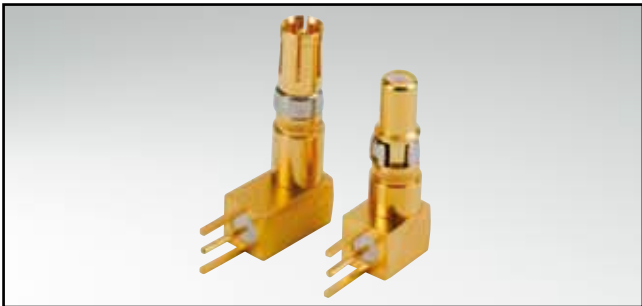
SOCKET CONTACT .008 μ" / 0.2 μm Au INNER- AND OUTER CONDUCTOR		
Contact type	Termination*	Part Number
Socket 50 Ω	G7	132 A 24019 X
Socket 75 Ω	G8	132 A 34019 X

PLUG CONTACT .008 μ" / 0.2 μm Au INNER- AND OUTER CONDUCTOR		
Contact type	Termination*	Part Number
Plug 50 Ω	G7	131 A 24019 X
Plug 75 Ω	G8	131 A 34019 X

\*Code use with part number creator

# COMBINATION D-SUB CONTACTS

Coaxial contacts – Angled – PCB termination – 3 solder pins



RoHS compliant – CSA listed, File No.: LR 115000-1-UL listed, File No.: E 228329

**DESCRIPTION**

- 50 and 75 Ω design
- Contact platings:
  - .051 μ" / 1.3 μm Au mating side inner conductor / .032 μ" / 0.8 μm Au outer conductor
  - .008 μ" / 0.2 μm Au mating side inner- and outer conductor
- Quality class 1: 500 mating cycles (gold plated)

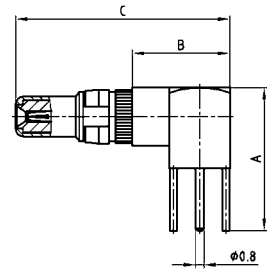
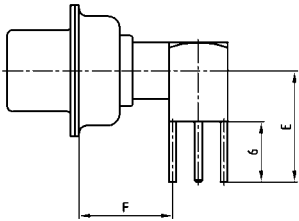
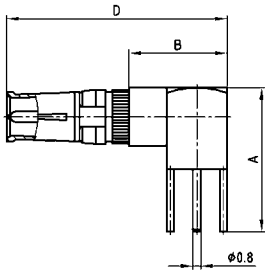
**PRODUCT DRAWING**

**50 Ω version**

Socket contact

Installation dimension

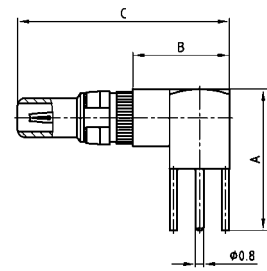
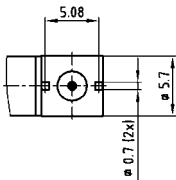
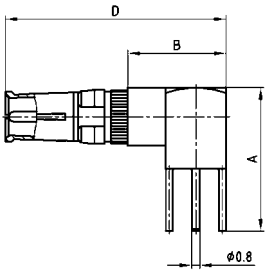
Plug contact



**75 Ω version**

Socket contact

Plug contact



Shell size	A	B	C	D	E	F
1-4	13.80	9.30	20.70	21.20	11.00	9.30
5	16.80	11.80	23.20	23.70	14.00	11.80

**ORDER DATA**

SOCKET CONTACT .051 μ" / 1.3 μm AU INNER / .032 μ" / 0.8 μm AU OUTER CONDUCTOR			
Contact type	Shell size	Termination*	Part Number
Socket 50 Ω	1-4	78	132 J 25019 X
Socket 50 Ω	5	79	132 J 25029 X
Socket 75 Ω	1-4	88	132 J 35019 X
Socket 75 Ω	5	89	132 J 35029 X

PLUG CONTACT .051 μ" / 1.3 μm AU INNER / .032 μ" / 0.8 μm AU OUTER CONDUCTOR			
Contact type	Shell size	Termination*	Part Number
Plug 50 Ω	1-4	78	131 J 25019 X
Plug 50 Ω	5	79	131 J 25029 X
Plug 75 Ω	1-4	88	131 J 35019 X
Plug 75 Ω	5	89	131 J 35029 X

SOCKET CONTACT .008 μ" / 0.2 μm AU INNER- AND OUTER CONDUCTOR			
Contact type	Shell size	Termination*	Part Number
Socket 50 Ω	1-4	G9	132 A 25019 X
Socket 50 Ω	5	H1	132 A 25029 X
Socket 75 Ω	1-4	H2	132 A 35019 X
Socket 75 Ω	5	H3	132 A 35029 X

PLUG CONTACT .008 μ" / 0.2 μm AU INNER- AND OUTER CONDUCTOR			
Contact type	Shell size	Termination*	Part Number
Plug 50 Ω	1-4	G9	131 A 25019 X
Plug 50 Ω	5	H1	131 A 25029 X
Plug 75 Ω	1-4	H2	131 A 35019 X
Plug 75 Ω	5	H3	131 A 35029 X

\*Code use with part number creator

# COMBINATION D-SUB CONTACTS

Coaxial contacts – Angled – PCB termination – 5 solder pins



RoHS compliant – CSA listed, File No.: LR 115000-1 – UL listed, File No.: E 228329

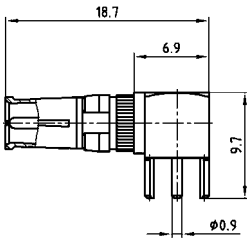
## DESCRIPTION

- 50 and 75 Ω design
- For mounting connector on edge of PCB without metal bracket
- Contact platings:
  - .051 μ" / 1.3 μm Au mating side inner conductor / .032 μ" / 0.8 μm Au outer conductor
  - .008 μ" / 0.2 μm Au mating side inner- and outer conductor
- Quality class 1: 500 mating cycles (gold plated)

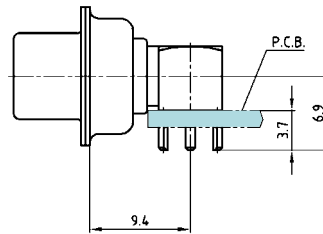
## PRODUCT DRAWING

### 50 Ω version

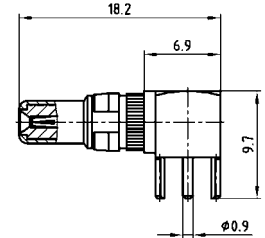
Socket contact



Installation dimension

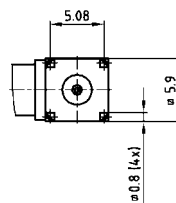
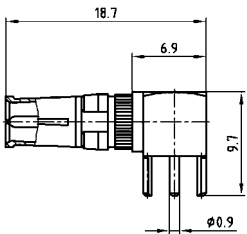


Plug contact

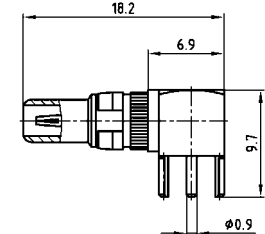


### 75 Ω version

Socket contact



Plug contact



## ORDER DATA

SOCKET CONTACT .051 μ" / 1.3 μm Au INNER / .032 μ" / 0.8 μm Au OUTER CONDUCTOR		
Contact type	Termination*	Part Number
Socket 50 Ω	80	132 J 25519 X
Socket 75 Ω	90	132 J 35519 X

PLUG CONTACT .051 μ" / 1.3 μm Au INNER / .032 μ" / 0.8 μm Au OUTER CONDUCTOR		
Contact type	Termination*	Part Number
Plug 50 Ω	80	131 J 25519 X
Plug 75 Ω	90	131 J 35519 X

SOCKET CONTACT .008 μ" / 0.2 μm Au INNER- AND OUTER CONDUCTOR		
Contact type	Termination*	Part Number
Socket 50 Ω	H4	132 A 25519 X
Socket 75 Ω	H5	132 A 35519 X

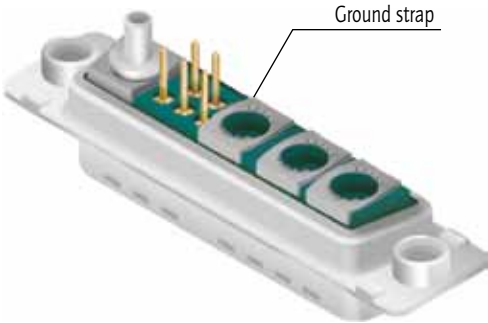
PLUG CONTACT .008 μ" / 0.2 μm Au INNER- AND OUTER CONDUCTOR		
Contact type	Termination*	Part Number
Plug 50 Ω	H4	131 A 25519 X
Plug 75 Ω	H5	131 A 35519 X

\*Code use with part number creator

# COMBINATION D-SUB ACCESSORIES

## Grounding for coaxial contacts

To optimize a perfect ground connection from the coaxial contact (outer conductor) to the metal shell. (Factory installed)..



## Guide post

For safe mating of male and female connectors with contact loss. Guide post can be installed after connector is mounted.



## Part Number

Guide post      160 X 11279 X

## Hole plug

The hole plug can be used for both male and female connector. The assembly is implemented from the mating side. The hole plug is used to plug un wanted holes in the insulator.

Material: Polyester GF UL 94 V-0  
Colour: black



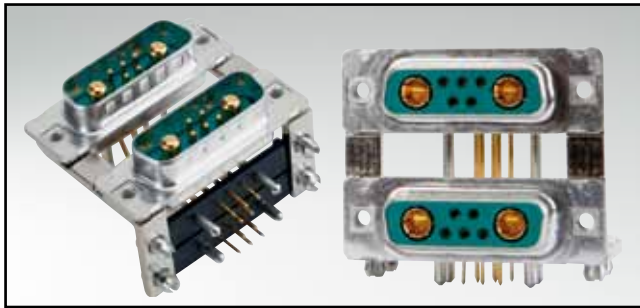
## Part Number

Hole plug      160 X 10939 X



# COMBINATION D-SUB – DUAL PORT WITH CONTACTS LOADED

Solder pin – Angled – Precision machined contacts – Connector spacing .750" / 19,05 mm



RoHS compliant

## DESCRIPTION

- Designs: 5W1/7W2/13W3/17W2/17W5
- Mounting styles:
  - with mounting bracket and 4-40 UNC threaded insert
  - with mounting bracket, PCB clip and 4-40 UNC threaded insert
- Quality class 3 (also available in quality class 1)
- Shell: Steel tin plated (brass tin plated or stainless steel available on request)
- Other variations on request

## PRODUCT DRAWING

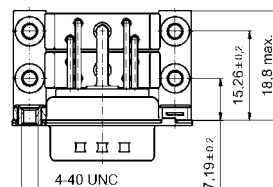
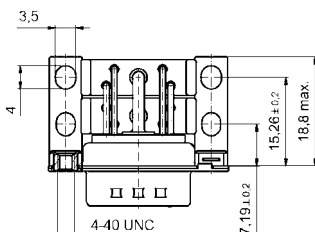
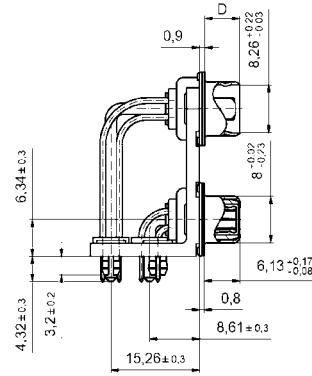
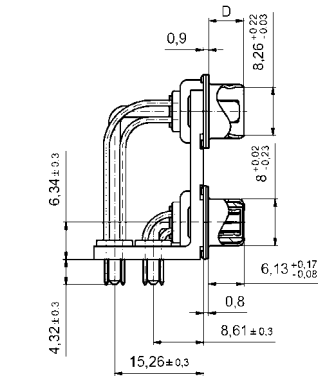
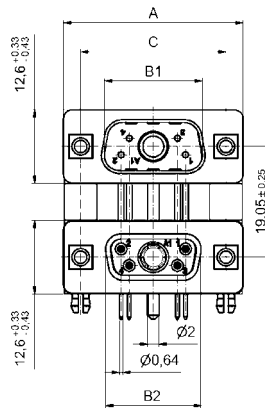
Type	A <sup>+0</sup> / <sub>-0.76</sub>	B1 <sup>+0.25</sup> / <sub>-0</sub>	B2 <sup>+0</sup> / <sub>-0.25</sub>	C	D <sup>+0</sup> / <sub>-0.3</sub>
5W1	31.19	16.79	16.46	25.00 <sup>+0.02</sup> / <sub>-0.02</sub>	6.12
7W2	39.52	25.12	24.79	33.30 <sup>+0.02</sup> / <sub>-0.02</sub>	6.12
13W3	53.42	38.84	38.50	47.04 <sup>+0.02</sup> / <sub>-0.02</sub>	5.99
17W2	53.42	38.84	38.50	47.04 <sup>+0.02</sup> / <sub>-0.02</sub>	5.99
17W5	69.70	55.30	54.96	63.50 <sup>+0.02</sup> / <sub>-0.02</sub>	5.99

Graphically representation of only one variant!

Mounting style: 4-40 UNC threaded insert



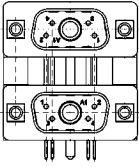
Mounting style: PCB clip and 4-40 UNC threaded insert



# COMBINATION D-SUB – DUAL PORT VARIATIONS

Solder pin – Angled – Precision machined contacts – Connector spacing .750" / 19,05 mm

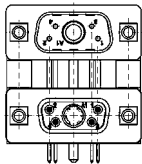
## ORDER DATA



Variation:  
plug upper –  
plug bottom

Type	Mounting style 4-40 UNC	Part Number
2 x 5W1	Threaded insert	13-001013
2 X 7W2	Threaded insert	13-001023
2 X 13W3	Threaded insert	13-001033
2 X 17W2	Threaded insert	13-001043
2 X 17W5	Threaded insert	13-001053

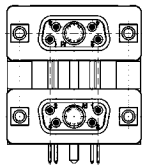
No. of pos.	Mounting style 4-40 UNC	Part Number
2 x 5W1	Threaded insert/PCB clip	13-001213
2 X 7W2	Threaded insert/PCB clip	13-001223
2 X 13W3	Threaded insert/PCB clip	13-001233
2 X 17W2	Threaded insert/PCB clip	13-001243
2 X 17W5	Threaded insert/PCB clip	13-001253



Variation:  
plug upper –  
socket bottom

Type	Mounting style 4-40 UNC	Part Number
2 x 5W1	Threaded insert	13-001063
2 X 7W2	Threaded insert	13-001073
2 X 13W3	Threaded insert	13-001083
2 X 17W2	Threaded insert	13-001093
2 X 17W5	Threaded insert	13-001103

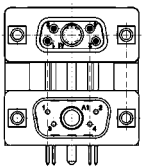
No. of pos.	Mounting style 4-40 UNC	Part Number
2 x 5W1	Threaded insert/PCB clip	13-001263
2 X 7W2	Threaded insert/PCB clip	13-001273
2 X 13W3	Threaded insert/PCB clip	13-001283
2 X 17W2	Threaded insert/PCB clip	13-001293
2 X 17W5	Threaded insert/PCB clip	13-001303



Variation:  
socket upper –  
socket bottom

Type	Mounting style 4-40 UNC	Part Number
2 x 5W1	Threaded insert	13-001113
2 X 7W2	Threaded insert	13-001123
2 X 13W3	Threaded insert	13-001133
2 X 17W2	Threaded insert	13-001143
2 X 17W5	Threaded insert	13-001153

No. of pos.	Mounting style 4-40 UNC	Part Number
2 x 5W1	Threaded insert/PCB clip	13-001313
2 X 7W2	Threaded insert/PCB clip	13-001323
2 X 13W3	Threaded insert/PCB clip	13-001333
2 X 17W2	Threaded insert/PCB clip	13-001343
2 X 17W5	Threaded insert/PCB clip	13-001353



Variation:  
socket upper –  
plug bottom

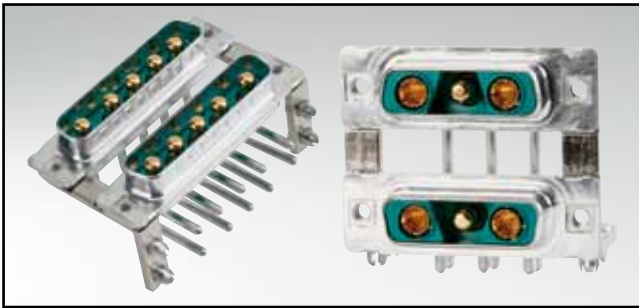
Type	Mounting style 4-40 UNC	Part Number
2 x 5W1	Threaded insert	13-001163
2 X 7W2	Threaded insert	13-001173
2 X 13W3	Threaded insert	13-001183
2 X 17W2	Threaded insert	13-001193
2 X 17W5	Threaded insert	13-001203

No. of pos.	Mounting style 4-40 UNC	Part Number
2 x 5W1	Threaded insert/PCB clip	13-001363
2 X 7W2	Threaded insert/PCB clip	13-001373
2 X 13W3	Threaded insert/PCB clip	13-001383
2 X 17W2	Threaded insert/PCB clip	13-001393
2 X 17W5	Threaded insert/PCB clip	13-001403

PCB clip .122" / 3.1 ± .004" / 0.10 mm hole diameter and .063" / 1.6 mm circuit board thickness

# COMBINATION D-SUB – DUAL PORT WITH LOADED CONTACTS

Solder pin – Angled – Precision machined contacts – Connector spacing .750" / 19,05 mm



RoHS compliant

## DESCRIPTION

- Designs: **2W2C/3W3/3W3C/5W5/8W8**
- Mounting styles:
  - with mounting bracket and 4-40 UNC threaded insert
  - with mounting bracket, PCB clip and 4-40 UNC threaded insert
- Quality class 3 (also available in quality class 1)
- Shell: Steel tin plated (brass tin plated or stainless steel available on request)

## PRODUCT DRAWING

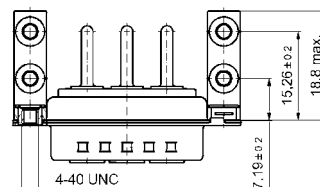
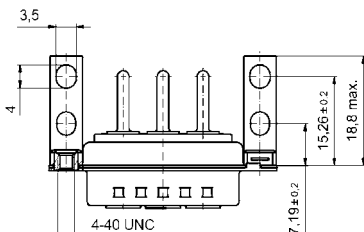
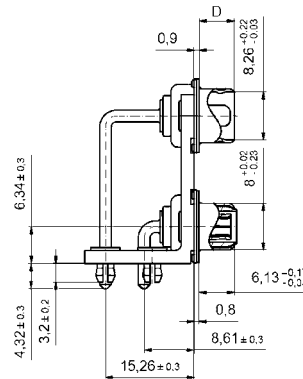
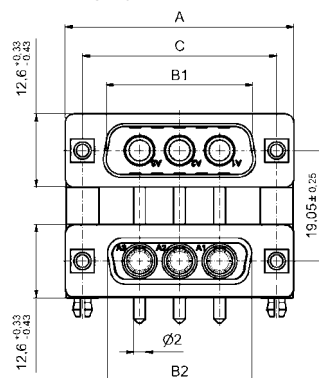
Type	A <sup>+0</sup> / <sub>-0.76</sub>	B1 <sup>+0.25</sup> / <sub>-0</sub>	B2 <sup>+0</sup> / <sub>-0.25</sub>	C	D <sup>+0</sup> / <sub>-0.3</sub>
2W2C	31.19	16.79	16.46	25.00 <sup>+0.12</sup> / <sub>-0.13</sub>	6.12
3W3	39.52	25.12	24.79	33.30 <sup>+0.15</sup> / <sub>-0.10</sub>	6.12
3W3C	39.52	25.12	24.79	33.30 <sup>+0.15</sup> / <sub>-0.10</sub>	6.12
5W5	53.42	38.84	38.50	47.04 <sup>+0.13</sup> / <sub>-0.13</sub>	5.99
8W8	69.70	55.30	54.96	63.50 <sup>+0.13</sup> / <sub>-0.13</sub>	5.99

Graphically representation of only one variant!

Mounting style: 4-40 UNC threaded insert



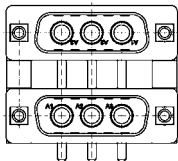
Mounting style: PCB clip and 4-40 UNC threaded insert



# COMBINATION D-SUB – DUAL PORT VARIATIONS

Solder pin – Angled – Precision machined contacts – Connector spacing .750" / 19,05 mm

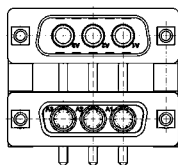
**ORDER DATA**



Type	Mounting style 4-40 UNC	Part Number
2 X 2W2C	Threaded insert	13-001413
2 X 3W3	Threaded insert	13-001423
2 X 3W3C	Threaded insert	13-001433
2 X 5W5	Threaded insert	13-001443
2 X 8W8	Threaded insert	13-001453

No. of pos.	Mounting style 4-40 UNC	Part Number
2 X 2W2C	Threaded insert/PCB clip	13-001613
2 X 3W3	Threaded insert/PCB clip	13-001623
2 X 3W3C	Threaded insert/PCB clip	13-001633
2 X 5W5	Threaded insert/PCB clip	13-001643
2 X 8W8	Threaded insert/PCB clip	13-001653

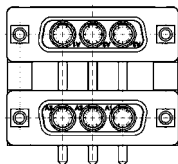
Variation:  
plug upper –  
plug bottom



Type	Mounting style 4-40 UNC	Part Number
2 X 2W2C	Threaded insert	13-001463
2 X 3W3	Threaded insert	13-001473
2 X 3W3C	Threaded insert	13-001483
2 X 5W5	Threaded insert	13-001493
2 X 8W8	Threaded insert	13-001503

No. of pos.	Mounting style 4-40 UNC	Part Number
2 X 2W2C	Threaded insert/PCB clip	13-001663
2 X 3W3	Threaded insert/PCB clip	13-001673
2 X 3W3C	Threaded insert/PCB clip	13-001683
2 X 5W5	Threaded insert/PCB clip	13-001693
2 X 8W8	Threaded insert/PCB clip	13-001703

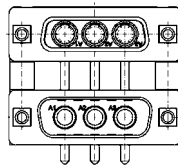
Variation:  
plug upper –  
socket bottom



Type	Mounting style 4-40 UNC	Part Number
2 X 2W2C	Threaded insert	13-001513
2 X 3W3	Threaded insert	13-001523
2 X 3W3C	Threaded insert	13-001533
2 X 5W5	Threaded insert	13-001543
2 X 8W8	Threaded insert	13-001553

No. of pos.	Mounting style 4-40 UNC	Part Number
2 X 2W2C	Threaded insert/PCB clip	13-001713
2 X 3W3	Threaded insert/PCB clip	13-001723
2 X 3W3C	Threaded insert/PCB clip	13-001733
2 X 5W5	Threaded insert/PCB clip	13-001743
2 X 8W8	Threaded insert/PCB clip	13-001753

Variation:  
socket upper –  
socket bottom



Type	Mounting style 4-40 UNC	Part Number
2 X 2W2C	Threaded insert	13-001563
2 X 3W3	Threaded insert	13-001573
2 X 3W3C	Threaded insert	13-001583
2 X 5W5	Threaded insert	13-001593
2 X 8W8	Threaded insert	13-001603

No. of pos.	Mounting style 4-40 UNC	Part Number
2 X 2W2C	Threaded insert/PCB clip	13-001763
2 X 3W3	Threaded insert/PCB clip	13-001773
2 X 3W3C	Threaded insert/PCB clip	13-001783
2 X 5W5	Threaded insert/PCB clip	13-001793
2 X 8W8	Threaded insert/PCB clip	13-001803

Variation:  
socket upper –  
plug bottom

PCB clip .122" / 3.1 ± .004" / 0.10 mm hole diameter and .063" / 1.6 mm circuit board thickness