

Han B Base Surface LC 1 Lever 1 x M20

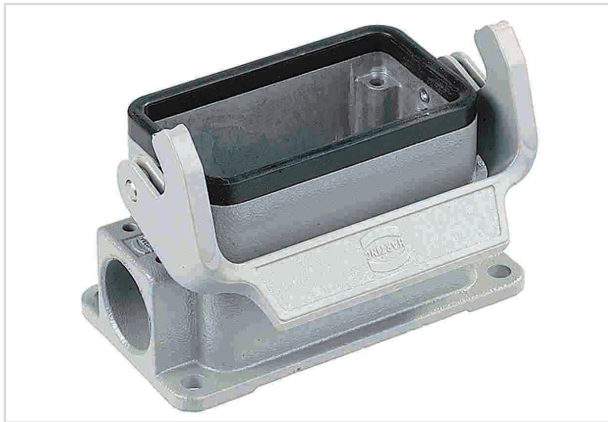


Image is for illustration purposes only. Please refer to product description.

Part number	19 30 010 1250
Specification	Han B Base Surface LC 1 Lever 1 x M20
HARTING eCatalogue	https://b2b.harting.com/19300101250

Identification

Category	Hoods/Housings
Series of hoods/housings	Han [®] B
Type of hood/housing	Surface mounted housing
Type	Low construction

Version

Locking type	Single locking lever
Han-Easy Lock [®]	Yes
Size	10 B
Version	Side entry
Cable entry	1x M20
Field of application	Standard hoods/housings for industrial connectors

Technical characteristics

Limiting temperature	-40 ... +125 °C
Degree of protection acc. to IEC 60529	IP65
Type rating acc. to UL 50 / UL 50E	4 4X 12

Material properties

Material (hood/housing)	Aluminium die-cast
Surface (hood/housing)	Powder-coated
Colour (hood/housing)	RAL 7037 (dust grey)



Pushing Performance

Material properties

Material (seal)	NBR
Material (locking)	Polycarbonate (PC) Stainless steel
Colour (locking)	RAL 7037 (dust grey)
Material flammability class acc. to UL 94 (locking levers)	V-0
RoHS	compliant
ELV status	compliant
China RoHS	e
REACH Annex XVII substances	No
REACH ANNEX XIV substances	No
REACH SVHC substances	Yes
REACH SVHC substances	Potassium 1,1,2,2,3,3,4,4,4-nonafluorobutane-1-sulphonate

Specifications and approvals

Approvals	DNV GL
UL / CSA	UL 1977 ECBT2.E235076 CSA-C22.2 No. 182.3 ECBT8.E235076
CE	Yes

Commercial data

Packaging size	1
Net weight	222.4 g
Country of origin	Germany
European customs tariff number	85389099
eCl@ss	27440202 Shell for industrial connectors