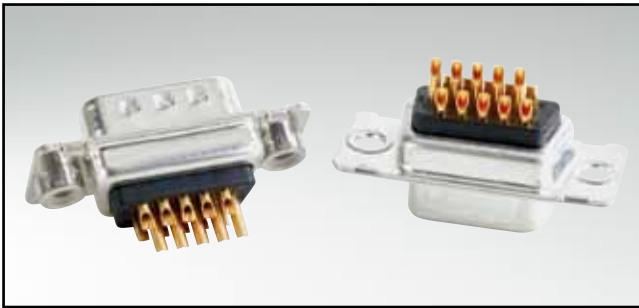


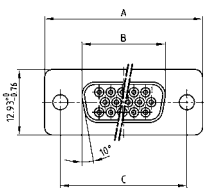
# D-SUB HIGH DENSITY

Solder cup – Precision machined contacts – For wire size AWG 22



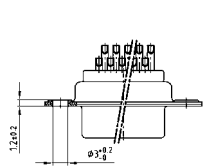
RoHS compliant – CSA listed, File No.: LR 115000-1 – UL listed, File No.: E202784

## SOCKET CONNECTOR

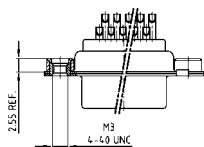


No. of pos.	A -0.76	B -0.25	C
15	31.19	16.46	25.00 +0.12
26	39.52	24.79	33.30 +0.15 / -0.10
44	53.42	38.50	47.04 +0.13
62	69.70	54.96	63.50 +0.13
78	67.31	52.55	61.10 +0.14 / -0.11

Mounting style: Through-hole



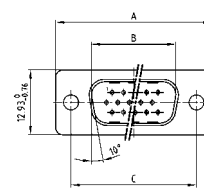
Mounting style: Threaded insert



## DESCRIPTION

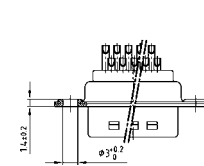
- Suitable for wire size **AWG 22**
- Mounting styles:
  - with through-hole, Ø .118" / 3 mm
  - with 4-40 UNC or M3 threaded insert
- Quality class 3 (also available in quality class 1)
- Shell: Steel tin plated (brass tin plated or stainless steel available on request)

## PLUG CONNECTOR

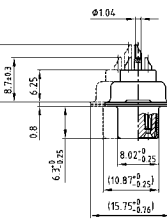
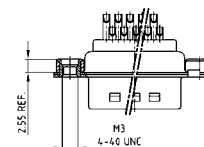


No. of pos.	A -0.76	B +0.25	C	D -0.3
15	31.19	16.79	25.00 +0.12	6.12
26	39.52	25.12	33.30 +0.15 / -0.10	6.12
44	53.42	38.84	47.04 +0.13	5.99
62	69.70	55.30	63.50 +0.13	5.99
78	67.31	52.68	61.10 +0.14 / -0.11	5.99

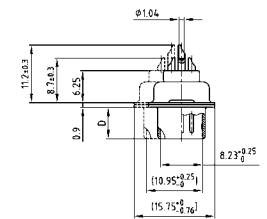
Mounting style: Through-hole



Mounting style: Threaded insert



78 pos. = Dim. in ( \_ )



78 pos. = Dim. in ( \_ )

## ORDER DATA

SOCKET CONNECTOR		
No. of pos.	Mounting style	Part Number
15	Through-hole	164 A 17009 X
26	Through-hole	164 A 17019 X
44	Through-hole	164 A 17029 X
62	Through-hole	164 A 17039 X
78	Through-hole	164 A 17049 X
15	4-40 UNC Threaded insert	164 A 17059 X
26	4-40 UNC Threaded insert	164 A 17069 X
44	4-40 UNC Threaded insert	164 A 17079 X
62	4-40 UNC Threaded insert	164 A 17089 X
78	4-40 UNC Threaded insert	164 A 17099 X
15	M3 Threaded insert	164 A 17109 X
26	M3 Threaded insert	164 A 17119 X
42	M3 Threaded insert	164 A 17129 X
62	M3 Threaded insert	164 A 17139 X
78	M3 Threaded insert	164 A 17149 X

PLUG CONNECTOR		
No. of pos.	Mounting style	Part Number
15	Through-hole	163 A 16599 X
26	Through-hole	163 A 16609 X
44	Through-hole	163 A 16619 X
62	Through-hole	163 A 16629 X
78	Through-hole	163 A 16639 X
15	4-40 UNC Threaded insert	163 A 16649 X
26	4-40 UNC Threaded insert	163 A 16659 X
44	4-40 UNC Threaded insert	163 A 16669 X
62	4-40 UNC Threaded insert	163 A 16679 X
78	4-40 UNC Threaded insert	163 A 16689 X
15	M3 Threaded insert	163 A 16699 X
26	M3 Threaded insert	163 A 16709 X
44	M3 Threaded insert	163 A 16719 X
62	M3 Threaded insert	163 A 16729 X
78	M3 Threaded insert	163 A 16739 X