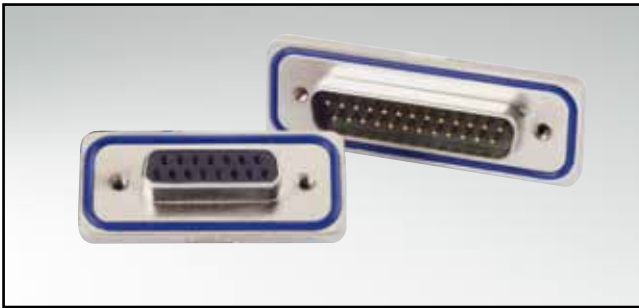


D-SUB STANDARD – IP67 SOLID BODY

Solder cup – Precision machined contacts – For wire size AWG 20

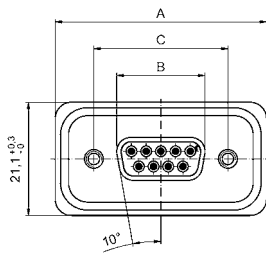


RoHS compliant

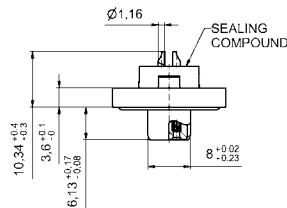
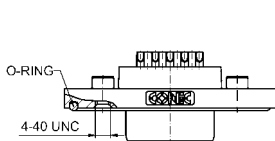
DESCRIPTION

- Suitable for wire size **AWG 20**
- Mounting style:
4-40 UNC threaded insert including hex locking bolt
- Quality class 3 (also available in quality class 1)
- One-piece zinc die-cast nickel plated shell
- IP67 for harsh environments, pressure-proof up to 1.45 PSI
- Higher protection on request

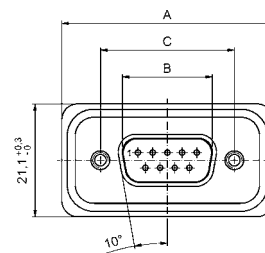
SOCKET CONNECTOR



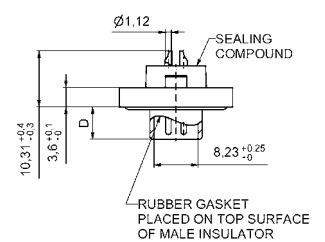
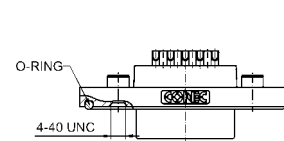
No. of pos.	A $+0.2$ -0	B $+0$ -0.25	C
09	39.40	16.46	25.00 $+0.12$ -0.13
15	47.70	24.79	33.32 $+0.13$ -0.12
25	61.40	38.50	47.04 $+0.13$
37	78.00	54.96	63.50 $+0.13$



PLUG CONNECTOR



No. of pos.	A $+0.2$ -0	B $+0$ -0.25	C	D
09	39.40	16.81	25.00 $+0.12$ -0.13	6.00 $+0.12$ -0.18
15	47.70	25.14	33.32 $+0.13$ -0.12	6.00 $+0.12$ -0.18
25	61.40	38.86	47.04 $+0.13$	5.99 $+0$ -0.3
37	78.00	55.32	63.50 $+0.13$	5.99 $+0$ -0.3



ORDER DATA

SOCKET CONNECTOR		
No. of pos.	Mounting style 4-40 UNC	Part Number
09	Threaded insert	15-000613
15	Threaded insert	15-000623
25	Threaded insert	15-000633
37	Threaded insert	15-000643

PLUG CONNECTOR		
No. of pos.	Mounting style 4-40 UNC	Part Number
09	Threaded insert	15-000573
15	Threaded insert	15-000583
25	Threaded insert	15-000593
37	Threaded insert	15-000603