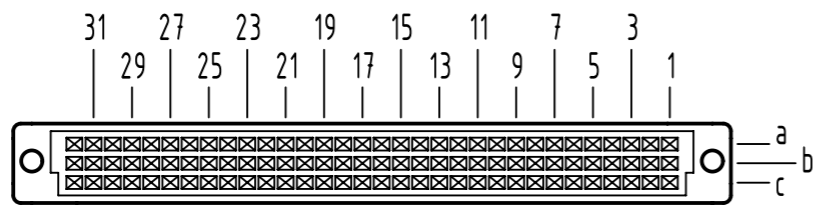


**A**  
contact arrangement



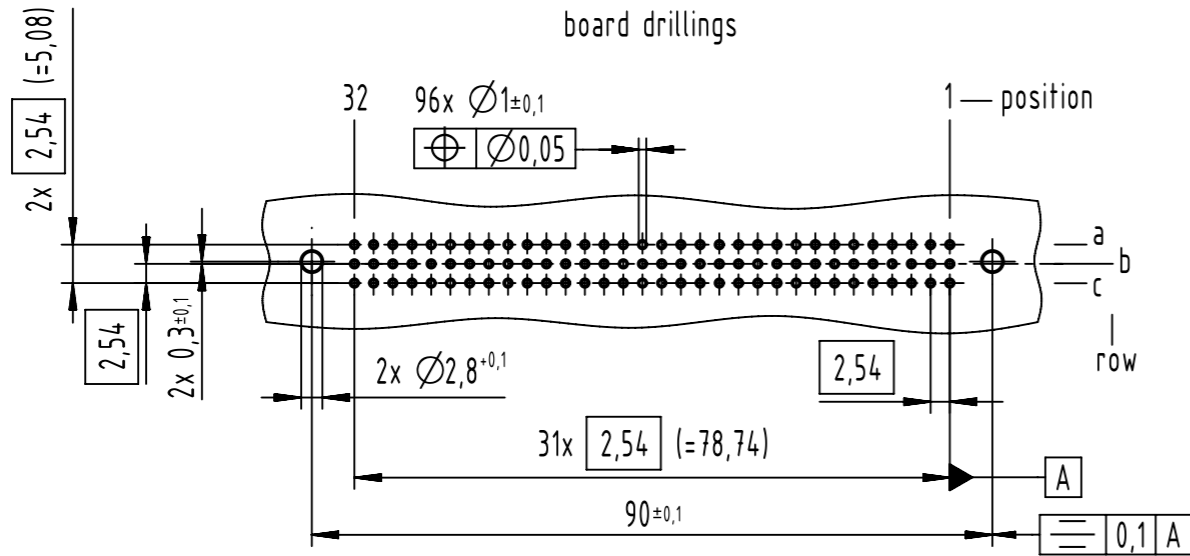
96 solder-contacts

☒ = solder-contact

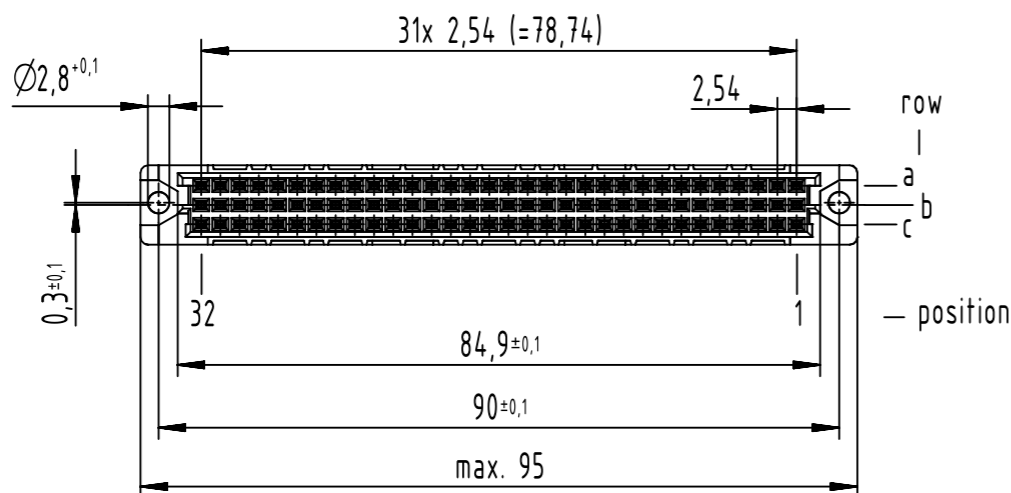
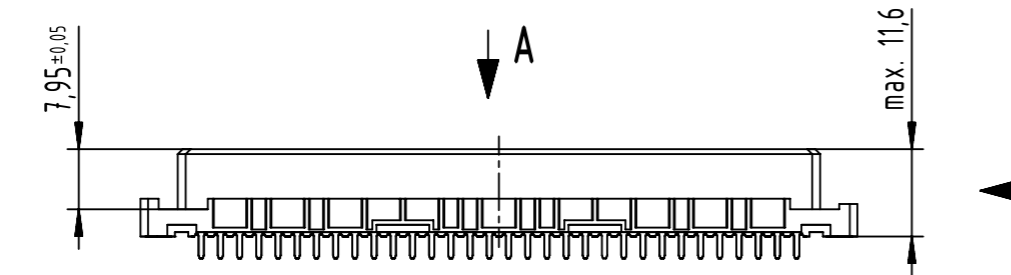
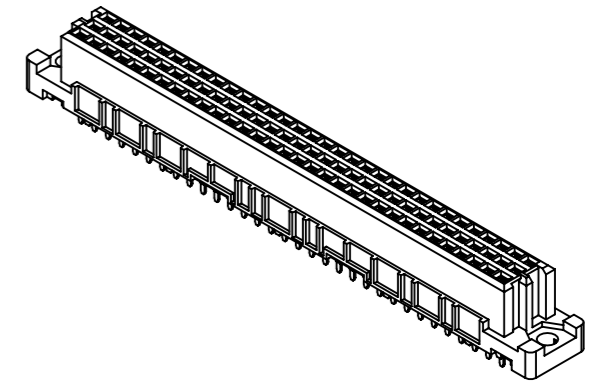
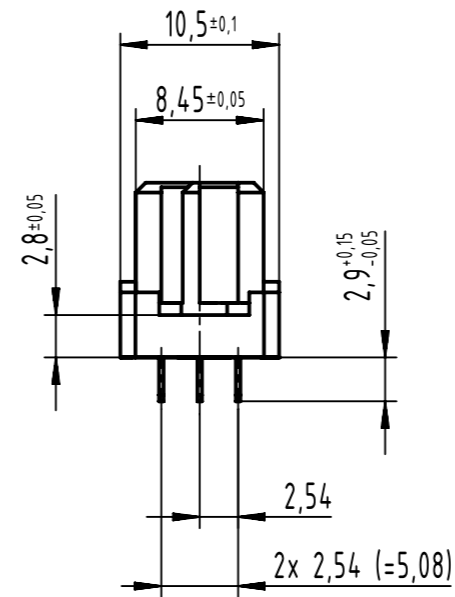
■ = kinked solder-contact

□ = position without contact

**A**  
board drillings



**B (2:1)**



09 03 296 5824 015	Au30
09 03 296 7824	3
09 03 296 6824	2
09 03 296 2824	1
part no.	performance level

further information see product data sheet

<p>All rights reserved Department EL PD</p>	<p>All Dimensions in mm Original Size DIN A3</p>	<p>Scale 1:1</p>	<p>Free size tol. IEC 60603-2</p>	Ref.	
				<p>Sub. TB 09 03 296 x824 / Mod. 36400 / 05.07.2011</p>	
<p>HARTING D-32339 Espelkamp</p>	<p>Created by STORCK</p>	<p>Inspected by LEHNERT</p>	<p>Standardisation 302077</p>	<p>Date 2021-03-12</p>	<p>State Final Release</p>
<p>Type TB</p>		<p>Number 0903296X824</p>		<p>Rev. C</p>	<p>Page 1/1</p>